

PrismPack Series

PRODUCT DESCRIPTION

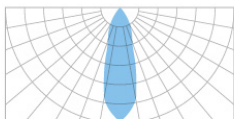
Designed to be distinctively different and taking high bay lighting to new levels of lumen output with superior light control, the new PrismPack™ combines the latest in highly efficient LEDs and redefines the standard for digital highbay lighting. The new generation PrismPack delivers solutions that can be totally tailored to specific customer applications.

PERFORMANCE SUMMARY

- Available with lumen ranges from 10,000 to 120,000 (delivered lumens).
- Three distribution options (Narrow, Medium and Wide)
- 4000K, 5000K & 6500K options available.
- CRI > 80.
- Efficacies of up to 150lpw.
- Available with integrated controls.
- System Life – 100,000 Hrs at 45°C
- System Life – 50,000 Hrs at 70°C
- Complies with EN60598
- Rated: IP65
- -25°C to 70°C*
- *Max lumen output of 60,000 at TA of 50°C to 70°C
- Warranty: 5 years

OPTICS

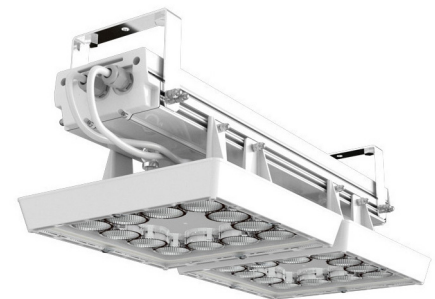
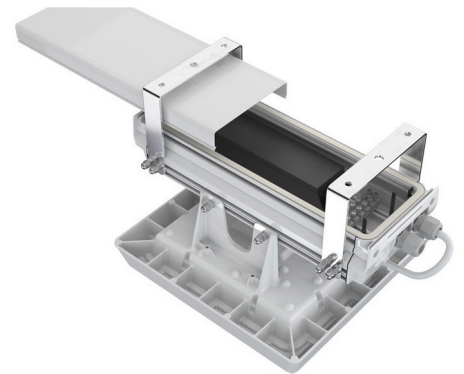
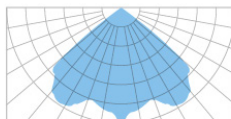
Narrow
0.5:1 SHR



Medium
1:1 SHR



Wide
1.6:1 SHR



TYPICAL LUMINAIRE PERFORMANCE

Configuration	Delivered Lumens*	LED Modules	Drivers	Power Usage (W)	Luminaire Efficacy (lpw)	Rated Life of LED Module (L70B50 @tq 40°C)
Standard Version						
PPS.LM1048.M1	9,600	1	1	64	150	100,000 hrs
PPS.LM2048.M1	19,100	1	1	138	139	100,000 hrs
PPS.LM2048.M2	19,700	2	2	131	150	100,000 hrs
PPS.LM3048.M2	29,600	2	2	204	145	100,000 hrs
PPS.LM3048.M3	29,500	3	3	197	150	100,000 hrs
PPS.LM4048.M2	38,200	2	2	276	139	100,000 hrs
PPS.LM4048.M4	39,900	4	4	266	150	100,000 hrs
PPS.LM5048.M3	49,700	3	3	348	143	100,000 hrs
PPS.LM6048.M3	57,400	3	3	414	139	100,000 hrs
PPS.LM6048.M6	59,800	6	6	399	150	100,000 hrs
PPS.LM7048.M4	69,900	4	4	494	141	100,000 hrs
PPS.LM8048.M4	76,500	4	4	551	139	100,000 hrs
PPS.LM9048.M6	89,500	6	6	617	145	100,000 hrs
PPS.LM10048.M6	100,000	6	6	701	143	100,000 hrs
PPS.LM11048.M6	109,600	6	6	781	140	100,000 hrs
PPS.LM12048.M6	114,700	6	6	827	139	100,000 hrs

System Life – 100,000 Hrs at 45°C

Rated Life of LED Module (L70B50 @tq 70°C)

High Ambient Version						
PPH.LM1048.M1	9,600	1	1	64	150	100,000 hrs
PPH.LM2048.M2	19,700	2	2	131	150	100,000 hrs
PPH.LM3048.M3	29,500	3	3	197	150	100,000 hrs
PPH.LM4048.M4	39,900	4	4	266	150	100,000 hrs
PPH.LM5048.M6	50,000	6	6	333	150	100,000 hrs
PPH.LM6048.M6	59,800	6	6	399	150	100,000 hrs

System Life – 50,000 Hrs at 70°C (High Ambient Version)

FEATURES & BENEFITS

SCALABLE SYSTEM

Lumen ranges from 10,000 to 120,000 achieved via five system sizes which deliver exceptional ROI for a multitude of applications.

Mounting options to accommodate a variety of onsite installation challenges.

EXCEPTIONAL OPTICAL PERFORMANCE

Incorporates PrismaLED technology which delivers a wholly luminous lit effect that accurately controls the output of the LEDs and reduces glare.

Optimax,TM inspired by Holophane's Superglass optical technology, maximises performance with today's digital technologies. Optimax is designed to deliver a low glare, visually comfortable, efficient lighting system.

ENHANCED LUMEN MAINTENANCE

Vertical ventilation slots in the luminaire heat-sink convect heat from the housing and creates air movement away from the glass optic to minimise dirt accumulation on the optical surface.

The glass lens ensures a low electrostatic charge which make it less susceptible to dust and dirt accumulation so improving dirt depreciation over time. This means that higher value Maintenance Factors, MF, can be used in design calculations.

FULLY CONTROLLABLE

Integrated Control options.

Compatible with HOLOSAir Lite, HOLOSAir and HOLOS Wired.

Prismpack Series

ORDERING INFORMATION

Code	Luminaire (required)										
PPS	Prismpack										
PPH	Prismpack High Ambient (Suitable for up to 70°C)										
Code	Lamp Type (required)										
.LM10X8	LED light engine producing c.10,000 lm with a nominal 4000K colour temperature										
.LM20X8	LED light engine producing c.20,000 lm with a nominal 4000K colour temperature										
.LM30X8	LED light engine producing c.30,000 lm with a nominal 4000K colour temperature										
.LM40X8	LED light engine producing c.40,000 lm with a nominal 4000K colour temperature										
.LM50X8	LED light engine producing c.50,000 lm with a nominal 4000K colour temperature										
.LM60X8	LED light engine producing c.60,000 lm with a nominal 4000K colour temperature										
.LM70X8*	LED light engine producing c.70,000 lm with a nominal 4000K colour temperature										
.LM80X8*	LED light engine producing c.80,000 lm with a nominal 4000K colour temperature										
.LM90X8*	LED light engine producing c.90,000 lm with a nominal 4000K colour temperature										
.LM100X8*	LED light engine producing c.100,000 lm with a nominal 4000K colour temperature										
.LM110X8*	LED light engine producing c.110,000 lm with a nominal 4000K colour temperature										
.LM120X8*	LED light engine producing c.120,000 lm with a nominal 4000K colour temperature										
Code	Light Engine (required)										
.M1	1 Module										
.M2	2 Module										
.M3	3 Module										
.M4	4 Module										
.M6	6 Module										
Code	Distribution (required)										
.ND	Narrow Distribution										
.MD	Medium Distribution										
.WD	Wide Distribution										
Code	Colour (required)										
.C1	Smooth White (RAL9016)										
.RAL****	RAL Colour (Customer choice)										
Code	Lens (option)										
.PGL	Prismatic Glass Lens										
Code	Dimming Outputs (option)										
.LRD	DALI enabled (any on site controls wiring should be completed in compliance with the respective control system's Installation instructions (and limitations). Holophane cannot be held responsible for the operation of its luminaires with third party control systems)										
.CL7	Programmed to deliver 70% of the initial lumens over the life of the luminaire										
.CL8	Programmed to deliver 80% of the initial lumens over the life of the luminaire										
.CL9	Programmed to deliver 90% of the initial lumens over the life of the luminaire										
Code	Emergency (option)										
.VDC	Luminaire supplied with internal DC fuse to accept 176-275VDC. Luminaire will dim to 15%.										
.EM1*	Self-contained (self-test) 1hr maintained emergency battery and inverter - c.1000 lumens										
.EM3*	Self-contained (self-test) 3hr maintained emergency battery and inverter - c.1000 lumens										
Code	Controls										
.PH0	Integrated PIR, suitable up to 16m. Switches off after 10 minutes of inactivity - switching-only functionality. Remotely re-programmable with accessory HEL.PRG (purchased separately).										
.PH1	Integrated PIR, suitable up to 16m. Dims to 30% after 10 minutes of inactivity - switches off after further 10 minutes. Remotely re-programmable with accessory HEL.PRG (purchased separately).										
.WIH	Integrated wireless node, supports grouping, suitable up to 16m - includes PIR & photocell (Requires SER.COM.DAY or SER.COM.NIGHT commissioning)										
.TZ02*	Complete with 4-Pin Zhaga Socket - 'Bottom' (suitable node/presence detector supplied by others) with weather proof locking top†										
.TZP*	Complete with 4-Pin Zhaga Socket - 'Bottom' with a PIR (attached) for 360°, aisle and end of aisle. From 3 to 13 metres mounting. fitted										
Code	Guard										
.WG	Wire guard										
Code	Fixing Method										
.CA	Safety Chain Attachment (chain not included)										
Code	Enclosure (option)										
.SF	Silicon free*										
PPS	.LM10X8	.1M	.ND	.C1	.PGL	.LRD	.VDC	.WI	.WG	.CA	SF

Replace X with
4 for 4000K,
5 for 5000K and
6 for 6500K



* Not available with PPH. † Not available with .LRD

Note: Luminaire will always be supplied with a universal bracket that allows for surface mounting or suspension mounting (suspension kits available as accessory item). Supplied with 3m flying lead (5-core or 6-core if emergency).

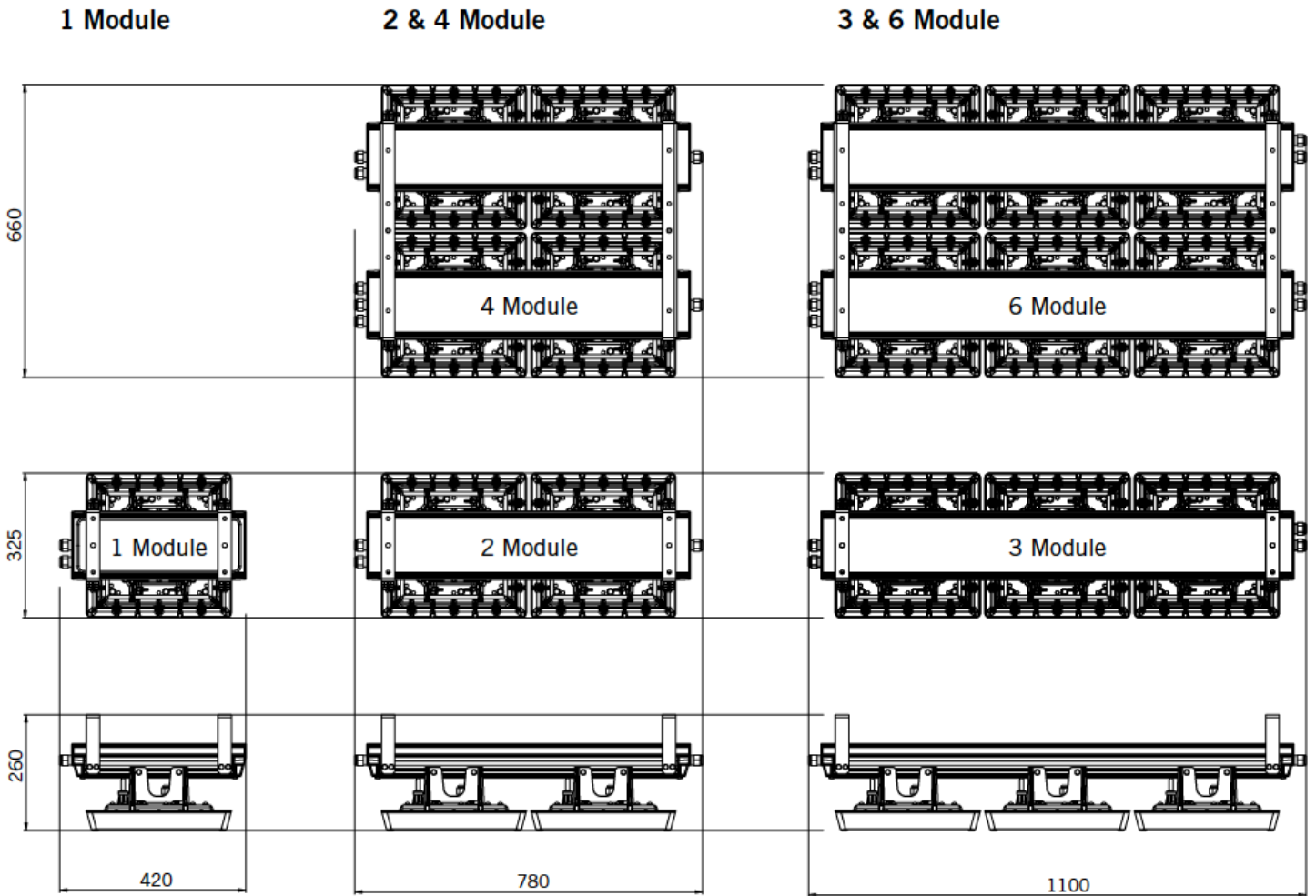
Lumen data is considered to be representative of the configuration shown, and may vary, with a tolerance on flux of +/- 7% (typical of LED manufacturer's data) and luminaire power of +/- 5%.

Accessories

- PPS.SUS Suspension kit (1m) - includes 2 x suspension wire, fixing kit and anti rotation tether for single point suspension
- HEL.PRG Remote programming device. Suitable for luminaires with options PH0/PL1/PH1 PIR devices. Programming range up to 20m.

Prismpack Series

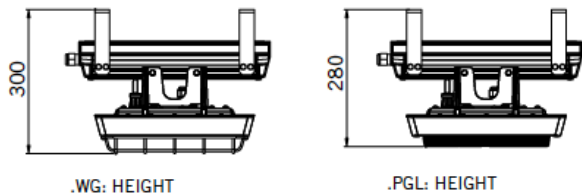
DIMENSIONS



Note: Mechanical dimensions only. Space taken up by led-module to electrical compartment cable not included. Please allow an extra 60mm in each side for cable. Please allow an extra 150mm for side mounted sensor.



dimensions in mm



Weight kg*

1 Module	7.1
2 Module	13.0
3 Module	19.1
4 Module	27.7
6 Module	39.8