



**DENVER™**  
elite system

---

**bollard**



**denver™ elite bollard**

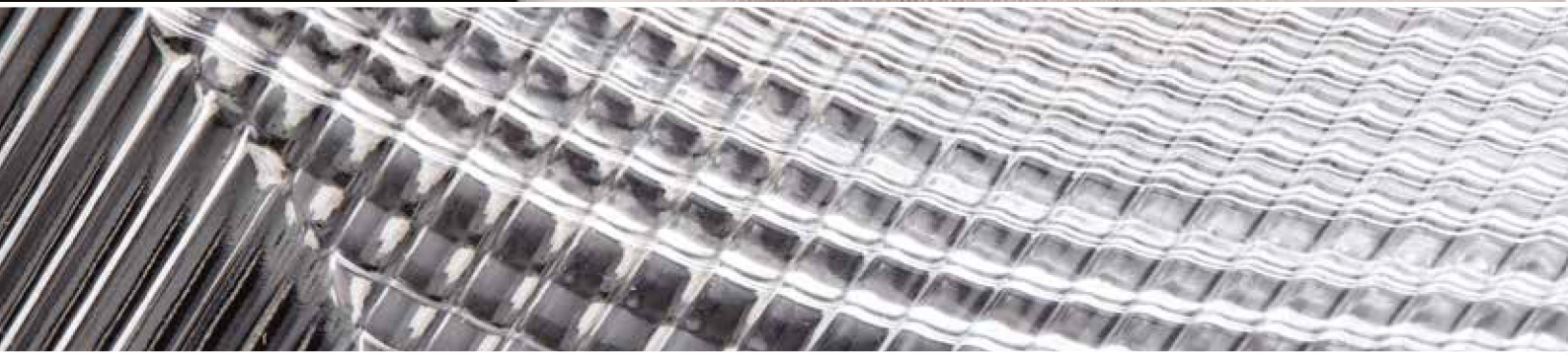
Patent Pending  
REGISTERED EUROPEAN DESIGN



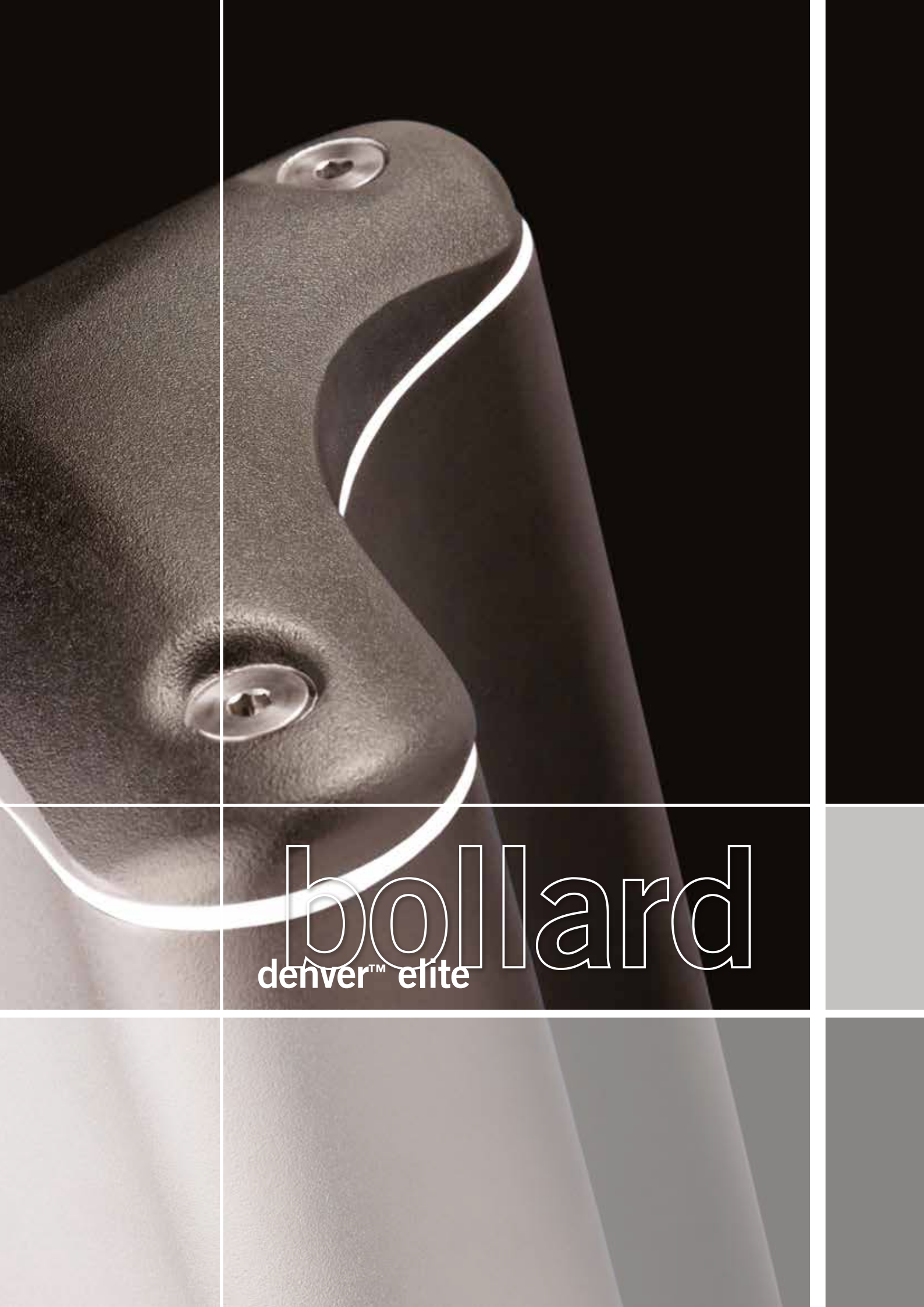
DENVER™  
elite system

---

**bollard**



 **prismaled**™



**bollard**  
denver™ elite

DENVER™  
elite system

---

**bollard**



REGISTERED EUROPEAN DESIGN





Patent Pending

The **Denver™ Elite bollard** combines a palette of design variables, which include aesthetic appeal, quality, durability and performance.

The Denver™ Elite bollard is a modern aesthetic design that incorporate LED technology. Despite its stylised design the prismatic optical performance of the bollard is still industry leading offering a choice of distributions. The trilobe design profile with patent pending decorative light line membrane is a progression of everything we've learnt from our existing bollard whilst taking new technologies and environmental issues into consideration.



The product has been designed to incorporate a heat barrier that enables a 'cool to touch' feature and ensures that the product adheres to BS ENISO 13732-1. The membrane is mounted within the cap itself ensuring that it meets the 'cool to touch' standard at all times. In addition the barrier allows us to create a unique 'light line'. Giving you a safe and stylised product in one.



## specification

The luminaire shall consist of an extruded aluminium body, housing integral control gear for LED technology. The optical arrangement shall consist of a prismatic lens or prismatic lens with louvre. The top tri-lobe gasket enabling the bollard to achieve EN60598-1 (patent pending) is secured between the top cap and body via three stainless steel nuts. Root mounted option available. The luminaire complies to EN60598 with a range of options and accessories.

## lamp types

1,000 or 2,000 lumen package LED

## approvals

- > BS EN60598-1
- > BS EN55015
- > BS EN61000-3-2
- > BS EN61000-3-3
- > BS ENISO13732
- > BS EN62031
- > BS EN62384
- > BS EN62560

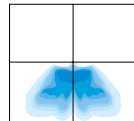
## rating

IP65 / IK09

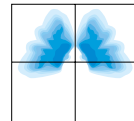


## light distribution

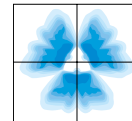
Symmetric single lens



Bisymmetric double lens



Symmetric triple lens



## features and benefits

### Contemporary styling

- > Unique 'registered' tri-lobe design giving an aesthetic appeal that complements today's modern architecture

### High Quality Construction

- > Durable and robust design via three securing rods and nuts
- > Fully weather sealed

### Single, Double or Triple lens

- > Unique lens layout that is suitable for a wide range of applications

### Louvre with Prismatic Lens

- > Gives the bollard additional upright cut-off. A first in any bollard

### Decorative 'Patent Pending' Light Line

- > Gives the product a unique style
- > Cool to touch. Product complies to BS ENISO 13732-1

### Available in 2 heights

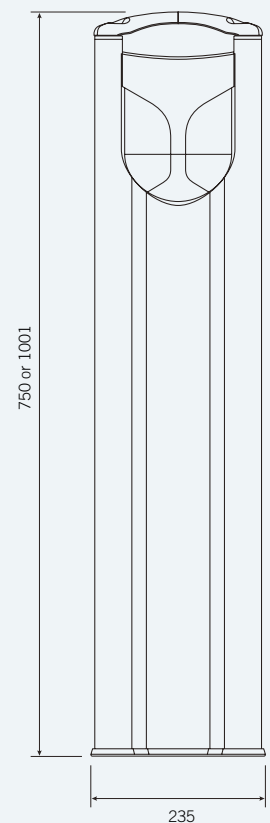
- > Flexibility
- > Different visual effects

### Vandal resistant

- > Robust styling and build process.
- > Patented tri-lobe design enables stability



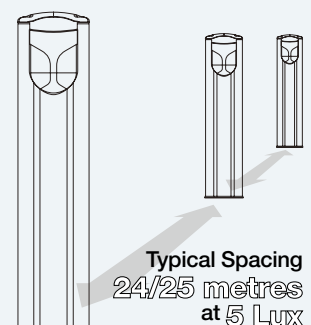
dimensions in mm



## weight & thermal data (1m / 0.75m version)

Lamp Type	Weight (kg)	Min. Operating Temperature (°C)	Max. Ambient Temperature (°C)	Temp of Top(°C)
.L014	10.5 / 9	TBC	TBC / TBC	TBC / TBC
.L024	10.5 / 9	TBC	TBC / TBC	TBC / TBC

\*allow 0.5kg for .EM = emergency version on compact fluorescent lamp types



## ordering details

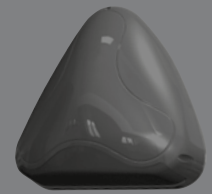
Code											
DEB	Denver™ Elite Bollard										
	<b>Code</b>	<b>Lamp Type</b> (required)									
	.L014	LED light engine producing c.1,000 lm with a nominal 4000K									
	.L024	LED light engine producing c.2,000 lm with a nominal 4000K <i>(3000K also available - contact ADLT for more)</i>									
	<b>Code</b>	<b>Distribution</b>									
	.PAY	Asymmetrical Distribution									
	<b>Code</b>	<b>Optical Enclosure</b>									
	.SU	Single Sided Asymmetric Distribution									
	.DO	Double Sided Bisymmetric Distribution									
	.TR	Triple Sided Symmetric Distribution									
	<b>Code</b>	<b>Head / Height</b>									
	.H75	750mm High									
	.H100	1000mm High									
	<b>Code</b>	<b>Colour</b> (required)									
	.C1	Smooth White (RAL 9016)									
	.C4	Smooth Graphite (RAL 7011)									
	.C6	Smooth Grey (RAL 7035)									
	.C7	Textured Black (RAL 9005)									
	.C9	Metallic Silver (RAL 9006)									
	.	RAL**** RAL Colour (customer choice)									
	<b>Code</b>	<b>Paint Finish</b>									
	.C	Enhanced Paint Finish									
	<b>Code</b>	<b>Cut Outs</b>									
	.MCB	Mini circuit breaker									
	<b>Code</b>	<b>Auxiliary Circuits</b>									
	.TW	Through Wiring option									
	<b>Code</b>	<b>Emergency</b>									
	.ME1	3hr maintained emergency IP65									
	<b>Code</b>	<b>Screws</b>									
	.V1	Vandal-resistant screws									
<b>Example</b>	DEB	.26PL4	.LYA	.DO	.H75	.C9	.C	.MCB	.TW	.ME1	.V1



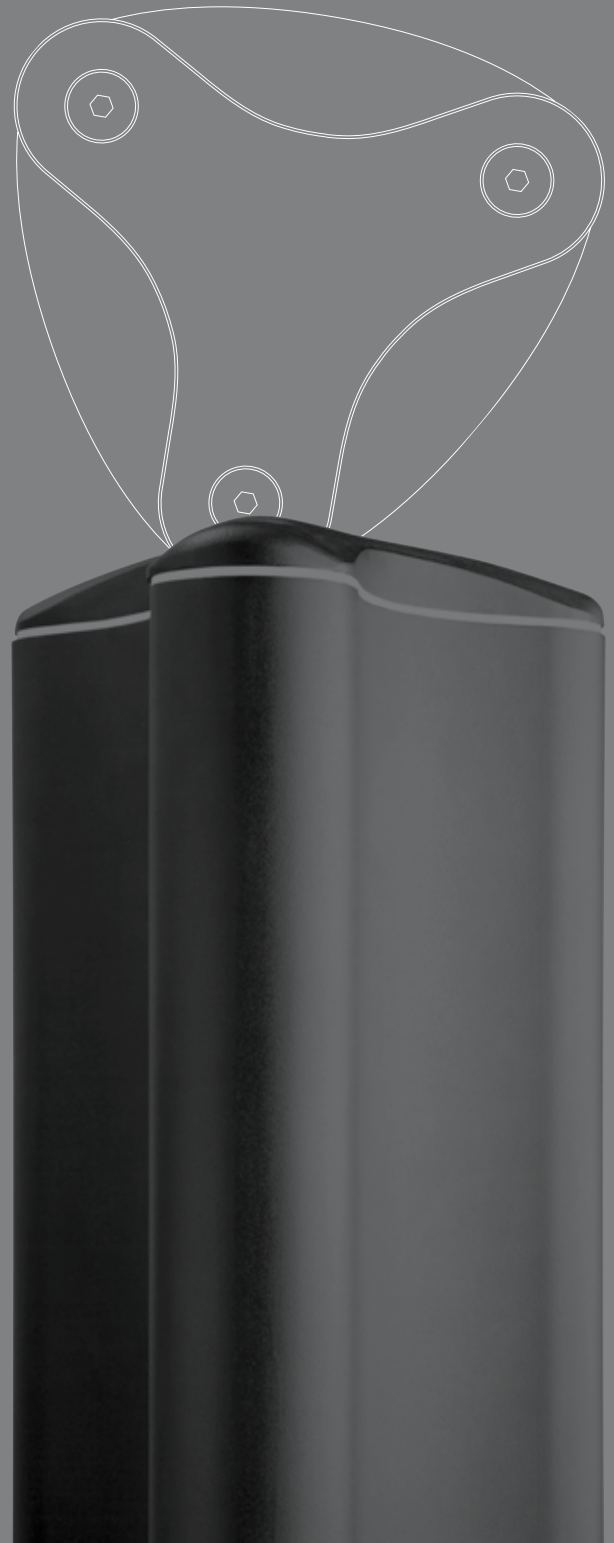
Lumen data is considered to be representative of the configuration shown, and may vary, with a tolerance on flux of +/- 7% (typical of LED manufacturers data) and luminaire power of +/- 5%.

## luminaire accessories

Code	
<b>DBL.FT</b>	Set of 3 Bolts M10 x 100mm for Flange Base Fixing
<b>DEB.ROOT</b>	Root Mounting Spike to fit Flange Base Denver™ Elite Bollard
<b>DBL.VK</b>	Vandal key for Denver™ Elite Bollard



denver™ elite range



DENVER™  
elite system

---

bollard



  
**HOLOPHANE**®  
An *Acuity* Brands Company