

XSP Series - AEMO Approved*



CREE LIGHTING

XSP1™ LED Street/Area Luminaire - Single Module

Product Description

Designed from the ground up as a totally optimized LED street and area lighting system, the XSP High Output Series delivers incredible efficiency without sacrificing application performance. Beyond substantial energy savings and reduced maintenance, Cree achieves greater optical control with our NanoOptic® Precision Delivery Grid™ optic when compared to traditional cobra head luminaires. The XSP High Output Series is the better alternative for traditional street and area lighting with quick payback and improved performance.

Applications: Roadway, parking lots, walkways and general area spaces.

Performance Summary

NanoOptic® Precision Delivery Grid™ optic

Efficacy: Up to 155 lm/W

Initial Colour consistency: 4 MacAdam steps

Limited Warranty: Class 1 — 10 years on luminaire / 10 years on Colorfast DeltaGuard® finish



***NOTE:** This spec sheet has been modified to display only variations approved by and listed on the National Electricity Market Load Tables For Unmetered Connection Points, as published by the Australian Energy Market Operator (AEMO). Contact Advanced Lighting Technologies for more information.

Ordering Information

Ex.:XSP-E-02-2LG-E-30K-+-24-SV-FX-S-00

XSP	- E	- 02	- 2LG	- E	- 30K	- +	- 24	- SV	- FX	- S	- 00
Product	Version	Mounting	Optic	Input Power	CCT	Insulation Class	Voltage	Finish	Options	Variant	Cable length
XSP	- E	- 02 horiz/vert tenon 60mm OD	- 2LG Type II long	- E 94W	- 30K 3000K	- + Class 1	- 24 220-240V	- SV Silver	- Input Power E: FX Fixed Input Power	- S Standard	- 00 Standard (w/o cable)
		03 horiz/vert tenon 76mm OD	275 Type II short 0.75		40K 4000K			BK Black		SF Standard +Fuse	01 Exit cable 30cm
			210 Type II short 1,0								03 Exit cable 3m
			2SH Type II short								06 Exit cable 6m
			3SH Type III short								10 Exit cable 10m
			3ME Type III medium								12 Exit cable 12m
			4ME Type IV medium								

Accessory Information

ADAPTER

KIT-XSP-AP60-34-G0

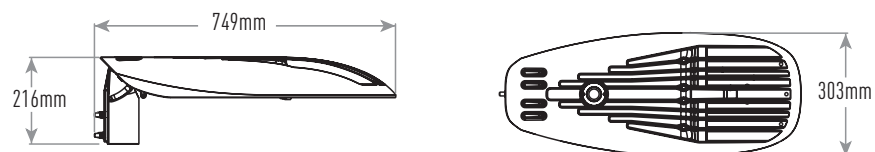
Fitter kit to mount to 34mm tenon

KIT-XSP-AP60-42-G0

Fitter kit to mount to 42mm tenon

KIT-XSP-AP60-48-G0

Fitter kit to mount to 48mm tenon



XSP Series - AEMO Approved*

XSP1™ LED Street/Area Luminaire - Single Module



FEATURES

- Full cut-off optics (NanoOptic® Precision Delivery Grid™)
 - Lumen output: 10000 – 11500lm
 - Efficacy: Up to 155lm/W
 - CCT: 3000K, 4000K.
 - CRI Standard min.70, CRI 80 @3000K (on request for MOQ)
 - Initial Colour Consistency: 4 MacAdam steps
 - Input Voltage: 220-240V
 - Driver equipped with with over-temperature protection to preserve optimal working conditions
 - Power factor: Up to > 0.99 at full load
 - Lifetime: L80F10 Up to >190Khrs Ta=25°C (According to IEC/EN 62717 and IESNA TM-21)
- Surge protection: 10kV CM/DM surge immunity according to EN 61000-4-5 and EN 61547 (Class I SPD equipped with LED signal)
- Fuse option available
 - Operative temperature: -40°C up to +50°C
 - Insulation class: Class I
 - Enclosure rated IP66 per IEC 60529
 - Impact resistance IK08
 - Cable type H07RN-F (Cable length Up to 12mt)
 - Tool-less entry
 - Removable tray
 - Control options: Fixed
 - LED Board equipped with integral ESD and Surge protection
 - Fixture assembled without the use of glues, totally dismountable and recyclable.

CONSTRUCTION AND MATERIALS

- Die cast, low copper <0,1%, aluminum alloy housing for long weathering and reliability
- Luminaire is designed to mount directly to 76mm or 60mm outer dimension tenons or poles and can be tilted +/- 20°, in steps of 5°
- Luminaire fitter 02 can mount to 60mm OD tenons and fitter 03 to 76mm
- Exclusive Colorfast DeltaGuard® finish features an E-Coat epoxy primer with an ultra-durable powder topcoat, providing excellent resistance to corrosion, ultraviolet degradation and abrasion.

WARRANTY AND CERTIFICATIONS

- Limited Warranty¹: Class 1 — 10 years on Colorfast DeltaGuard® finish / 10 years on luminaire
- CE mark / CB mark / ENEC mark / RoHs compliant
- Risk group exempt in accordance with Standard CEI EN 62471 for photobiological safety (Tested IEC/TR62778)
- Luminaire and finish endurance tested to withstand 5,000 hours of elevated ambient salt fog conditions as defined in ASTM Standard B 117
- Compliant to: EN 60598-1; EN 60598-2-3

ELECTRICAL DATA*

Input Power Designator	System Watts 220-240V	Total Current	Power Factor
		@230V, 50Hz	
E	94	0,42 A	0,99

* Electrical data at 25°C (77°F)

ELECTRICAL DATA AS PER TESTING FOR AEMO

Input Power Designator	System Watts @ 250V	Total Current @ 250V, 50Hz	Power Factor
E	95.7W	0.39A	0.98

RECOMMENDED CREE® OUTDOOR LUMINAIRE LUMEN MAINTENANCE FACTORS (LMF)1

Ambient	Input Power Designator	Initial LMF	25K hr Projected ² LMF	50K hr Projected ² LMF	75K hr Calculated ³ LMF	100K hr Calculated ³ LMF
5°C	E	1.04	0.97	0.95	0.92	0.89
10°C	E	1.03	0.97	0.95	0.92	0.89
15°C	E	1.02	0.97	0.94	0.91	0.89
20°C	E	1.01	0.96	0.93	0.90	0.87
25°C	E	1.00	0.96	0.92	0.88	0.85

¹ Lumen maintenance values at 25°C (77°F) are calculated per TM-21 based on LM-80 data and in-situ luminaire testing
² In accordance with IESNA TM-21-11, Projected Values represent interpolated value based on time durations that are within six times (6X) the IESNA LM-80-08 total test duration (in hours) for the device under testing (DUT) i.e. the packaged LED chip
³ According with TM-21 the projected value can be just up to 6x time the test time

WEIGHT AND MAXIMUM WIND AREA

Weight	Lateral Surface Wind Exposed
10.5 kg	0.090m ²

XSP Series - AEMO Approved*

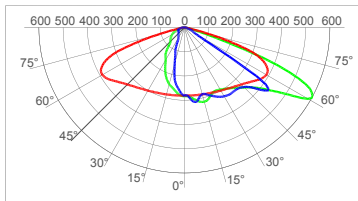
XSP1™ LED Street/Area Luminaire - Single Module



Photometry

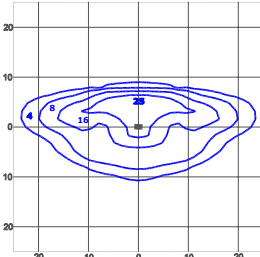
All published luminaire photometric testing performed to IESNA LM-79-08 standards by an external laboratory. To obtain an IES file specific to your project consult: www.creelighting-europe.com

2LG - Type II Long



cd/klm
 C0 - C180 C90 - C270 C35 - C215

Test Report #: PL11703-033

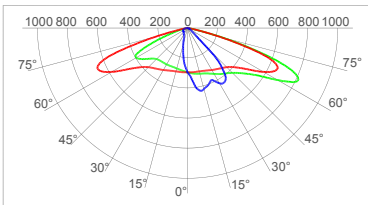


lux
 XSPE022LGE40K
 Mounting Height: 8m

LUMEN OUTPUT - 2LG (Type II Long)		
Input Power Designator	3000K	4000K
	E	10434

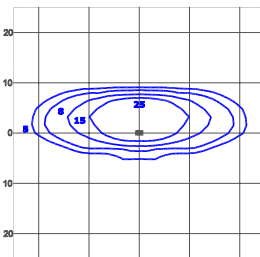
* Initial delivered lumens at 25°C (77°F). Actual production yield may vary between -4 and +10% of initial delivered lumens

275 - Type II Short 0.75



cd/klm
 C0 - C180 C90 - C270 C7.5 - C187.5

Test Report #: PL11703-028

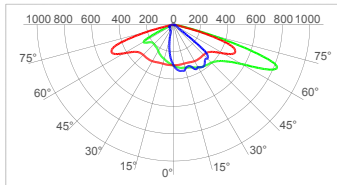


lux
 XSPE02275E40K
 Mounting Height: 8m

LUMEN OUTPUT - 275 (Type II Short 0.75)		
Input Power Designator	3000K	4000K
	E	10697

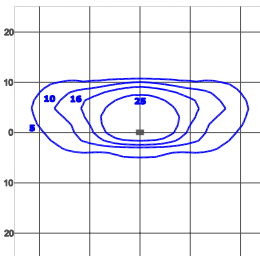
* Initial delivered lumens at 25°C (77°F). Actual production yield may vary between -4 and +10% of initial delivered lumens

210 - Type II Short 1.0



cd/klm
 C0 - C180 C90 - C270 C15 - C195

Test Report #: PL11703-010

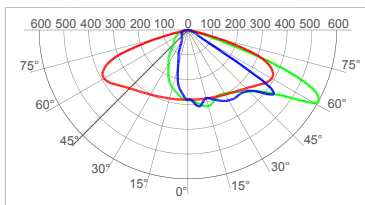


lux
 XSPE02210E40K
 Mounting Height: 8m

LUMEN OUTPUT - 210 (Type II Short 1.0)		
Input Power Designator	3000K	4000K
	E	10800

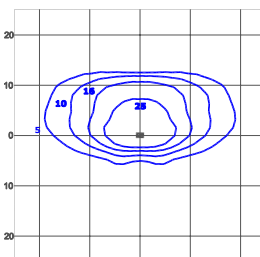
* Initial delivered lumens at 25°C (77°F). Actual production yield may vary between -4 and +10% of initial delivered lumens

2SH - Type II Short



cd/klm
 C0 - C180 C90 - C270 C35 - C215

Test Report #: PL11703-029



lux
 XSPE022SHE40K
 Mounting Height: 8m

LUMEN OUTPUT - 2SH (Type II Short)		
Input Power Designator	3000K	4000K
	E	10873

* Initial delivered lumens at 25°C (77°F). Actual production yield may vary between -4 and +10% of initial delivered lumens

XSP Series - AEMO Approved*

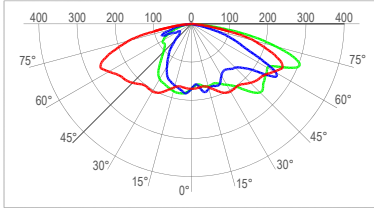
XSP1™ LED Street/Area Luminaire - Single Module



Photometry

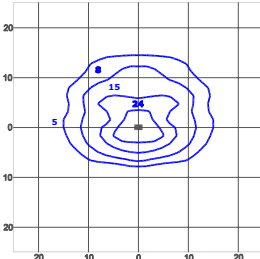
All published luminaire photometric testing performed to IESNA LM-79-08 standards by an external laboratory. To obtain an IES file specific to your project consult: www.creelighting-europe.com

3SH - Type III Short



cd/klm
 C0 - C180 C90 - C270 C45 - C215

Test Report #: PL11703-030

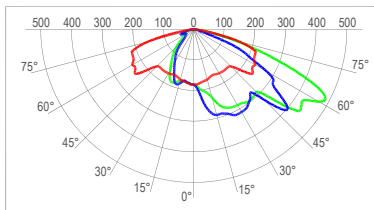


lux
 XSPE023SHE40K
 Mounting Height: 8m

LUMEN OUTPUT - 3SH (Type III Short)		
Input Power Designator	3000K	4000K
	E	Initial Delivered Lumens* 9934

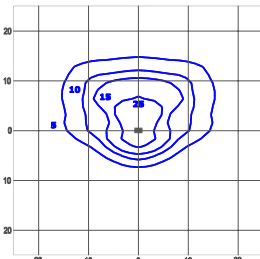
* Initial delivered lumens at 25°C (77°F). Actual production yield may vary between -4 and +10% of initial delivered lumens

3ME - Type II Medium



cd/klm
 C0 - C180 C90 - C270 C45 - C225

Test Report #: PL11703-031

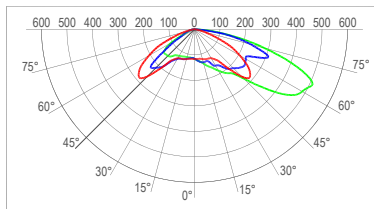


lux
 XSPE023MEE40K
 Mounting Height: 8m

LUMEN OUTPUT - 3ME (Type II Medium)		
Input Power Designator	3000K	4000K
	E	Initial Delivered Lumens* 10442

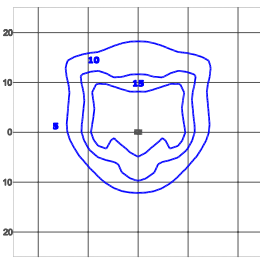
* Initial delivered lumens at 25°C (77°F). Actual production yield may vary between -4 and +10% of initial delivered lumens

4ME - Type IV Medium



cd/klm
 C0 - C180 C90 - C270 C45 - C225

Test Report #: PL11703-032



lux
 XSPE024MEE40K
 Mounting Height: 8m

LUMEN OUTPUT - 4ME (Type IV Medium)		
Input Power Designator	3000K	4000K
	E	Initial Delivered Lumens* 10817

* Initial delivered lumens at 25°C (77°F). Actual production yield may vary between -4 and +10% of initial delivered lumens

© 2019 Cree Lightin. For informational purposes only. Content is subject to change. Patent www.creelighting.com/patents. Cree® and the Cree logo are registered trademarks and the Cree SmartCast Technology Logo is a trademark of Cree, Inc.

Advanced Lighting Technologies Australia Inc
 Advanced Lighting Technologies New Zealand Ltd
 Advanced Lighting Technologies Asia Pte Ltd

Australia
 New Zealand
 Singapore

+61 3 9800 5600
 +64 09 415 6332
 +65 6844 2338

www.adlt.com.au
www.adlt.co.nz
www.adlt.com.sg

Rev. Date: 01 October 2020