

XSP High Output Series

XSP1™ High Output LED Street/Area Luminaire - Single Module



CREE LIGHTING

Product Description

Designed from the ground up as a totally optimized LED street and area lighting system, the XSP High Output Series delivers incredible efficiency without sacrificing application performance. Beyond substantial energy savings and reduced maintenance, Cree achieves greater optical control with our NanoOptic® Precision Delivery Grid™ optic when compared to traditional cobra head luminaires. The XSP High Output Series is the better alternative for traditional street and area lighting with quick payback and improved performance.

Applications: Roadway, parking lots, walkways and general area spaces.

Performance Summary

NanoOptic® Precision Delivery Grid™ optic

Efficacy: Up to 155 lm/W

Initial Colour consistency: 4 MacAdam steps

Limited Warranty: Class 1 — 10 years on luminaire / 10 years on Colorfast DeltaGuard® finish
Class 2 — 5 years on luminaire / 10 years on Colorfast DeltaGuard® finish

Extended warranty (up to 10 years) available for Class II luminaires on approved projects. Contact ADLT for further information.



Ex.:XSP-E-02-2LG-E-30K-+-24-SV-Q-S-00+FX01EE1-0009

Ordering Information

XSP	- E	- 02	- 2LG	- E	- 30K	- +	- 24	- SV	- FX	- S	- 00
Product	Version	Mounting	Optic	Input Power	CCT	Insulation Class	Voltage	Finish	Options	Variant	Cable length
XSP	E	02 horiz/vert tenon 60mm OD	2LG Type II long	E 94W	30K 3000K	+ Class 1	24 220-240V	SV Silver	FX Fixed Input Power	S Standard	00 Standard (w/o cable)
		03 horiz/vert tenon 76mm OD	275 Type II short 0.75	H 67W	40K 4000K	^ Class 2		BK Black	LS Lumistep	N Nema 7pin	01 Exit cable 30cm
			210 Type II short 1,0	L 67W	57K 5700K			BZ Bronze	FX Fixed Input Power	SF Standard +Fuse	03 Exit cable 3m
			2SH Type II short					SB Silver Bronze	LS Lumistep	NF Nema +Fuse	06 Exit cable 6m
			3SH Type III short					WH White	DL DALI		
			3ME Type III medium						DY Dynadimmer		
			4ME Type IV medium						CL Constant lumen		
									Input Power L:	Input Power L:	10 Exit cable 10m
									DYF Dynadimmer	Z Zhaga Socket	12 Exit cable 12m
									SR Sensor Ready	ZF Zhaga Socket +Fuse	

Accessory Information

ADAPTER

KIT-XSP-AP60-34-G0

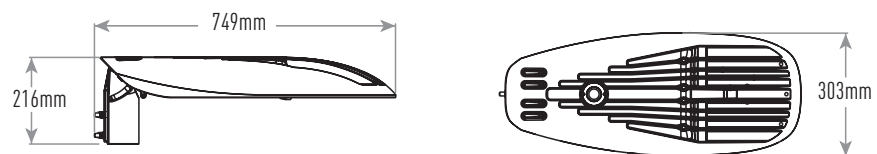
Fitter kit to mount to 34mm tenon

KIT-XSP-AP60-42-G0

Fitter kit to mount to 42mm tenon

KIT-XSP-AP60-48-G0

Fitter kit to mount to 48mm tenon



XSP High Output Series

XSP1™ High Output LED Street/Area Luminaire - Single Module



FEATURES

- Full cut-off optics (NanoOptic® Precision Delivery Grid™)
- Lumen output: 4000 – 11500lm
- Efficacy: Up to 155lm/W
- CCT: 3000K, 4000K, 5700K
- CRI Standard min.70
- Initial Colour Consistency: 4 MacAdam steps
- Input Voltage: 220-240V
- Driver equipped with with over-temperature protection to preserve optimal working conditions
- Power factor: Up to > 0.99 at full load
- Lifetime: L80F10 Up to >190Khrs Ta=25°C (According to IEC/EN 62717 and IESNA TM-21)
- Surge protection: 10kV CM/DM surge immunity according to EN 61000-4-5 and EN 61547 (Class I SPD equipped with LED signal)
- Fuse option available
- Operative temperature: -40°C up to +50°C
- Insulation class: Class I – Class II
- Enclosure rated IP66 per IEC 60529
- Impact resistance IK08
- Cable type H07RN-F (Cable length Up to 12mt)
- Tool-less entry
- Removable tray
- Control options: DALI, Lumistep, Dynadimmer, Constant Lumen Output, Sensor Ready
- Zhaga option is available on request
- Nema socket option available
- LED Board equipped with integral ESD and Surge protection
- Fixture assembled without the use of glues, totally dismountable and recyclable.

CONSTRUCTION AND MATERIALS

- Die-cast aluminium body with lower copper content
- Luminaire is designed to mount directly to 76mm or 60mm outer dimension tenons or poles and can be tilted +/- 20°, in steps of 5°
- Luminaire fitter 02 can mount to 60mm OD tenons and fitter 03 to 76mm
- Exclusive Colorfast DeltaGuard® finish features an E-Coat epoxy primer with an ultra-durable powder topcoat, providing excellent resistance to corrosion, ultraviolet degradation and abrasion.

WARRANTY AND CERTIFICATIONS

- Limited Warranty¹: Class 1 — 10 years on Colorfast DeltaGuard® finish / 10 years on luminaire
- Class 2 — 10 years on Colorfast DeltaGuard® finish / 5 years on luminaire
- CE mark / CB mark / ENEC mark / RoHs compliant
- UMSUG Charge code (UK Power performance test)
- Risk group exempt
- Luminaire and finish endurance tested to withstand 5,000 hours of elevated ambient salt fog conditions as defined in ASTM Standard B 117
- Compliant to: EN 60598-1; EN 60598-2-3
- UMSUG Charge code (UK Power performance test)

ELECTRICAL DATA*

Input Power Designator	System Watts 220-240V	Total Current	Power Factor
		@230V, 50Hz	
E	94 W	0,42 A	0,99
H / L	67 W	0,30 A	0,97

* Electrical data at 25°C (77°F)

RECOMMENDED CREE® OUTDOOR LUMINAIRE LUMEN MAINTENANCE FACTORS (LMF1)

Ambient	Input Power Designator	Initial LMF	25K hr Projected ² LMF	50K hr Projected ² LMF	75K hr Calculated ³ LMF	100K hr Calculated ³ LMF
5°C	E	1.04	0.97	0.95	0.92	0.89
	H / L	1.04	0.99	0.97	0.94	0.91
10°C	E	1.03	0.97	0.95	0.92	0.89
	H / L	1.04	0.98	0.96	0.93	0.90
15°C	E	1.02	0.97	0.94	0.91	0.89
	H / L	1.04	0.98	0.96	0.93	0.90
20°C	E	1.01	0.96	0.93	0.90	0.87
	H / L	1.04	0.97	0.95	0.92	0.89
25°C	E	1.00	0.96	0.92	0.88	0.85
	H / L	1.04	0.97	0.95	0.92	0.89

¹ Lumen maintenance values at 25°C (77°F) are calculated per TM-21 based on LM-80 data and in-situ luminaire testing

² In accordance with IESNA TM-21-11, Projected Values represent interpolated value based on time durations that are within six times (6X) the IESNA LM-80-08 total test duration (in hours) for the device under testing (DUT) i.e. the packaged LED chip)

³ According with TM-21 the projected value can be just up to 6x time the test time

WEIGHT AND MAXIMUM WIND AREA

Weight	Lateral Surface Wind Exposed
10.5 kg	0.090m ²

AVAILABLE NEMA OPTIONS

DL-N	Nema 7 pin with DALI	(on-off + Dim)
DY-N	Nema 7 pin with Dynadimmer	(on-off)
CL-N	Nema 7 pin with CLO	(on-off)
DC-N	Nema 7 pin with Dynadimmer and CLO	(on-off)

- on-off: Nema allows for on-off control only

- on-off + Dim: Nema allows for on-off and dimming control

AVAILABLE ZHAGA OPTIONS

DYF	Sensor Ready with Dynadimmer
SR	Sensor Ready

XSP High Output Series

XSP1™ High Output LED Street/Area Luminaire - Single Module



Control options - Input Power Designator E

FIXED OUTPUT FX/DIM - INPUT POWER "E"					
Setting Code	System Watts W	Nominal flux (lm)			Description
		3000K	4000K	5700K	
FX01EE1-0009	94	11731	12350	12426	FIXED OUTPUT - MAX WATTAGE SET TO 94W
FX01EE1-0008	87	11033	11615	11686	FIXED OUTPUT- MAX WATTAGE SET TO 87W
FX01EE1-0007	85	10828	11399	11469	FIXED OUTPUT - MAX WATTAGE SET TO 85W
FX01EE1-0006	78	10108	10641	10706	FIXED OUTPUT - MAX WATTAGE SET TO 78W
FX01EE1-0005	74	9766	10281	10344	FIXED OUTPUT - MAX WATTAGE SET TO 74W
FX01EE1-0004	71	9428	9925	9986	FIXED OUTPUT - MAX WATTAGE SET TO 71W
FX01EE1-0003	65	8751	9212	9269	FIXED OUTPUT - MAX WATTAGE SET TO 65W
FX01EE1-0002	58	7977	8398	8449	FIXED OUTPUT - MAX WATTAGE SET TO 58W
FX01EE1-0001	48	6758	7114	7158	FIXED OUTPUT - MAX WATTAGE SET TO 48W

LUMISTEP 6hrs - INPUT POWER "E"									
Setting Code 6hrs	System Watts W (High Mode)	Nominal flux (lm)			System Watts W (Low Mode)	Nominal flux (lm)			Description 6 hrs
		3000K	4000K	5700K		3000K	4000K	5700K	
LS01EE1-0010	94	11731	12350	12426	47	6648	6998	7041	LS ON-94W / 00:00-47W / 06:00-94W
LS01EE1-0011	87	11033	11615	11686	44	6213	6540	6580	LS ON-87W / 00:00-44W / 06:00-87W
LS01EE1-0012	85	10828	11399	11469	43	6087	6408	6447	LS ON-85W / 00:00-43W / 06:00-85W
LS01EE1-0013	78	10108	10641	10706	39	5642	5939	5976	LS ON-78W / 00:00-39W / 06:00-78W
LS01EE1-0014	74	9766	10281	10344	37	5384	5668	5702	LS ON-74W / 00:00-37W / 06:00-74W
LS01EE1-0015	71	9428	9925	9986	36	5189	5462	5496	LS ON-71W / 00:00-36W / 06:00-71W
LS01EE1-0016	65	8751	9212	9269	33	4794	5046	5077	LS ON-65W / 00:00-33W / 06:00-65W
LS01EE1-0017	58	7977	8398	8449	29	4326	4554	4581	LS ON-58W / 00:00-29W / 06:00-58W
LS01EE1-0018	48	6758	7114	7158	24	3643	3835	3858	LS ON-48W / 00:00-24W / 06:00-48W

*Other setting options are available. For more information, contact Cree Lighting Europe.

LUMISTEP 8hrs - INPUT POWER "E"									
Setting Code 8hrs	System Watts W (High Mode)	Nominal flux (lm)			System Watts W (Low Mode)	Nominal flux (lm)			Description 8hrs
		3000K	4000K	5700K		3000K	4000K	5700K	
LS01EE1-0001	94	11731	12350	12426	47	6648	6998	7041	LS ON-94W / 22:00-47W / 06:00-94W
LS01EE1-0002	87	11033	11615	11686	44	6213	6540	6580	LS ON-87W / 22:00-44W / 06:00-87W
LS01EE1-0003	85	10828	11399	11469	43	6087	6408	6447	LS ON-85W / 22:00-43W / 06:00-85W
LS01EE1-0004	78	10108	10641	10706	39	5642	5939	5976	LS ON-78W / 22:00-39W / 06:00-78W
LS01EE1-0005	74	9766	10281	10344	37	5384	5668	5702	LS ON-74W / 22:00-37W / 06:00-74W
LS01EE1-0006	71	9428	9925	9986	36	5189	5462	5496	LS ON-71W / 22:00-36W / 06:00-71W
LS01EE1-0007	65	8751	9212	9269	33	4794	5046	5077	LS ON-65W / 22:00-33W / 06:00-65W
LS01EE1-0008	58	7977	8398	8449	29	4326	4554	4581	LS ON-58W / 22:00-29W / 06:00-58W
LS01EE1-0009	48	6758	7114	7158	24	3643	3835	3858	LS ON-48W / 22:00-24W / 06:00-48W

*Other setting options are available. For more information, contact Cree Lighting Europe.

XSP High Output Series

XSP1™ High Output LED Street/Area Luminaire - Single Module



Control options - Input Power Designator H

FIXED OUTPUT		
Setting code	Description	Option
DL01HE1-0001	DALI MAX 63W	DALI
DL01HE1-0002	DALI MAX 67W	DALI
FX01HE1-0001	FIXED OUTPUT 27W	FIXED
FX01HE1-0002	FIXED OUTPUT 35W	FIXED
FX01HE1-0003	FIXED OUTPUT 42W	FIXED
FX01HE1-0004	FIXED OUTPUT 50W	FIXED
FX01HE1-0005	FIXED OUTPUT 55W	FIXED
FX01HE1-0006	FIXED OUTPUT 63W	FIXED
FX01HE1-0007	FIXED OUTPUT 67W	FIXED

LUMISTEP 6hrs - INPUT POWER "H"									
Setting Code 6hrs	System Watts W (High Mode)	Nominal flux (lm)			System Watts W (Low Mode)	Nominal flux (lm)			Description 6 hrs
		3000K	4000K	5700K		3000K	4000K	5700K	
LS01HE1-0014	67	8856	9323	9380	34	5139	5410	5443	LS ON-67W / 00:00-34W / 06:00-67W
LS01HE1-0012	63	8335	8774	8828	32	4916	5176	5207	LS ON-63W / 00:00-32W / 06:00-63W
LS01HE1-0011	55	7496	7891	7939	28	4451	4685	4714	LS ON-55W / 00:00-28W / 06:00-55W
LS01HE1-0010	50	6951	7318	7363	25	4100	4316	4342	LS ON-50W / 00:00-25W / 06:00-50W
LS01HE1-0009	42	6056	6375	6414	21	3627	3818	3841	LS ON-42W / 00:00-21W / 06:00-42W
LS01HE1-0008	35	5260	5538	5571	21	3627	3818	3841	LS ON-35W / 00:00-21W / 06:00-35W
LS01HE1-0007	27	4336	4565	4593	21	3627	3818	3841	LS ON-27W / 00:00-21W / 06:00-27W

*Other setting options are available. For more information, contact Cree Lighting Europe.

LUMISTEP 8hrs - INPUT POWER "H"									
Setting Code 8hrs	System Watts W (High Mode)	Nominal flux (lm)			System Watts W (Low Mode)	Nominal flux (lm)			Description 8hrs
		3000K	4000K	5700K		3000K	4000K	5700K	
LS01HE1-0013	67	8856	9323	9380	34	5139	5410	5443	LS ON-67W / 22:00-34W / 06:00-67W
LS01HE1-0006	63	8335	8774	8828	32	4916	5176	5207	LS ON-63W / 22:00-32W / 06:00-63W
LS01HE1-0005	55	7496	7891	7939	28	4451	4685	4714	LS ON-55W / 22:00-28W / 06:00-55W
LS01HE1-0004	50	6951	7318	7363	25	4100	4316	4342	LS ON-50W / 22:00-25W / 06:00-50W
LS01HE1-0003	42	6056	6375	6414	21	3627	3818	3841	LS ON-42W / 22:00-21W / 06:00-42W
LS01HE1-0002	35	5260	5538	5571	21	3627	3818	3841	LS ON-35W / 22:00-21W / 06:00-35W
LS01HE1-0001	27	4336	4565	4593	21	3627	3818	3841	LS ON-27W / 22:00-21W / 06:00-27W

*Other setting options are available. For more information, contact Cree Lighting Europe.

XSP High Output Series

XSP1™ High Output LED Street/Area Luminaire - Single Module



Control options - Input Power Designator H

CLO - INPUT POWER "H"	
Setting Code	Description
CLO1HE1-0001	MAX 63W CLO 50.000 HOURS START AT 90%
CLO1HE1-0002	MAX 63W CLO 100.000 HOURS START AT 80%
CLO1HE1-0003	MAX 67W CLO 50.000 HOURS START AT 90%
CLO1HE1-0004	MAX 67W CLO 100.000 HOURS START AT 80%

*Other setting options are available. For more information, contact Cree Lighting Europe.

DYNADIMMER 6hrs - INPUT POWER "H"													
Setting Code 6hrs	W Max	Nominal flux (lm)			W Med	Nominal flux (lm)			W Min	Nominal flux (lm)			Description 6hrs
		3000K	4000K	5700K		3000K	4000K	5700K		3000K	4000K	5700K	
DY01HE1-0019	67	8856	9323	9380					34	5139	5410	5443	DY ON-67W / 00:00-34W / 06:00-67W
DY01HE1-0012	63	8335	8774	8828					32	4916	5176	5207	DY ON-63W / 00:00-32W / 06:00-63W
DY01HE1-0011	55	7496	7891	7939					28	4451	4685	4714	DY ON-55W / 00:00-28W / 06:00-55W
DY01HE1-0010	50	6951	7318	7363					25	4100	4316	4342	DY ON-50W / 00:00-25W / 06:00-50W
DY01HE1-0009	42	6056	6375	6414					21	3627	3818	3841	DY ON-42W / 00:00-21W / 06:00-42W
DY01HE1-0008	35	5260	5538	5571					21	3627	3818	3841	DY ON-35W / 00:00-21W / 06:00-35W
DY01HE1-0007	27	4336	4565	4593					21	3627	3818	3841	DY ON-27W / 00:00-21W / 06:00-27W

*Other setting options are available. For more information, contact Cree Lighting Europe.

DYNADIMMER 8hrs - INPUT POWER "H"													
Setting Code 8hrs	W Max	Nominal flux (lm)			W Med	Nominal flux (lm)			W Min	Nominal flux (lm)			Description 8hrs
		3000K	4000K	5700K		3000K	4000K	5700K		3000K	4000K	5700K	
DY01HE1-0018	67	8856	9323	9380					34	5139	5410	5443	DY ON-67W / 22:00-34W / 06:00-67W
DY01HE1-0006	63	8335	8774	8828					32	4916	5176	5207	DY ON-63W / 22:00-32W / 06:00-63W
DY01HE1-0005	55	7496	7891	7939					28	4451	4685	4714	DY ON-55W / 22:00-28W / 06:00-55W
DY01HE1-0004	50	6951	7318	7363					25	4100	4316	4342	DY ON-50W / 22:00-25W / 06:00-50W
DY01HE1-0003	42	6056	6375	6414					21	3627	3818	3841	DY ON-42W / 22:00-21W / 06:00-42W
DY01HE1-0002	35	5260	5538	5571					21	3627	3818	3841	DY ON-35W / 22:00-21W / 06:00-35W
DY01HE1-0001	27	4336	4565	4593					21	3627	3818	3841	DY ON-27W / 22:00-21W / 06:00-27W
DY01HE1-0020	67	8856	9323	9380	50	6951	7318	7363	34	5139	5410	5443	DY ON-67W / 22:00-50W / 00:00-34W / 06:00-67W
DY01HE1-0017	63	8335	8774	8828	47	6614	6963	7006	32	4916	5176	5207	DY ON-63W / 22:00-47W / 00:00-32W / 06:00-63W
DY01HE1-0016	55	7496	7891	7939	42	6056	6375	6414	28	4451	4685	4714	DY ON-55W / 22:00-42W / 00:00-28W / 06:00-55W
DY01HE1-0015	50	6951	7318	7363	38	5604	5900	5936	25	4100	4316	4342	DY ON-50W / 22:00-38W / 00:00-25W / 06:00-50W
DY01HE1-0014	42	6056	6375	6414	32	4916	5176	5207	21	3627	3818	3841	DY ON-42W / 22:00-32W / 00:00-21W / 06:00-42W
DY01HE1-0013	35	5260	5538	5571	26	4221	4444	4471	21	3627	3818	3841	DY ON-35W / 22:00-26W / 00:00-21W / 06:00-35W

*Other setting options are available. For more information, contact Cree Lighting Europe.

XSP High Output Series

XSP1™ High Output LED Street/Area Luminaire - Single Module



Control options - Input Power Designator L

SR - FIXED - INPUT POWER "L"					
Setting Code	System Watts W	Nominal flux (lm)			Description
		3000K	4000K	5700K	
FX01LE1-0007	67	8856	9323	9380	FIXED OUTPUT 67W SR
FX01LE1-0006	63	8335	8774	8828	FIXED OUTPUT 63W SR
FX01LE1-0005	55	7496	7891	7939	FIXED OUTPUT 55W SR
FX01LE1-0004	50	6951	7318	7363	FIXED OUTPUT 50W SR
FX01LE1-0003	42	6056	6375	6414	FIXED OUTPUT 42W SR
FX01LE1-0002	35	5260	5538	5571	FIXED OUTPUT 35W SR
FX01LE1-0001	27	4336	4565	4593	FIXED OUTPUT 27W SR

*Other setting options are available. For more information, contact Cree Lighting Europe.

SR - DYNADIMMER 6HRS VERSION - INPUT POWER "L"									
Setting Code 6hrs	System Watts W (High Mode)	Nominal flux (lm)			System Watts W (Low Mode)	Nominal flux (lm)			Description 6 hrs
		3000K	4000K	5700K		3000K	4000K	5700K	
DY01LE1-0014	67	8856	9323	9380	34	5139	5410	5443	DY ON-67W / 00:00-34W / 06:00-67W SR
DY01LE1-0013	63	8335	8774	8828	32	4916	5176	5207	DY ON-63W / 00:00-32W / 06:00-63W SR
DY01LE1-0012	55	7496	7891	7939	28	4451	4685	4714	DY ON-55W / 00:00-28W / 06:00-55W SR
DY01LE1-0011	50	6951	7318	7363	25	4100	4316	4342	DY ON-50W / 00:00-25W / 06:00-50W SR
DY01LE1-0010	42	6056	6375	6414	21	3627	3818	3841	DY ON-42W / 00:00-21W / 06:00-42W SR
DY01LE1-0009	35	5260	5538	5571	21	3627	3818	3841	DY ON-35W / 00:00-21W / 06:00-35W SR
DY01LE1-0008	27	4336	4565	4593	21	3627	3818	3841	DY ON-27W / 00:00-21W / 06:00-27W SR

*Other setting options are available. For more information, contact Cree Lighting Europe.

SR - DYNADIMMER 8hrs - INPUT POWER "L"													
Setting Code 8hrs	W Max	Nominal flux (lm)			W Med	Nominal flux (lm)			W Min	Nominal flux (lm)			Description 8hrs
		3000K	4000K	5700K		3000K	4000K	5700K		3000K	4000K	5700K	
DY01LE1-0007	67	8856	9323	9380					34	5139	5410	5443	DY ON-67W / 22:00-34W / 06:00-67W SR
DY01LE1-0006	63	8335	8774	8828					32	4916	5176	5207	DY ON-63W / 22:00-32W / 06:00-63W SR
DY01LE1-0005	55	7496	7891	7939					28	4451	4685	4714	DY ON-55W / 22:00-28W / 06:00-55W SR
DY01LE1-0004	50	6951	7318	7363					25	4100	4316	4342	DY ON-50W / 22:00-25W / 06:00-50W SR
DY01LE1-0003	42	6056	6375	6414					21	3627	3818	3841	DY ON-42W / 22:00-21W / 06:00-42W SR
DY01LE1-0002	35	5260	5538	5571					21	3627	3818	3841	DY ON-35W / 22:00-21W / 06:00-35W SR
DY01LE1-0001	27	4336	4565	4593					21	3627	3818	3841	DY ON-27W / 22:00-21W / 06:00-27W SR
DY01LE1-0020	67	8856	9323	9380	50	3797	3997	4022	34	5139	5410	5443	DY ON-67W / 22:00-50W / 00:00-34W / 06:00-67W SR
DY01LE1-0019	63	8335	8774	8828	47	6614	6963	7006	32	4916	5176	5207	DY ON-63W / 22:00-47W / 00:00-32W / 06:00-63W SR
DY01LE1-0018	55	7496	7891	7939	42	3154	3320	3340	28	4451	4685	4714	DY ON-55W / 22:00-42W / 00:00-28W / 06:00-55W SR
DY01LE1-0017	50	6951	7318	7363	38	5604	5900	5936	25	4100	4316	4342	DY ON-50W / 22:00-38W / 00:00-25W / 06:00-50W SR
DY01LE1-0016	42	6056	6375	6414	32	4916	5176	5207	21	3627	3818	3841	DY ON-42W / 22:00-32W / 00:00-21W / 06:00-42W SR
DY01LE1-0015	35	5260	5538	5571	26	4221	4444	4471	21	3627	3818	3841	DY ON-35W / 22:00-26W / 00:00-21W / 06:00-35W SR

*Other setting options are available. For more information, contact Cree Lighting Europe.

XSP High Output Series

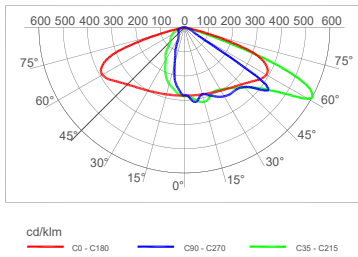
XSP1™ High Output LED Street/Area Luminaire - Single Module



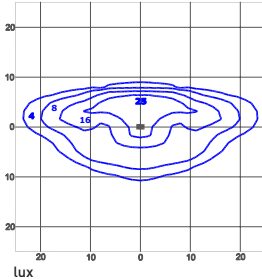
Photometry

All published luminaire photometric testing performed to IESNA LM-79-08 standards by an external laboratory. To obtain an IES file specific to your project consult: www.creelighting-europe.com

2LG - Type II Long



Test Report #: PL11703-033

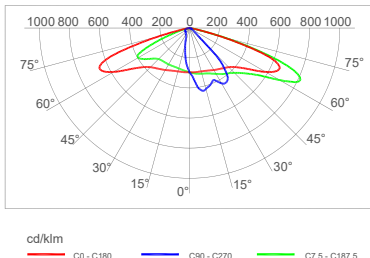


XSPE022LGE40K
Mounting Height: 8m

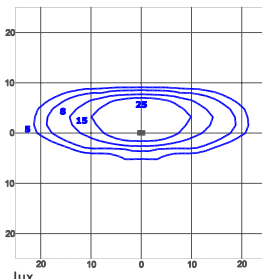
LUMEN OUTPUT - 2LG (Type II Long)			
Input Power Designator	3000K	4000K	5700K
		Initial Delivered Lumens*	Initial Delivered Lumens*
E	10434	10984	11051
H / L	7876	8291	8342

* Initial delivered lumens at 25°C (77°F). Actual production yield may vary between -4 and +10% of initial delivered lumens

275 - Type II Short 0.75



Test Report #: PL11703-028

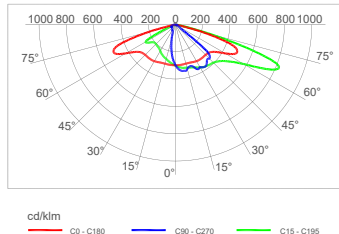


XSPE02275E40K
Mounting Height: 8m

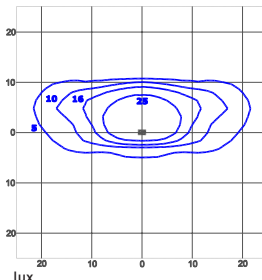
LUMEN OUTPUT - 275 (Type II Short 0.75)			
Input Power Designator	3000K	4000K	5700K
		Initial Delivered Lumens*	Initial Delivered Lumens*
E	10697	11261	11330
H / L	8074	8500	8552

* Initial delivered lumens at 25°C (77°F). Actual production yield may vary between -4 and +10% of initial delivered lumens

210 - Type II Short 1.0



Test Report #: PL11703-010

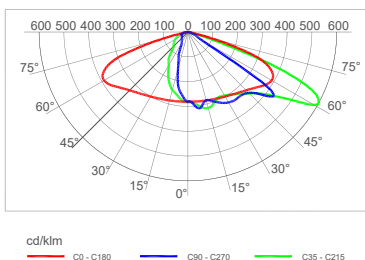


XSPE02210E40K
Mounting Height: 8m

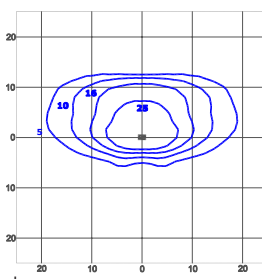
LUMEN OUTPUT - 210 (Type II Short 1.0)			
Input Power Designator	3000K	4000K	5700K
		Initial Delivered Lumens*	Initial Delivered Lumens*
E	10800	11369	11439
H / L	8153	8582	8635

* Initial delivered lumens at 25°C (77°F). Actual production yield may vary between -4 and +10% of initial delivered lumens

2SH - Type II Short



Test Report #: PL11703-029



XSPE022SHE40K
Mounting Height: 8m

LUMEN OUTPUT - 2SH (Type II Short)			
Input Power Designator	3000K	4000K	5700K
		Initial Delivered Lumens*	Initial Delivered Lumens*
E	10873	11447	11517
H / L	8207	8640	8693

* Initial delivered lumens at 25°C (77°F). Actual production yield may vary between -4 and +10% of initial delivered lumens

XSP High Output Series

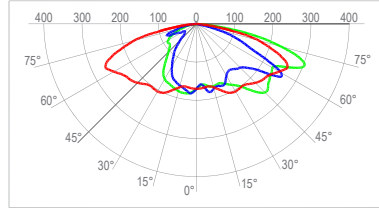
XSP1™ High Output LED Street/Area Luminaire - Single Module



Photometry

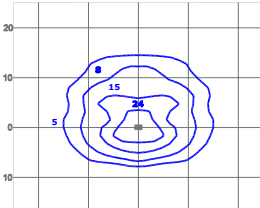
All published luminaire photometric testing performed to IESNA LM-79-08 standards by an external laboratory. To obtain an IES file specific to your project consult: www.creelighting-europe.com

3SH - Type III Short



cd/klm
 C0 - C180 C90 - C270 C45 - C215

Test Report #: PL11703-030

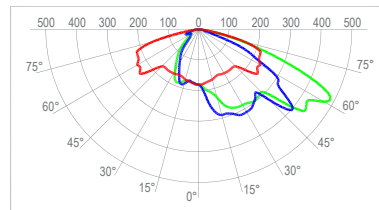


lux
 XSPE023SHE40K
 Mounting Height: 8m

LUMEN OUTPUT - 3SH (Type III Short)			
Input Power Designator	3000K	4000K	5700K
		Initial Delivered Lumens*	Initial Delivered Lumens*
E	9934	10457	10521
H / L	7498	7894	7942

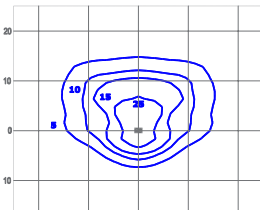
* Initial delivered lumens at 25°C (77°F). Actual production yield may vary between -4 and +10% of initial delivered lumens

3ME - Type II Medium



cd/klm
 C0 - C180 C90 - C270 C45 - C225

Test Report #: PL11703-031

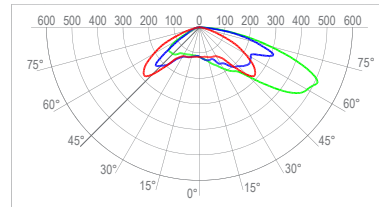


lux
 XSPE023MEE40K
 Mounting Height: 8m

LUMEN OUTPUT - 3ME (Type II Medium)			
Input Power Designator	3000K	4000K	5700K
		Initial Delivered Lumens*	Initial Delivered Lumens*
E	10442	10993	11060
H / L	7882	8298	8348

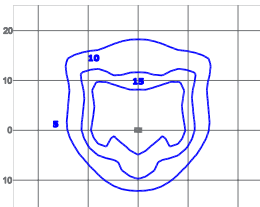
* Initial delivered lumens at 25°C (77°F). Actual production yield may vary between -4 and +10% of initial delivered lumens

4ME - Type IV Medium



cd/klm
 C0 - C180 C90 - C270 C45 - C225

Test Report #: PL11703-032



lux
 XSPE024MEE40K
 Mounting Height: 8m

LUMEN OUTPUT - 4ME (Type IV Medium)			
Input Power Designator	3000K	4000K	5700K
		Initial Delivered Lumens*	Initial Delivered Lumens*
E	10817	11387	11457
H / L	8165	8593	8648

* Initial delivered lumens at 25°C (77°F). Actual production yield may vary between -4 and +10% of initial delivered lumens

© 2022 Cree Lighting, S.p.A. All rights reserved. For informational purposes only. Content is subject to change. Patent www.creelighting.com/patents. Cree® and the Cree logo are registered trademarks and the Cree SmartCast Technology Logo is a trademark of Cree, Inc.