

# XSP High Output Series

XSP2™ High Output LED Street/Area Luminaire - Double Module



## Product Description

Designed from the ground up as a totally optimized LED street and area lighting system, the XSP High Output Series delivers incredible efficiency without sacrificing application performance. Beyond substantial energy savings and reduced maintenance, Cree achieves greater optical control with our NanoOptic® Precision Delivery Grid™ optic when compared to traditional cobra head luminaires. The XSP High Output Series is the better alternative for traditional street and area lighting with quick payback and improved performance.

**Applications:** Roadway, parking lots, walkways and general area spaces.

## Performance Summary

NanoOptic® Precision Delivery Grid™ optic

**Efficacy:** Up to 146 lm/W

**Initial Colour consistency:** 4 MacAdam steps

**Limited Warranty:** Class 1 — 10 years on luminaire / 10 years on Colorfast DeltaGuard® finish  
Class 2 — 5 years on luminaire / 10 years on Colorfast DeltaGuard® finish

*Extended warranty (up to 10 years) available for Class II luminaires on approved projects. Contact ADLT for further information.*



## Ordering Information

Ex.:XSP-E-02-2LG-I-30K-+-24-SV-LS-S-00+LW02IE1-0007

XSP	- E	- 02	- 2LG	- I	- 30K	- +	- 24	- SV	- FX	- S	- 00
Product	Version	Mounting	Optic	Input Power	CCT	Insulation Class	Voltage	Finish	Options	Variant	Cable length
XSP	E	02 horiz/vert tenon 60mm OD	2LG Type II long	I 128W	30K 3000K	+ Class 1	24 220-240V	SV Silver	Input Power L: FX* Fixed Input Power LS Lumistep DL DALI CL Constant lumen output DY* Dynadimmer	S Standard	00 Standard (w/o cable)
		03 horiz/vert tenon 76mm OD	275 Type II short 0.75	M 128W	40K 4000K	^ Class 2		BK Black		N Nema 7pin	01 Exit cable 30cm
			210 Type II short 1,0		57K 5700K			WH White		SF Standard +Fuse	03 Exit cable 3m
			2SH Type II short							NF Nema +Fuse	06 Exit cable 6m
			3SH Type III short								
			3ME Type III medium								
			4ME Type IV medium								
									Input Power M: DYF Dynadimmer SR Sensor Ready	Z Zhaga Socket	10 Exit cable 10m
										ZF Zhaga Socket + Fuse	12 Exit cable 12m

\* Can be combined with CLO functionality, for information contact Cree Lighting Europe

## Accessory Information

### ADAPTER

#### KIT-XSP-AP60-34-G0

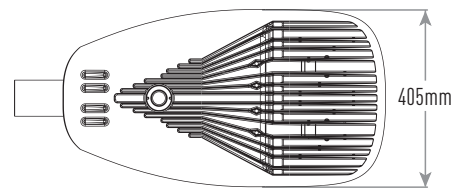
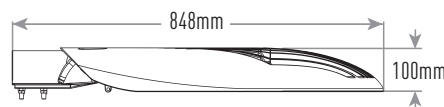
Fitter kit to mount to 34mm tenon

#### KIT-XSP-AP60-42-G0

Fitter kit to mount to 42mm tenon

#### KIT-XSP-AP60-48-G0

Fitter kit to mount to 48mm tenon



# XSP High Output Series

XSP2™ High Output LED Street/Area Luminaire - Double Module



## FEATURES

- Full cut-off optics (NanoOptic® Precision Delivery Grid™)
- Lumen output: 9500 – 17000lm
- Efficacy: Up to 146lm/W
- CCT: 3000K, 4000K, 5700K
- CRI Standard min.70
- Initial Colour Consistency: 4 MacAdam steps
- Input Voltage: 220-240V
- Driver equipped with with over-temperature protection to preserve optimal working conditions
- Power factor: Up to > 0.98 at full load
- Lifetime: L80F10 Up to >193Khrs Ta=25°C (According to IEC/EN 62717 and IESNA TM-21)
- Surge protection: 10kV CM/DM surge immunity according to EN 61000-4-5 and EN 61547 (Class I SPD equipped with LED signal)
- Fuse option available
- Operative temperature: -40°C up to +50°C
- Insulation class: Class I – Class II
- Enclosure rated IP66 per IEC 60529
- Impact resistance IK08
- Cable type H07RN-F (Cable length Up to 12mt)
- Tool-less entry
- Removable tray
- Control options: DALI, Lumistep, Dynadimmer, Constant Lumen Output, Sensor Ready
- Zhaga option is available
- Nema socket option available
- LED Board equipped with integral ESD and Surge protection
- Fixture assembled without the use of glues, totally dismountable and recyclable.

## CONSTRUCTION AND MATERIALS

- Die cast, low copper <0,1%, aluminum alloy housing for long weathering and reliability
- Luminaire is designed to mount directly to 76mm or 60mm outer dimension tenons or poles and can be tilted +/- 20°, in steps of 5°
- Luminaire fitter 02 can mount to 60mm OD tenons and fitter 03 to 76mm
- Exclusive Colorfast DeltaGuard® finish features an E-Coat epoxy primer with an ultra-durable powder topcoat, providing excellent resistance to corrosion, ultraviolet degradation and abrasion.

## WARRANTY AND CERTIFICATIONS

- Limited Warranty: Class 1 — 10 years on Colorfast DeltaGuard® finish / 10 years on luminaire
- Limited Warranty: Class 2 — 10 years on Colorfast DeltaGuard® finish / 5 years on luminaire
- CE mark / CB mark / ENEC mark / RoHs compliant
- UMSUG Charge code (UK Power performance test)
- Risk group exempt in accordance with Standard CEI EN 62471 for photobiological safety (Tested IEC/TR62778)
- Luminaire and finish endurance tested to withstand 5,000 hours of elevated ambient salt fog conditions as defined in ASTM Standard B 117
- Compliant to: EN 60598-1; EN 60598-2-3
- UMSUG Charge code (UK Power performance test)

## ELECTRICAL DATA\*

Input Power Designator	System Watts 220-240V	Total Current	Power Factor
		@230V, 50Hz	
I / M	128	0,57 A	0,98

\* Electrical data at 25°C (77°F)

## RECOMMENDED CREE® OUTDOOR LUMINAIRE LUMEN MAINTENANCE FACTORS (LMF)<sup>1</sup>

Ambient	Initial LMF	25K hr Projected <sup>2</sup> LMF	50K hr Projected <sup>2</sup> LMF	75K hr Calculated <sup>3</sup> LMF	100K hr Calculated <sup>3</sup> LMF
25°C	1,00	0,99	0,97	0,95	0,93
50°C	0,96	0,95	0,93	0,91	0,89

<sup>1</sup> Lumen maintenance values at 25°C (77°F) are calculated per TM-21 based on LM-80 data and in-situ luminaire testing

<sup>2</sup> In accordance with IESNA TM-21-11, Projected Values represent interpolated value based on time durations that are within six times (6x) the IESNA LM-80-08 total test duration (in hours) for the device under testing (DUT) i.e. the packaged LED chip

<sup>3</sup> According with TM-21 the projected value can be just up to 6x time the test time

## WEIGHT AND MAXIMUM WIND AREA

Weight	Lateral Surface Wind Exposed
15 kg	0.090m <sup>2</sup>

## AVAILABLE NEMA OPTIONS

DL-N	Nema 7 pin with DALI	(on-off + Dim)
DY-N	Nema 7 pin with Dynadimmer	(on-off)
CL-N	Nema 7 pin with CLO	(on-off)

- on-off: Nema allows for on-off control only

- on-off + Dim: Nema allows for on-off and dimming control

## AVAILABLE ZHAGA OPTIONS

DYF	Sensor Ready with Dynadimmer
SR	Sensor Ready

# XSP High Output Series

XSP2™ High Output LED Street/Area Luminaire - Double Module



## Control options - Input Power Designator I

LINESWITCH - INPUT POWER "I"									
Setting Code	System Watts W (High Mode)	Nominal flux (lm)			System Watts W (Low Mode)	Nominal flux (lm)			Description
		3000K	4000K	5700K		3000K	4000K	5700K	
LW02IE1-0007	128	17653	18583	18697	64	9768	10283	10346	LINESWITCH (100%/50%) - 128W/ 64W
LW02IE1-0006	110	15591	16413	16513	56	8603	9057	9112	LINESWITCH (83%/42%) - 110W/ 56W
LW02IE1-0005	107	15342	16150	16249	54	8311	8750	8803	LINESWITCH (81%/41%) - 107W/ 54W
LW02IE1-0004	98	14252	15004	15096	50	7728	8135	8185	LINESWITCH (74%/38%) - 98W/ 50W
LW02IE1-0003	89	13119	13811	13895	45	7007	7377	7422	LINESWITCH (67%/34%) - 89W/ 45W
LW02IE1-0002	79	11837	12461	12538	39	6115	6437	6476	LINESWITCH (60%/30%) - 79W/ 39W
LW02IE1-0001	70	10611	11171	11239	35	5514	5805	5840	LINESWITCH (53%/27%) - 70W/ 35W

\*Other setting options are available. For more information, contact Cree Lighting Europe.

DYNADIMMER 6hrs - INPUT POWER "I"													
Setting Code 6hrs	W Max	Nominal flux (lm)			W Med	Nominal flux (lm)			W Min	Nominal flux (lm)			Description 6hrs
		3000K	4000K	5700K		3000K	4000K	5700K		3000K	4000K	5700K	
DY02IE1-0020	128	17653	18583	18697					64	9768	10283	10346	DY ON-128W / 00:00-64W / 06:00-128W
DY02IE1-0012	110	15591	16413	16513					56	8603	9057	9112	DY ON-110W / 00:00-56W / 06:00-110W
DY02IE1-0011	107	15342	16150	16249					54	8311	8750	8803	DY ON-107W / 00:00-54W / 06:00-107W
DY02IE1-0010	98	14252	15004	15096					50	7728	8135	8185	DY ON-98W / 00:00-50W / 06:00-98W
DY02IE1-0009	89	13119	13811	13895					45	7007	7377	7422	DY ON-89W / 00:00-45W / 06:00-89W
DY02IE1-0008	79	11837	12461	12538					39	6115	6437	6476	DY ON-79W / 00:00-39W / 06:00-79W
DY02IE1-0007	70	10611	11171	11239					35	5514	5805	5840	DY ON-70W / 00:00-35W / 06:00-70W
CRO4CE1-0009	22	3277	3450	3471					16	2442	2571	2587	CR ON-22W / 00:00-16W / 06:00-22W

\*Other setting options are available. For more information, contact Cree Lighting Europe.

DYNADIMMER 8hrs - INPUT POWER "I"													
Setting Code 8hrs	W Max	Nominal flux (lm)			W Med	Nominal flux (lm)			W Min	Nominal flux (lm)			Description 8hrs
		3000K	4000K	5700K		3000K	4000K	5700K		3000K	4000K	5700K	
DY02IE1-0019	128	17653	18583	18697					64	9768	10283	10346	DY ON-128W / 22:00-64W / 06:00-128W
DY02IE1-0006	110	15591	16413	16513					56	8603	9057	9112	DY ON-110W / 22:00-56W / 06:00-110W
DY02IE1-0005	107	15342	16150	16249					54	8311	8750	8803	DY ON-107W / 22:00-54W / 06:00-107W
DY02IE1-0004	98	14252	15004	15096					50	7728	8135	8185	DY ON-98W / 22:00-50W / 06:00-98W
DY02IE1-0003	89	13119	13811	13895					45	7007	7377	7422	DY ON-89W / 22:00-45W / 06:00-89W
DY02IE1-0002	79	11837	12461	12538					39	6115	6437	6476	DY ON-79W / 22:00-39W / 06:00-79W
DY02IE1-0001	70	10611	11171	11239					35	5514	5805	5840	DY ON-70W / 22:00-35W / 06:00-70W
DY02IE1-0021	128	17653	18583	18697	96	13984	14721	14811	64	9768	10283	10346	DY ON-128W / 22:00-96W / 00:00-64W / 06:00-128W
DY02IE1-0018	110	15591	16413	16513	83	12328	12978	13057	56	8603	9057	9112	DY ON-110W / 22:00-83W / 00:00-56W / 06:00-110W
DY02IE1-0017	107	15342	16150	16249	80	11960	12591	12668	54	8311	8750	8803	DY ON-107W / 22:00-80W / 00:00-54W / 06:00-107W
DY02IE1-0016	98	14252	15004	15096	73	11040	11622	11693	50	7728	8135	8185	DY ON-98W / 22:00-73W / 00:00-50W / 06:00-98W
DY02IE1-0015	89	13119	13811	13895	66	10045	10575	10640	45	7007	7377	7422	DY ON-89W / 22:00-66W / 00:00-45W / 06:00-89W
DY02IE1-0014	79	11837	12461	12538	59	9032	9508	9567	39	6115	6437	6476	DY ON-79W / 22:00-59W / 00:00-39W / 06:00-79W
DY02IE1-0013	70	10611	11171	11239	52	8020	8442	8494	35	5514	5805	5840	DY ON-70W / 22:00-52W / 00:00-35W / 06:00-70W

\*Other setting options are available. For more information, contact Cree Lighting Europe.

# XSP High Output Series

XSP2™ High Output LED Street/Area Luminaire - Double Module



## Control options - Input Power Designator I

CLO - INPUT POWER "I"	
Setting Code	Description
CLO2IE1-0001	MAX 110W CLO 50.000 HOURS START AT 90%
CLO2IE1-0002	MAX 110W CLO 100.000 HOURS START AT 80%
CLO2IE1-0003	MAX 128W CLO 50.000 HOURS START AT 90%
CLO2IE1-0004	MAX 128W CLO 100.000 HOURS START AT 80%

\*Other setting options are available. For more information, contact Cree Lighting Europe.

LUMISTEP 6hrs - INPUT POWER "I"									
Setting Code 6hrs	System Watts W (High Mode)	Nominal flux (lm)			System Watts W (Low Mode)	Nominal flux (lm)			Description 6hrs
		3000K	4000K	5700K		3000K	4000K	5700K	
LS02IE1-0014	128	17653	18583	18697	64	9768	10283	10346	LS ON-128W / 00:00-64W / 06:00-128W
LS02IE1-0012	110	15591	16413	16513	56	8603	9057	9112	LS ON-110W / 00:00-56W / 06:00-110W
LS02IE1-0011	107	15342	16150	16249	54	8311	8750	8803	LS ON-107W / 00:00-54W / 06:00-107W
LS02IE1-0010	98	14252	15004	15096	50	7728	8135	8185	LS ON-98W / 00:00-50W / 06:00-98W
LS02IE1-0009	89	13119	13811	13895	45	7007	7377	7422	LS ON-89W / 00:00-45W / 06:00-89W
LS02IE1-0008	79	11837	12461	12538	39	6115	6437	6476	LS ON-79W / 00:00-39W / 06:00-79W
LS02IE1-0007	70	10611	11171	11239	35	5514	5805	5840	LS ON-70W / 00:00-35W / 06:00-70W
DY04BE1-0001	21	3154	3320	3340	16	2333	2456	2471	DY ON-21W / 22:00-16W / 06:00-21W

\*Other setting options are available. For more information, contact Cree Lighting Europe.

LUMISTEP 8hrs - INPUT POWER "I"									
Setting Code 8hrs	System Watts W (High Mode)	Nominal flux (lm)			System Watts W (Low Mode)	Nominal flux (lm)			Description 8hrs
		3000K	4000K	5700K		3000K	4000K	5700K	
LS02IE1-0013	128	17653	18583	18697	64	9768	10283	10346	LS ON-128W / 22:00-64W / 06:00-128W
LS02IE1-0006	110	15591	16413	16513	56	8603	9057	9112	LS ON-110W / 22:00-56W / 06:00-110W
LS02IE1-0005	107	15342	16150	16249	54	8311	8750	8803	LS ON-107W / 22:00-54W / 06:00-107W
LS02IE1-0004	98	14252	15004	15096	50	7728	8135	8185	LS ON-98W / 22:00-50W / 06:00-98W
LS02IE1-0003	89	13119	13811	13895	45	7007	7377	7422	LS ON-89W / 22:00-45W / 06:00-89W
LS02IE1-0002	79	11837	12461	12538	39	6115	6437	6476	LS ON-79W / 22:00-39W / 06:00-79W
LS02IE1-0001	70	10611	11171	11239	35	5514	5805	5840	LS ON-70W / 22:00-35W / 06:00-70W
DY04BE1-0001	21	3154	3320	3340	16	2333	2456	2471	DY ON-21W / 22:00-16W / 06:00-21W

\*Other setting options are available. For more information, contact Cree Lighting Europe.

FIXED OUTPUT		
Setting code	Description	Option
DL02IE1-0001	DALI MAX 110W	DALI
DL02IE1-0002	DALI MAX 128W	DALI
FX02IE1-0001	FIXED OUTPUT 70W	FIXED
FX02IE1-0002	FIXED OUTPUT 79W	FIXED
FX02IE1-0003	FIXED OUTPUT 89W	FIXED
FX02IE1-0004	FIXED OUTPUT 98W	FIXED
FX02IE1-0005	FIXED OUTPUT 107W	FIXED
FX02IE1-0006	FIXED OUTPUT 110W	FIXED
FX02IE1-0007	FIXED OUTPUT 128W	FIXED

# XSP High Output Series

XSP2™ High Output LED Street/Area Luminaire - Double Module



## Control Options - Input Power Designator M

SR - FIXED - INPUT POWER "M"					
Setting Code	System Watts W	Nominal flux (lm)			Description
		3000K	4000K	4700K	
FX02ME1-0007	128	17653	18583	18697	FIXED OUTPUT 128W SR
FX02ME1-0006	110	15591	16413	16513	FIXED OUTPUT 110W SR
FX02ME1-0005	107	15342	16150	16249	FIXED OUTPUT 107W SR
FX02ME1-0004	98	14252	15004	15096	FIXED OUTPUT 98W SR
FX02ME1-0003	89	13119	13811	13895	FIXED OUTPUT 89W SR
FX02ME1-0002	79	11837	12461	12538	FIXED OUTPUT 79W SR
FX02ME1-0001	70	10611	11171	11239	FIXED OUTPUT 70W SR

\*Other setting options are available. For more information, contact Cree Lighting Europe.

SR - DYNADIMMER 6HRS VERSION - INPUT POWER "M"									
Setting Code 6hrs	System Watts W (High Mode)	Nominal flux (lm)			System Watts W (Low Mode)	Nominal flux (lm)			Description 6hrs
		3000K	4000K	5700K		3000K	4000K	5700K	
DY02ME1-0014	128	17653	18583	18697	64	9768	10283	10346	DY ON-128W / 00:00-64W / 06:00-128W SR
DY02ME1-0013	110	15591	16413	16513	56	8603	9057	9112	DY ON-110W / 00:00-56W / 06:00-110W SR
DY02ME1-0012	107	15342	16150	16249	54	8311	8750	8803	DY ON-107W / 00:00-54W / 06:00-107W SR
DY02ME1-0011	98	14252	15004	15096	50	7728	8135	8185	DY ON-98W / 00:00-50W / 06:00-98W SR
DY02ME1-0010	89	13119	13811	13895	45	7007	7377	7422	DY ON-89W / 00:00-45W / 06:00-89W SR
DY02ME1-0009	79	11837	12461	12538	39	6115	6437	6476	DY ON-79W / 00:00-39W / 06:00-79W SR
DY02ME1-0008	70	10611	11171	11239	35	5514	5805	5840	DY ON-70W / 00:00-35W / 06:00-70W SR

\*Other setting options are available. For more information, contact Cree Lighting Europe.

DYNADIMMER 8HRS VERSION - INPUT POWER "M"													
Setting Code 8hrs	W Max	Nominal flux (lm)			W Med	Nominal flux (lm)			W Min	Nominal flux (lm)			Description 8hrs
		3000K	4000K	5700K		3000K	4000K	5700K		3000K	4000K	5700K	
DY02ME1-0007	128	17653	18583	18697					64	9768	10283	10346	DY ON-128W / 22:00-64W / 06:00-128W SR
DY02ME1-0006	110	15591	16413	16513					56	8603	9057	9112	DY ON-110W / 22:00-56W / 06:00-110W SR
DY02ME1-0005	107	15342	16150	16249					54	8311	8750	8803	DY ON-107W / 22:00-54W / 06:00-107W SR
DY02ME1-0004	98	14252	15004	15096					50	7728	8135	8185	DY ON-98W / 22:00-50W / 06:00-98W SR
DY02ME1-0003	89	13119	13811	13895					45	7007	7377	7422	DY ON-89W / 22:00-45W / 06:00-89W SR
DY02ME1-0002	79	11837	12461	12538					39	6115	6437	6476	DY ON-79W / 22:00-39W / 06:00-79W SR
DY02ME1-0001	70	10611	11171	11239					35	5514	5805	5840	DY ON-70W / 22:00-35W / 06:00-70W SR
DY02ME1-0021	128	17653	18583	18697	96	13984	14721	14811	64	9768	10283	10346	DY ON-128W / 22:00-96W / 00:00-64W / 06:00-128W SR
DY02ME1-0020	110	15591	16413	16513	83	12328	12978	13057	56	8603	9057	9112	DY ON-110W / 22:00-83W / 00:00-56W / 06:00-110W SR
DY02ME1-0019	107	15342	16150	16249	80	11960	12591	12668	54	8311	8750	8803	DY ON-107W / 22:00-80W / 00:00-54W / 06:00-107W SR
DY02ME1-0018	98	14252	15004	15096	73	11040	11622	11693	50	7728	8135	8185	DY ON-98W / 22:00-73W / 00:00-50W / 06:00-98W SR
DY02ME1-0017	89	13119	13811	13895	66	10045	10575	10640	45	7007	7377	7422	DY ON-89W / 22:00-66W / 00:00-45W / 06:00-89W SR
DY02ME1-0016	79	11837	12461	12538	59	9032	9508	9567	39	6115	6437	6476	DY ON-79W / 22:00-59W / 00:00-39W / 06:00-79W SR
DY02ME1-0015	70	10611	11171	11239	52	8020	8442	8494	35	5514	5805	5840	DY ON-70W / 22:00-52W / 00:00-35W / 06:00-70W SR

\*Other setting options are available. For more information, contact Cree Lighting Europe.

# XSP High Output Series

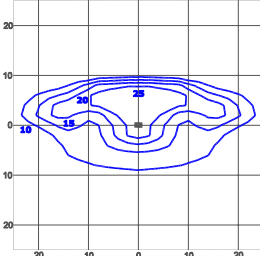
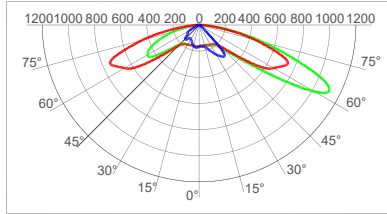
XSP2™ High Output LED Street/Area Luminaire - Double Module



## Photometry

All published luminaire photometric testing performed to IESNA LM-79-08 standards by an external laboratory. To obtain an IES file specific to your project consult: [www.creelighting-europe.com](http://www.creelighting-europe.com)

### 2LG - Type II Long



cd/klm  
 C0 - C180 C90 - C270 C7.5 - C187.5

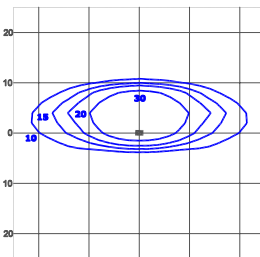
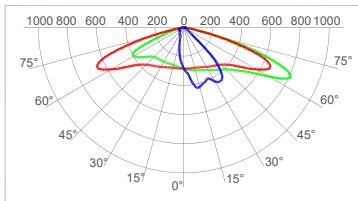
Test Report #: PL11704-015

lux  
 XSPE022LG140K  
 Mounting Height: 10m

LUMEN OUTPUT - 2LG (Type II Long)			
Input Power Designator	3000K	4000K	5700K
	I / M	15926	16766

\* Initial delivered lumens at 25°C (77°F). Actual production yield may vary between -4 and +10% of initial delivered lumens

### 275 - Type II Short 0.75



cd/klm  
 C0 - C180 C90 - C270 C7.5 - C187.5

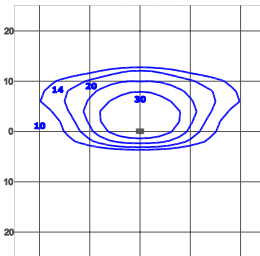
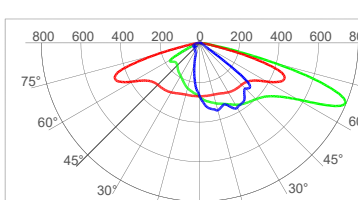
Test Report #: PL11704-010

lux  
 XSPE02275140K  
 Mounting Height: 10m

LUMEN OUTPUT - 275 (Type II Short 0.75)			
Input Power Designator	3000K	4000K	5700K
	I / M	16216	17071

\* Initial delivered lumens at 25°C (77°F). Actual production yield may vary between -4 and +10% of initial delivered lumens

### 210 - Type II Short 1.0



cd/klm  
 C0 - C180 C90 - C270 C17.5 - C197.5

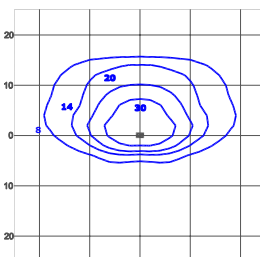
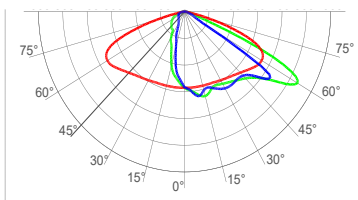
Test Report #: PL11704-001

lux  
 XSPE02210140K  
 Mounting Height: 10m

LUMEN OUTPUT - 210 (Type II Short 1.0)			
Input Power Designator	3000K	4000K	5700K
	I / M	16219	17074

\* Initial delivered lumens at 25°C (77°F). Actual production yield may vary between -4 and +10% of initial delivered lumens

### 2SH - Type II Short



cd/klm  
 C0 - C180 C90 - C270 C45 - C225

Test Report #: PL11704-011

lux  
 XSPE022SH140K  
 Mounting Height: 10m

LUMEN OUTPUT - 2SH (Type II Short)			
Input Power Designator	3000K	4000K	5700K
	I / M	16048	16895

\* Initial delivered lumens at 25°C (77°F). Actual production yield may vary between -4 and +10% of initial delivered lumens

# XSP High Output Series

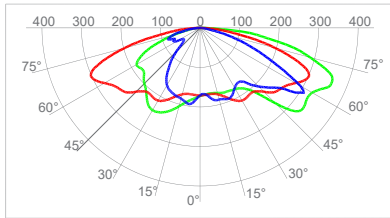
XSP2™ High Output LED Street/Area Luminaire - Double Module



## Photometry

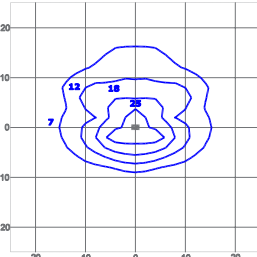
All published luminaire photometric testing performed to IESNA LM-79-08 standards by an external laboratory. To obtain an IES file specific to your project consult: [www.creelighting-europe.com](http://www.creelighting-europe.com)

### 3SH - Type III Short



cd/klm  
 C0 - C180 C90 - C270 C30 - C210

Test Report #: PL11704-012

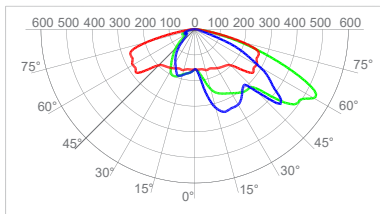


lux  
 XSPE023SHI40K  
 Mounting Height: 10m

LUMEN OUTPUT - 3SH (Type III Short)			
Input Power Designator	3000K	4000K	5700K
	I / M	15064	15859

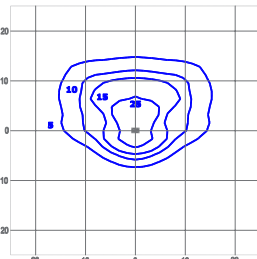
\* Initial delivered lumens at 25°C (77°F). Actual production yield may vary between -4 and +10% of initial delivered lumens

### 3ME - Type II Medium



cd/klm  
 C0 - C180 C90 - C270 C45 - C225

Test Report #: PL11704-013

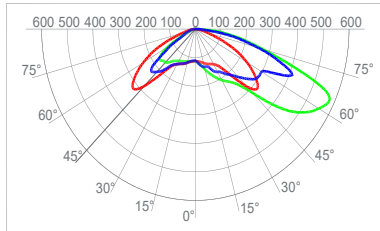


lux  
 XSPE023MEI40K  
 Mounting Height: 10m

LUMEN OUTPUT - 3ME (Type II Medium)			
Input Power Designator	3000K	4000K	5700K
	I / M	15803	16636

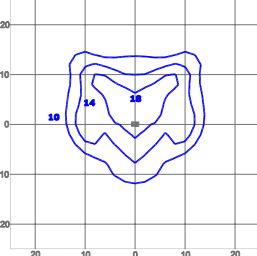
\* Initial delivered lumens at 25°C (77°F). Actual production yield may vary between -4 and +10% of initial delivered lumens

### 4ME - Type IV Medium



cd/klm  
 C0 - C180 C90 - C270 C45 - C225

Test Report #: PL11704-014



lux  
 XSPE024MEI40K  
 Mounting Height: 10m

LUMEN OUTPUT - 4ME (Type IV Medium)			
Input Power Designator	3000K	4000K	5700K
	I / M	15821	16655

\* Initial delivered lumens at 25°C (77°F). Actual production yield may vary between -4 and +10% of initial delivered lumens

© 2022 Cree Lighting Europe S.p.A. All rights reserved. For informational purposes only. Content is subject to change. Patent [www.creelighting.com/patents](http://www.creelighting.com/patents). Cree® and the Cree logo are registered trademarks and the Cree SmartCast Technology Logo is a trademark of Cree, Inc.

Advanced Lighting Technologies Australia Inc  
 Advanced Lighting Technologies New Zealand Ltd  
 Advanced Lighting Technologies Asia Pte Ltd

Australia  
 New Zealand  
 Singapore

+61 3 9800 5600  
 +64 09 415 6332  
 +65 6844 2338  
[www.adlt.com.au](http://www.adlt.com.au)  
[www.adlt.co.nz](http://www.adlt.co.nz)  
[www.adlt.com.sg](http://www.adlt.com.sg)

Rev. Date: 20 October 2022