

# StreetMaster S

StreetMaster S - LED Street/Area Luminaire

Rev. Date: December 17th 2024

## Product Description

The StreetMaster Series is designed following principles of unparalleled energy efficiency, environmental sustainability, innovative modular design, extended service life and rapid installation. This series represents the optimal lighting solution for any context, offering a modular system that includes two product sizes, a wide range of optics, options for dimming autonomous luminous flux and Zhaga connectivity.

The innovative adjustable joint allows mounting on 60mm outer diameter poles or stands, with an adjustability of 5° increments. Tilt adjustment is easy, made from the outside without the need to open the cover. Due to its high efficacy, the StreetMaster Series is designed to replace even first-generation LED lighting fixtures, ensuring a quick return on investment.

The design also reflects the 'less is more' philosophy, emphasizing simplicity and effectiveness.

**Applications:** Urban and suburban roads, walkways, and parking lots.

## Performance Summary

**Efficacy:** up to 180lm/W

**Initial Color Consistency:** 4 Step SDCM

**System Lumen Output:** Up to 10000 lm

**Limited Warranty:** 5 years on luminaire\*

\*Extended warranty (up to 10 years) available on approved projects. Contact ADLT for further information.



## Ordering information

Eg: SPSA-2-K10-B-60-407-^ - A - S - FX - S - S - 00

| SPSA                                | - 2                                       | - K10                               | - B                   | - 60          | - 407 | - ^              | - A           | - S         | - FX                        | - S                          | - S                   | - 00                     |                         |
|-------------------------------------|---|-------------------------------------|-----------------------|---------------|-------|------------------|---------------|-------------|-----------------------------|------------------------------|-----------------------|--------------------------|-------------------------|
| Product                             | Mounting                                  | Optic                               | Light engine          | Lumen output  | CCT   | Insulation Class | Voltage       | Finish      | Option                      | Variant                      | Protection            | Cable Length             |                         |
| SPSA<br>StreetMaster<br>Small       | 2<br>Horiz/vert tenon<br>60/42mm OD       | K07<br>NanoComfort<br>Narrow Street | A<br>Up to<br>4200lm  | 10 - 1000lm   | 227   | +<br>Class I     | A<br>220-240V | S<br>Silver | FX<br>Fixed<br>Output       | S<br>No socket/<br>No sensor | S<br>By Driver        | 00<br>No cable           |                         |
|                                     |   |                                     |                       | 20 - 2000lm   | 2200K |                  |               |             |                             |                              |                       |                          |                         |
| SUSA<br>StreetMaster<br>Small LCu   | 3<br>Vert tenon<br>76mm OD                | K08<br>NanoComfort<br>Narrow Street | B<br>Up to<br>7000lm  | 30 - 3000lm   | 277   | ^<br>Class II    | A<br>220-240V | S<br>Silver | M1<br>Virtual<br>Midnight 1 | Z<br>Zhaga D4i<br>socket     | U<br>10 kV            | SF*<br>Standard<br>+Fuse | A1<br>Exit cable<br>1 m |
|                                     |   |                                     |                       | 36 - 3600lm   | 2700K |                  |               |             |                             |                              |                       |                          |                         |
|                                     |   |                                     |                       | 42 - 4200lm   | 3000K |                  |               |             |                             |                              |                       |                          |                         |
|                                     |   |                                     |                       | 50 - 5000lm   | 307   |                  |               |             |                             |                              |                       |                          |                         |
|                                     |   |                                     |                       | 55 - 5500lm   | 3000K |                  |               |             |                             |                              |                       |                          |                         |
|                                     |   |                                     |                       | 60 - 6000lm   | 307   |                  |               |             |                             |                              |                       |                          |                         |
|                                     |   |                                     |                       | 65 - 6500lm   | 407   |                  |               |             |                             |                              |                       |                          |                         |
|                                     |   |                                     |                       | 70 - 7000lm   | 4000K |                  |               |             |                             |                              |                       |                          |                         |
|                                     |   |                                     |                       | 80 - 8000lm   | 407   |                  |               |             |                             |                              |                       |                          |                         |
|                                     |   |                                     |                       | 90 - 9000lm   | 4000K |                  |               |             |                             |                              |                       |                          |                         |
| 100 - 10000lm                       | 407                                       |                                     |                       |               |       |                  |               |             |                             |                              |                       |                          |                         |
| K10<br>NanoComfort<br>Medium Street | 4<br>Extended<br>tilt range<br>60/42mm OD | K09<br>NanoComfort<br>Medium Street | C<br>Up to<br>10000lm | 100 - 10000lm | 407   | -                | A<br>220-240V | S<br>Silver | M2<br>Virtual<br>Midnight 2 | N<br>Nema<br>socket          | UF*<br>10 kV<br>+Fuse | -                        |                         |
|                                     |   |                                     |                       | 100 - 10000lm | 407   |                  |               |             |                             |                              |                       |                          |                         |
|                                     |   |                                     |                       | 100 - 10000lm | 407   |                  |               |             |                             |                              |                       |                          |                         |
|                                     |   |                                     |                       | 100 - 10000lm | 407   |                  |               |             |                             |                              |                       |                          |                         |
|                                     |   |                                     |                       | 100 - 10000lm | 407   |                  |               |             |                             |                              |                       |                          |                         |
|                                     |   |                                     |                       | 100 - 10000lm | 407   |                  |               |             |                             |                              |                       |                          |                         |
|                                     |   |                                     |                       | 100 - 10000lm | 407   |                  |               |             |                             |                              |                       |                          |                         |
| K11<br>NanoComfort<br>Medium Street | 5<br>Extended<br>tilt range<br>76mm OD    | K10<br>NanoComfort<br>Medium Street | C<br>Up to<br>10000lm | 100 - 10000lm | 407   | -                | A<br>220-240V | S<br>Silver | -                           | -                            | -                     | -                        |                         |
|                                     |   |                                     |                       | 100 - 10000lm | 407   |                  |               |             |                             |                              |                       |                          |                         |
|                                     |   |                                     |                       | 100 - 10000lm | 407   |                  |               |             |                             |                              |                       |                          |                         |
|                                     |   |                                     |                       | 100 - 10000lm | 407   |                  |               |             |                             |                              |                       |                          |                         |
|                                     |   |                                     |                       | 100 - 10000lm | 407   |                  |               |             |                             |                              |                       |                          |                         |
| K12<br>NanoComfort<br>Broad Street  | 5<br>Extended<br>tilt range<br>76mm OD    | K11<br>NanoComfort<br>Medium Street | C<br>Up to<br>10000lm | 100 - 10000lm | 407   | -                | A<br>220-240V | S<br>Silver | -                           | -                            | -                     | -                        |                         |
|                                     |   |                                     |                       | 100 - 10000lm | 407   |                  |               |             |                             |                              |                       |                          |                         |
|                                     |   |                                     |                       | 100 - 10000lm | 407   |                  |               |             |                             |                              |                       |                          |                         |
|                                     |   |                                     |                       | 100 - 10000lm | 407   |                  |               |             |                             |                              |                       |                          |                         |
|                                     |   |                                     |                       | 100 - 10000lm | 407   |                  |               |             |                             |                              |                       |                          |                         |
| 100<br>Medium Street                | 5<br>Extended<br>tilt range<br>76mm OD    | K12<br>NanoComfort<br>Broad Street  | C<br>Up to<br>10000lm | 100 - 10000lm | 407   | -                | A<br>220-240V | S<br>Silver | -                           | -                            | -                     | -                        |                         |
|                                     |   |                                     |                       | 100 - 10000lm | 407   |                  |               |             |                             |                              |                       |                          |                         |
|                                     |   |                                     |                       | 100 - 10000lm | 407   |                  |               |             |                             |                              |                       |                          |                         |
|                                     |   |                                     |                       | 100 - 10000lm | 407   |                  |               |             |                             |                              |                       |                          |                         |
|                                     |   |                                     |                       | 100 - 10000lm | 407   |                  |               |             |                             |                              |                       |                          |                         |
| 125<br>Broad Street                 | 5<br>Extended<br>tilt range<br>76mm OD    | K12<br>NanoComfort<br>Broad Street  | C<br>Up to<br>10000lm | 100 - 10000lm | 407   | -                | A<br>220-240V | S<br>Silver | -                           | -                            | -                     | -                        |                         |
|                                     |   |                                     |                       | 100 - 10000lm | 407   |                  |               |             |                             |                              |                       |                          |                         |
|                                     |   |                                     |                       | 100 - 10000lm | 407   |                  |               |             |                             |                              |                       |                          |                         |
|                                     |   |                                     |                       | 100 - 10000lm | 407   |                  |               |             |                             |                              |                       |                          |                         |
|                                     |   |                                     |                       | 100 - 10000lm | 407   |                  |               |             |                             |                              |                       |                          |                         |
| 150<br>Wide Street                  | 5<br>Extended<br>tilt range<br>76mm OD    | K12<br>NanoComfort<br>Broad Street  | C<br>Up to<br>10000lm | 100 - 10000lm | 407   | -                | A<br>220-240V | S<br>Silver | -                           | -                            | -                     | -                        |                         |
|                                     |   |                                     |                       | 100 - 10000lm | 407   |                  |               |             |                             |                              |                       |                          |                         |
|                                     |   |                                     |                       | 100 - 10000lm | 407   |                  |               |             |                             |                              |                       |                          |                         |
|                                     |   |                                     |                       | 100 - 10000lm | 407   |                  |               |             |                             |                              |                       |                          |                         |
|                                     |   |                                     |                       | 100 - 10000lm | 407   |                  |               |             |                             |                              |                       |                          |                         |
| 200<br>Extra Wide<br>Street         | 5<br>Extended<br>tilt range<br>76mm OD    | K12<br>NanoComfort<br>Broad Street  | C<br>Up to<br>10000lm | 100 - 10000lm | 407   | -                | A<br>220-240V | S<br>Silver | -                           | -                            | -                     | -                        |                         |
|                                     |   |                                     |                       | 100 - 10000lm | 407   |                  |               |             |                             |                              |                       |                          |                         |
|                                     |   |                                     |                       | 100 - 10000lm | 407   |                  |               |             |                             |                              |                       |                          |                         |
|                                     |   |                                     |                       | 100 - 10000lm | 407   |                  |               |             |                             |                              |                       |                          |                         |
|                                     |   |                                     |                       | 100 - 10000lm | 407   |                  |               |             |                             |                              |                       |                          |                         |
| P05<br>Pedestrian<br>Narrow         | 5<br>Extended<br>tilt range<br>76mm OD    | K12<br>NanoComfort<br>Broad Street  | C<br>Up to<br>10000lm | 100 - 10000lm | 407   | -                | A<br>220-240V | S<br>Silver | -                           | -                            | -                     | -                        |                         |
|                                     |   |                                     |                       | 100 - 10000lm | 407   |                  |               |             |                             |                              |                       |                          |                         |
|                                     |   |                                     |                       | 100 - 10000lm | 407   |                  |               |             |                             |                              |                       |                          |                         |
|                                     |   |                                     |                       | 100 - 10000lm | 407   |                  |               |             |                             |                              |                       |                          |                         |
|                                     |   |                                     |                       | 100 - 10000lm | 407   |                  |               |             |                             |                              |                       |                          |                         |
| P25<br>Pedestrian<br>Extra Wide     | 5<br>Extended<br>tilt range<br>76mm OD    | K12<br>NanoComfort<br>Broad Street  | C<br>Up to<br>10000lm | 100 - 10000lm | 407   | -                | A<br>220-240V | S<br>Silver | -                           | -                            | -                     | -                        |                         |
|                                     |   |                                     |                       | 100 - 10000lm | 407   |                  |               |             |                             |                              |                       |                          |                         |
|                                     |   |                                     |                       | 100 - 10000lm | 407   |                  |               |             |                             |                              |                       |                          |                         |
|                                     |   |                                     |                       | 100 - 10000lm | 407   |                  |               |             |                             |                              |                       |                          |                         |
|                                     |   |                                     |                       | 100 - 10000lm | 407   |                  |               |             |                             |                              |                       |                          |                         |

\*Fuseholder with 5x20 8A rit. fuse on the input (line only)

Standard cable cross-section 1mm<sup>2</sup>. Other cross-sections available on request.

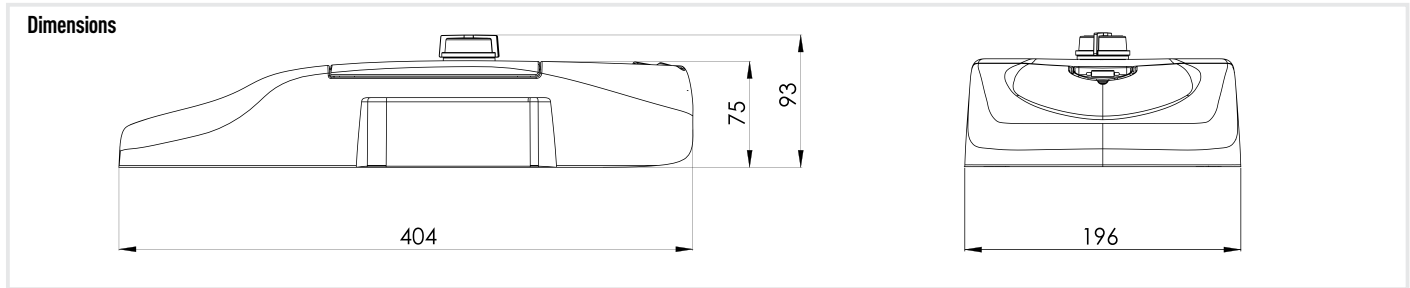
| ADAPTER         |                                   |
|-----------------|-----------------------------------|
| KIT-SPS-AP76-V0 | Fitter kit to mount to 76mm tenon |

| LIGHT SHIELDS |              |
|---------------|--------------|
| SPS-BLSB      | Front shield |
| SPS-BLSB      | Right shield |
| SPS-BLSB      | Left shield  |
| SPS-BLSB      | Back shield  |

# StreetMaster S

StreetMaster S - LED Street/Area Luminaire

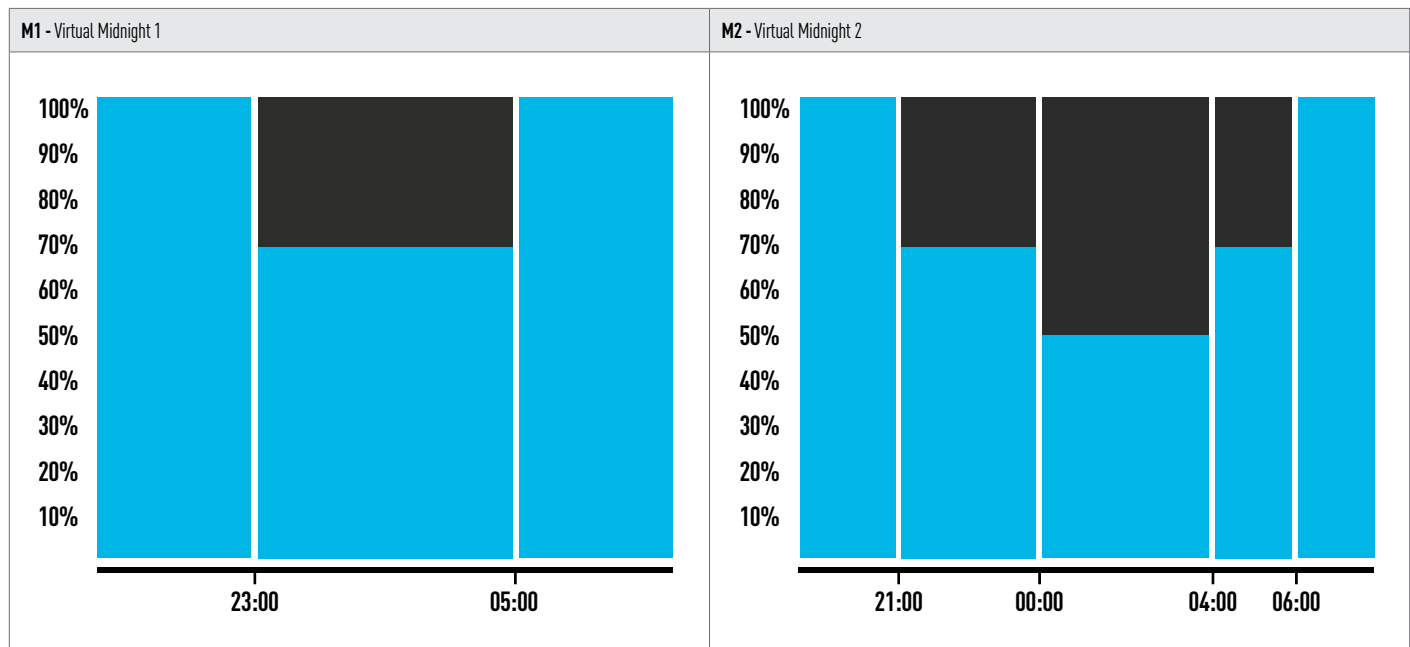
Rev. Date: December 17th 2024



| Light engine | System Lumen Output (lm) | Power (W) | Efficacy (lm/W) |
|--------------|--------------------------|-----------|-----------------|
| A            | 1018                     | 7,1       | 143             |
|              | 2030                     | 13,5      | 150             |
|              | 3000                     | 18,7      | 160             |
|              | 3633                     | 21,9      | 166             |
|              | 4224                     | 24,9      | 170             |
| B            | 5053                     | 30,4      | 166             |
|              | 5541                     | 33,1      | 167             |
|              | 6029                     | 35,7      | 169             |
|              | 6517                     | 38,3      | 170             |
|              | 7005                     | 41,0      | 171             |
| C            | 7981                     | 48,8      | 164             |
|              | 9039                     | 55,1      | 164             |
|              | 10015                    | 60,9      | 164             |

Note<sup>1</sup>: Data above for 4000K CRI70. Conversion factor for 3000K CRI70 = 0.95 | 2700K CRI70 = 0.91 | 2200K CRI70 = 0.79

Note<sup>2</sup>: lux and power data are typical values at 25°C ambient temperature. These values are subject to a tolerance of ± 7%. In order to facilitate product updates, Cree Lighting Europe reserves the right to make changes without prior notice



## Virtual Midnight

This independent stand-alone system requires no additional wiring; it is integrated into the luminaire and requires no intervention from the installer. A system that is reliable and easy to set, as the adjustment follows pre-defined steps. Virtual Midnight offers excellent results in terms of savings: the device updates automatically according to the system's switch-on and switch-off times. Most energy saving regulations - GPP and the like - require maximum light output during the first and last hours of operation, which are generally the busiest, and a reduction of at least 30% during the central hours of the night. Through a self-learning process, the microprocessor determines the central point - the so-called virtual midnight - between the time the system is switched on (sunset) and the time it is switched off (dawn). The process is carried out over three consecutive days with regular on/off cycles. Virtual midnight is the reference point for switching the setback intervals according to the desired profile.

# StreetMaster S

StreetMaster S - LED Street/Area Luminaire

Rev. Date: December 17th 2024

## FEATURES

- Available with **NanoComfort**<sup>®</sup> precision optical system
- System lumen output up to 10000lm
- Zhaga Book 15 compliant LED module efficiency (excluding optical system):  $\geq 220$  lm/W
- Luminaire efficiency (including optical losses): up to 180 lm/W
- CCT: 4000K Ra70, 3000K Ra70, 2700K Ra70, 2200K Ra70
- CRI Standard min. 70
- Initial Chromatic Selection:  $\leq 4$ -Step MacAdam ellipse or  $\Delta u'v' \leq 0.003$  (LM80:08)
- Luminous flux maintenance factor: L90B10  $> 100,000$  hours  $T_a=25^\circ\text{C}$
- Optical compartment and wiring compartment ingress protection: IP66 (IEC 60529)
- Optical compartment and wiring compartment impact resistance: IK10 (EN 62262)
- Overvoltage protection: up to 10kV CM/DM according to EN 61000-4-5 and EN 61547
- Driver equipped with over-temperature protection for optimal performance and safety
- Power factor: up to 0.98 at full load
- Operating temperature:  $-40^\circ\text{C}$  up to  $+50^\circ\text{C}$
- Control options: Virtual Midnight, D4i
- Available with fuse, 20mm Zhaga Book 18 connector and NEMA socket
- Backlight control accessory available on request for selected lenses
- Front, side & rear light shield accessories available
- SPD with LED fault indicator (Standard in class I, available on request in class II)
- Weight: 3.2 kg
- Lateral windage area:  $0.03\text{ m}^2$ , maximum windage area:  $0.07\text{ m}^2$

## CONSTRUCTION AND MATERIALS

- Die-cast aluminum body EN 47100 (copper content  $< 0.7\%$ ). Aluminum alloy EN AB 44300 (copper content  $< 0.1\%$ ) available as an option.
- Power supply compartment accessible without the use of tools
- Ultra-clear 4mm tempered glass with anti-reflective coating
- Replaceable PMMA lenses
- Replaceable LED board equipped with ESD protection
- Cable type H05RN-F (Cable length up to 15m)
- Easy installation: wiring compartment accessible without tools, no need to open it for installation if the fixture is configured with protruding cable
- Convenience in routine and extraordinary maintenance: accessible power supply compartment; lenses and LEDs easily removable and replaceable using a single tool
- Luminaire assembled without the use of adhesives, fully demountable and recyclable
- Fixed mounting on  $42/60/76\text{mm}$  diameter vertical poles or stands and adjustable mounting in  $5^\circ$  increments (from  $0^\circ$  to  $-15^\circ$ ) on  $42/60\text{mm}$  horizontal tenons. Accessory available to extend the tilt range to  $-20^\circ/+20^\circ$ .

## WARRANTY AND CERTIFICATIONS

- Warranty: 5 years / 10 years on request\*
- CE / CB / RoHS / ENEC / ENEC+
- Compliant to: EN 60598-1, EN 60598-2-3
- TM66 rated with an excellent circularity
- Meets CAM requirements
- Exempt risk class (EN 62471)
- Compliant with vibration test in accordance with IEC 60068-2-6 severity levels
- Lead-free powder coatings with excellent exterior durability, conforms to the requirements:
  - Adhesion - test compliant with ISO 2409
  - Salt spray - test NSS compliant with ISO 9227
  - Accelerated Weathering - test UV compliant with ISO 16474-3 (ex ISO 11507)
  - Constant humidity - test compliant with ISO 6270-1

\*Extended warranty (up to 10 years) available on approved projects. Contact ADLT for further information.

# StreetMaster S

StreetMaster S - LED Street/Area Luminaire

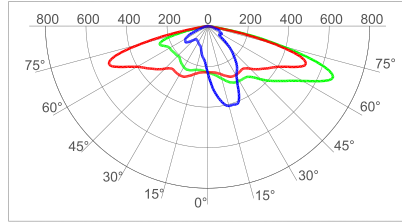


Rev. Date: December 17th 2024

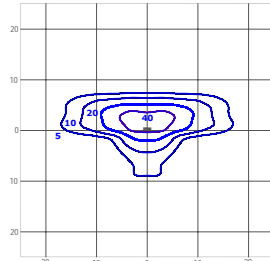
## Photometry

All published luminaire photometric testing performed by an external certified ISO 17025 laboratory.  
To obtain an IES file specific to your project consult: [www.creelighting-europe.com](http://www.creelighting-europe.com)

### K07 - Narrow Street



cd/klm  
— C0 - C180    — C90 - C270    — C05 - C185

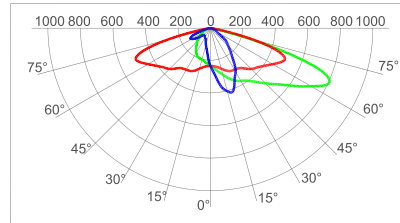


lux

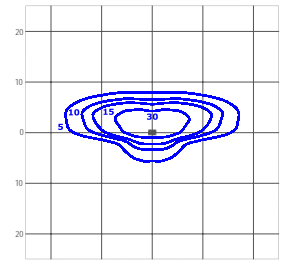
Luminous Intensity Class G\*3  
Glare Index D6

SPSA-2-K07-C-80-407  
Mounting Height: 6m

### K08 - Narrow Street



cd/klm  
— C0 - C180    — C90 - C270    — C17 - C197

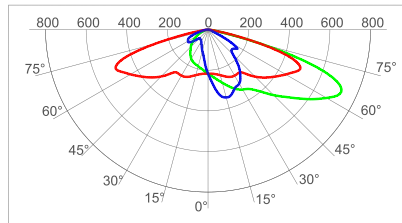


lux

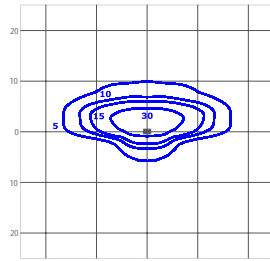
Luminous Intensity Class G\*3  
Glare Index D5

SPSA-2-K08-C-80-407  
Mounting Height: 6m

### K09 - Medium Street



cd/klm  
— C0 - C180    — C90 - C270    — C16 - C196

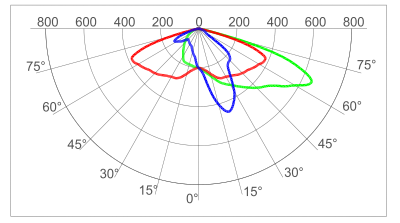


lux

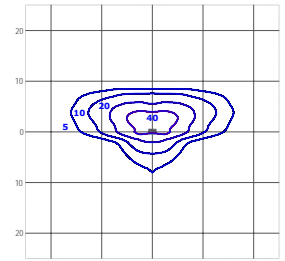
Luminous Intensity Class G\*3  
Glare Index D5

SPSA-2-K09-C-80-407  
Mounting Height: 6m

### K10 - Medium Street



cd/klm  
— C0 - C180    — C90 - C270    — C20 - C200

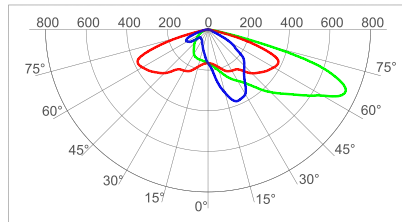


lux

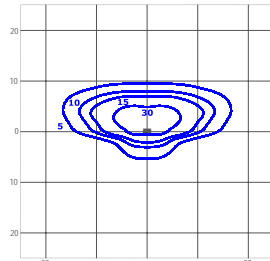
Luminous Intensity Class G\*3  
Glare Index D5

SPSA-2-K10-C-80-407  
Mounting Height: 6m

### K11 - Medium Street



cd/klm  
— C0 - C180    — C90 - C270    — C19 - C199

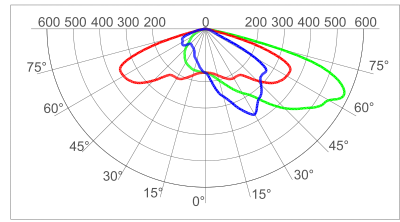


lux

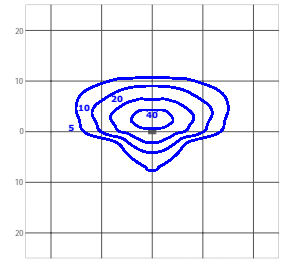
Luminous Intensity Class G\*3  
Glare Index D5

SPSA-2-K11-C-80-407  
Mounting Height: 6m

### K12 - Broad Street



cd/klm  
— C0 - C180    — C90 - C270    — C20 - C200

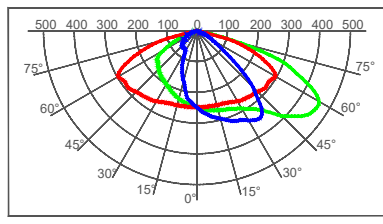


lux

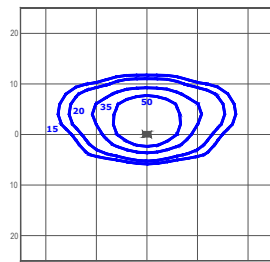
Luminous Intensity Class G\*3  
Glare Index D5

SPSA-2-K12-C-80-407  
Mounting Height: 6m

### 100 - Medium Street



cd/klm  
— C0 - C180    — C90 - C270    — C22.5 - C202.5

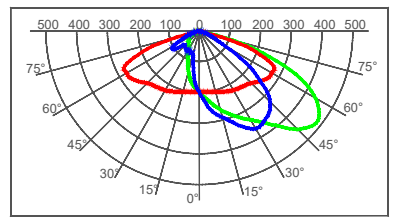


lux

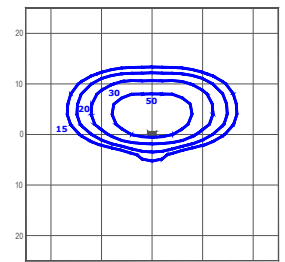
Luminous Intensity Class G\*4  
Glare Index D5

SPSA-2-100-C-80-407  
Mounting Height: 6m

### 125 - Broad Street



cd/klm  
— C0 - C180    — C90 - C270    — C32.5 - C212.5



lux

Luminous Intensity Class G\*4  
Glare Index D6

SPSA-2-125-C-80-407  
Mounting Height: 6m



Advanced Lighting Technologies Australia Inc  
Advanced Lighting Technologies New Zealand Ltd  
Advanced Lighting Technologies Asia Pte Ltd

Australia  
New Zealand  
Singapore

+61 3 9800 5600  
+64 9 415 6332  
+65 6844 2338

adlt.com.au  
adlt.co.nz  
adlt.com.sg

# StreetMaster S

StreetMaster S - LED Street/Area Luminaire

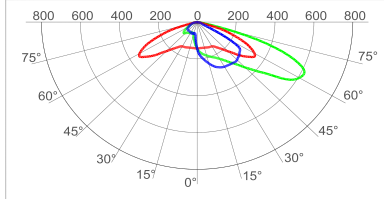


Rev. Date: December 17th 2024

## Photometry

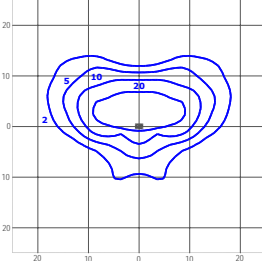
All published luminaire photometric testing performed by an external certified ISO 17025 laboratory.  
To obtain an IES file specific to your project consult: [www.creelighting-europe.com](http://www.creelighting-europe.com)

### 150 - Wide Street



cd/klm  
— C0 - C180    — C90 - C270    — C27.5 - C207.5

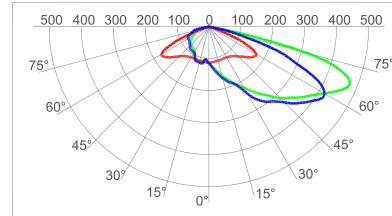
Luminous Intensity Class G\*3  
Glare Index D5



lux

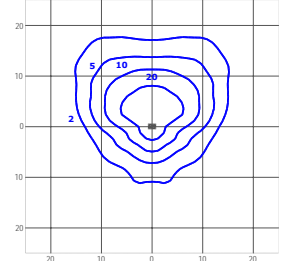
SPSA-2-150-C-80-407  
Mounting Height: 6m

### 200 - Extra Wide Street



cd/klm  
— C0 - C180    — C90 - C270    — C55 - C235

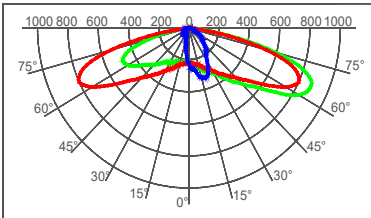
Luminous Intensity Class G\*3  
Glare Index D5



lux

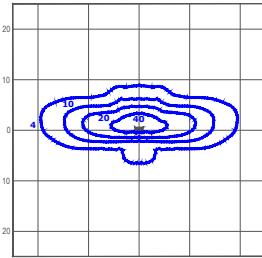
SPSA-2-200-C-80-407  
Mounting Height: 6m

### P05 - Pedestrian Narrow



cd/klm  
— C0 - C180    — C90 - C270    — C9 - C189

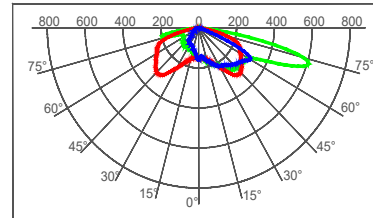
Luminous Intensity Class G\*1  
Glare Index D4



lux

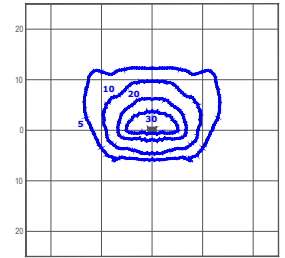
SPSA-2-P05-C-80-407  
Mounting Height: 6m

### P25 - Pedestrian Extra Wide



cd/klm  
— C0 - C180    — C90 - C270    — C45 - C225

Luminous Intensity Class G\*0  
Glare Index D4



lux

SPSA-2-P25-C-80-407  
Mounting Height: 6m

© 2024 Cree Lighting Europe S.p.A. . All rights reserved. For informational purposes only.  
Content is subject to change. Patent [www.creelighting.com/patents](http://www.creelighting.com/patents). Cree® and the Cree logo are registered trademarks and the Cree SmartCast Technology Logo is a trademark of Cree, Inc.



Advanced Lighting Technologies Australia Inc  
Advanced Lighting Technologies New Zealand Ltd  
Advanced Lighting Technologies Asia Pte Ltd

Australia  
New Zealand  
Singapore

+61 3 9800 5600  
+64 9 415 6332  
+65 6844 2338

adlt.com.au  
adlt.co.nz  
adlt.com.sg