

STELLAR Series

LED lighting fixture for high bay applications



CREE LIGHTING

Product Description

The new Cree lighting high bay Stellar, it is a small and thin luminaire with attractive appearance. With a lightweight body construction, high impact resistance and high - efficient thermal conduction, Stellar has a simple and compact aesthetic that makes it suitable for different applications. With 4 different sizes (small - medium - large end extra-large) it is flexible to every need.

Applications: Industrial, sport, warehouse, retail and grocery spaces.

Performance Summary

Integrated Precision Optics available in three distributions (60°; 90°; 120°)

IP Rating: IP65 / **IK Rating:** IK08

Efficacy: up to 140 lm/W

Limited Warranty: 5 years

Extended warranty may be available on certain projects. Contact ADLTA for more information.



*Shown with optional aluminium reflector

Ordering Information

EX: STL-A-NM-60-13L-408-+-24-45-WH-DIM + STL-HK-13L

STL	- A	- NM	- 60	- 13L	- 408	- +	- 24	- 45	- WH	- DIM
Product	Version	Mounting	Optic	Lumen Package	CCT	Insulation Class	Voltage	Operation Temperature	Finish	Control Option
STL Stellar High Bay	A	NM Eyebolt	60 60°	13L SMALL	308* 30K 80CRI	+ Class 1	24 220-240V	45 -35° ≈ +45°	WH White	DIM 1-10V
			90 90°	20L MEDIUM	408 40K 80CRI					DL DALI
			12 120°	27L LARGE	508 50K 80CRI					
				31L EXTRA-LARGE						

* On request with MOQ Ordering information is for reference only. Some product configurations are not available. Please consult spec sheets for specific product availability and for further details.

MOUNTING ACCESSORY INFORMATION

HOOK (STAINLESS STEEL)

Only for Dim Version 13/20/27/31L

Only for DALI Version 13/20/27L

STL-HK-13L

HOOK (STAINLESS STEEL)

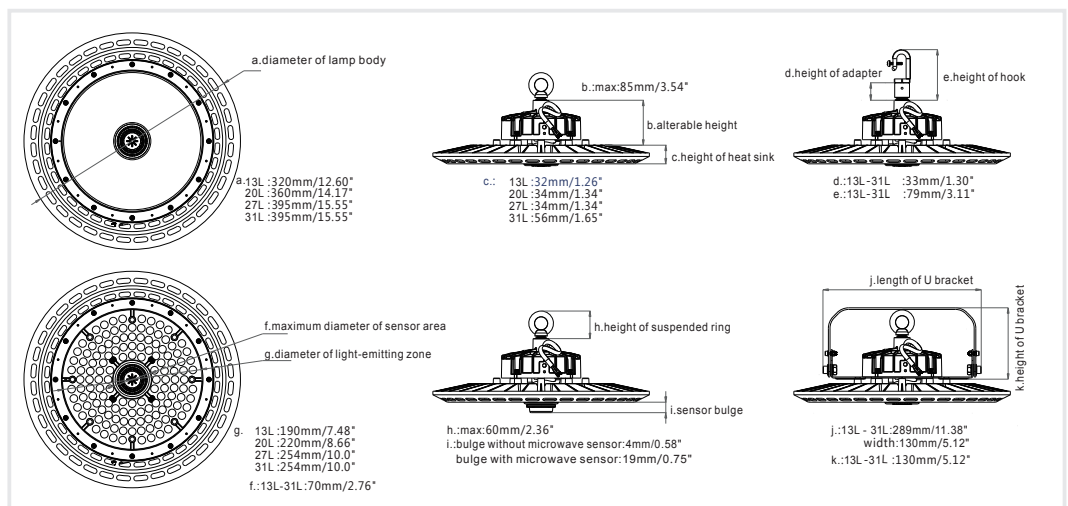
Only for DALI Version 31L

STL-HK-27L

UNIVERSAL U BRACKET

UB - Universal Bracket

STL-UB



STELLAR Series

LED lighting fixture for high bay applications



CREE LIGHTING

FEATURES

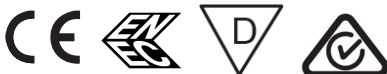
- Lumen output: 13000 – 33000lm
- System efficacy: up to 140lm/W
- CRI Minimum 80
- CCT: 3000K (on request), 4000K, 5000K
- Input Voltage: 220-240V
- Power factor: Up to > 0.96 at full load
- Surge protection: 6kV CM / 4kV DM surge immunity according to EN 61000-4-5 and EN 61547
- Operative temperature: -35°C up to +45°C
- Insulation class: Class I
- Enclosure rated IP65
- Impact resistance IK08
- Control options: Dimming 1-10V, DALI
- Microwave sensor available with remote control
- Mounting Options: Eyebolt, Hook, Universal U Bracket with step of 30°
- Accessories: Reflector, Microwave sensor, infrared remote control, lenses, Steel chain and safety rope
- MacAdam Step ≤ 3 SDCM
- UGR max value: 19 for 60°; 25 for 90°; 28 for 120°
- Lifetime according to TM-21 and IEC62717:
 - $L_{80B_{10}}$ @ 25°C: > 95,000 hrs

CONSTRUCTION AND MATERIALS

- Die cast aluminum alloy treated with powder coating for anti-corrosion performance
- Supplied with Flex & Plug as standard.

WARRANTY AND CERTIFICATIONS

- Limited Warranty: 5 years
- CE / RoHs / ENEC / RCM / CCC / D
- Risk group exempt
- Compliant to: EN 60598-1; EN 60598-2-1
- Energy labels are available for download in the [certifications](#) section of the product page



ELECTRICAL DATA*

Input Power Designator	System Watts	Total Current	Power Factor
		@230V, 50Hz	
13L	95W	0,43 A	0,96
20L	145W	0,66 A	0,96
27L	193W	0,87 A	0,96
31L	228W	1,03 A	0,96

* Electrical data at 25°C (77°F)

ACCESSORIES

Aluminum Reflector (white outside/aluminium inside) Input Power 13L	STL-LS-13L
Aluminum Reflector (white outside/aluminium inside) Input Power 20L	STL-LS-20L
Aluminum Reflector (white outside/aluminium inside) Input Power 27/31L	STL-LS-27L
Clear Reflector (transparent acrylic) Input Power 13L	STL-CR-13L
Clear Reflector (transparent acrylic) Input Power 20L	STL-CR-20L
Clear Reflector (transparent acrylic) Input Power 27/31L	STL-CR-27L
Safety Rope 1,5M	STL-SR
Stainless steel chain 1,5M	STL-CH-001
Microwave Sensor*	STL-DIS-SS
Infrared remote controller	STL-DIS-CNT
Ceiling Mount sensor HMW34	HB-HF-DL-IP65-CM-SS-HYHMMW34
HB Sensor mounting kit	HB-STL-BR-HYHMMW34
Remote controller per HB sensor	HB- CNT- HYHRC11

*Infrared remote control not included, ordered separately.

PRODUCT WEIGHT

13L	2.8 kg
20L	3.85 kg
27L	4.2 kg
31L	5.95 kg

PRODUCT WEIGHT WITH REFLECTOR

13L	3.26 kg
20L	4.38 kg
27L	4.8 kg
31L	6.55 kg

STELLAR Series

LED lighting fixture for high bay applications

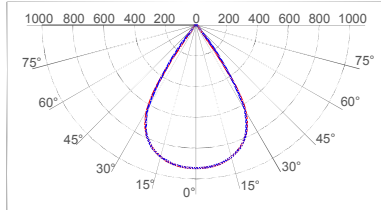


Photometry

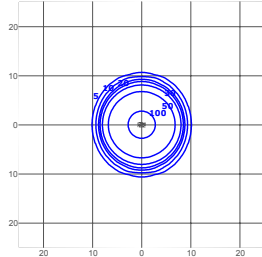
All published luminaire photometric testing performed to IESNA LM-79-08 standards by an external laboratory.

To obtain an IES file specific to your project consult: www.creelighting-europe.com. To obtain product-related flows, with reflector, please contact Cree Lighting Europe.

60° - NARROW BEAM



cd/klm
 — C0 - C180 — C90 - C270

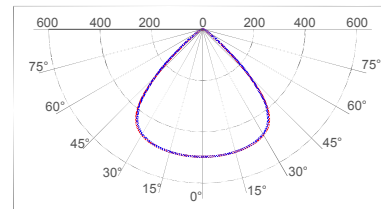


lux
 STL-A-NM-60-31L-408-+-24-45-WH-DIM
 Mounting Height: 12m

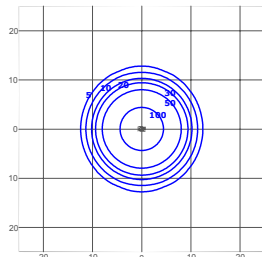
LUMEN OUTPUT -60°			
Input Power Designator	3000K**	4000K	5000K
	Initial Delivered Lumens*	Initial Delivered Lumens*	Initial Delivered Lumens*
13L	12100	12960	13224
20L	18553	19871	20277
27L	24805	26567	27109
31L	29895	32019	32672

* Initial delivered lumens at 25°C (77°F). Actual production yield may vary between -4 and +10% of initial delivered lumens
 ** On request with MOQ

90° - MEDIUM BEAM



cd/klm
 — C0 - C180 — C90 - C270

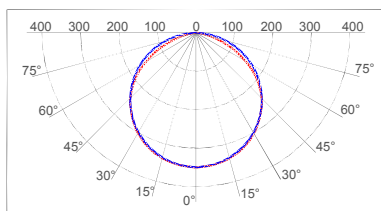


lux
 STL-A-NM-90-27L-408-+-24-45-WH-DIM
 Mounting Height: 10m

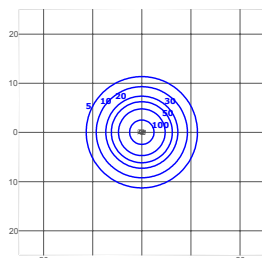
LUMEN OUTPUT -90°			
Input Power Designator	3000K**	4000K	5000K
	Initial Delivered Lumens*	Initial Delivered Lumens*	Initial Delivered Lumens*
13L	12164	13028	13294
20L	18651	19976	20384
27L	24935	26707	27252
31L	30052	32187	32844

* Initial delivered lumens at 25°C (77°F). Actual production yield may vary between -4 and +10% of initial delivered lumens
 ** On request with MOQ

120° - WIDE BEAM



cd/klm
 — C0 - C180 — C90 - C270



lux
 STL-A-NM-12-13L-408-+-24-45-WH-DIM
 Mounting Height: 6m

LUMEN OUTPUT -120°			
Input Power Designator	3000K**	4000K	5000K
	Initial Delivered Lumens*	Initial Delivered Lumens*	Initial Delivered Lumens*
13L	12291	13164	13433
20L	18846	20185	20597
27L	25197	26986	27537
31L	30367	32524	33188

* Initial delivered lumens at 25°C (77°F). Actual production yield may vary between -4 and +10% of initial delivered lumens
 ** On request with MOQ

© 2023 Cree Lighting Europe S.p.A., a Company of ENERGY EFFICIENT LIGHTING GROUP. All rights reserved.
 For informational purposes only. Content is subject to change. Cree® and Cree Lighting® logo are registered trademarks of SMART Global Holdings, Inc.