

# URBAN Series

MINIMAL - LED Lantern



**CREE** LIGHTING

## Product Description

The new Cree Lighting fixture is characterized by an essential design and is designed for the decoration of urban centers. Available with post top mounting, its design represents the ideal solution for historical centers, squares, parks and pedestrian areas.

**Applications:** historic urban, squares and parks, residential roadways and walkways.

## Performance Summary

<b>IK Rating:</b> IK09 / <b>IP Rating:</b> IP66
<b>Initial Delivered LED Lumens:</b> up to 9600lm
<b>Efficacy:</b> > 160lm/W

**Limited Warranty:** 5 years on luminaire  
 Extended warranty (up to 10 years) available for approved projects. Contact ADLT for further information.



## Ordering Information

Es: UMNA-2-150-5L-307-^A-BK-FX-S-S-01

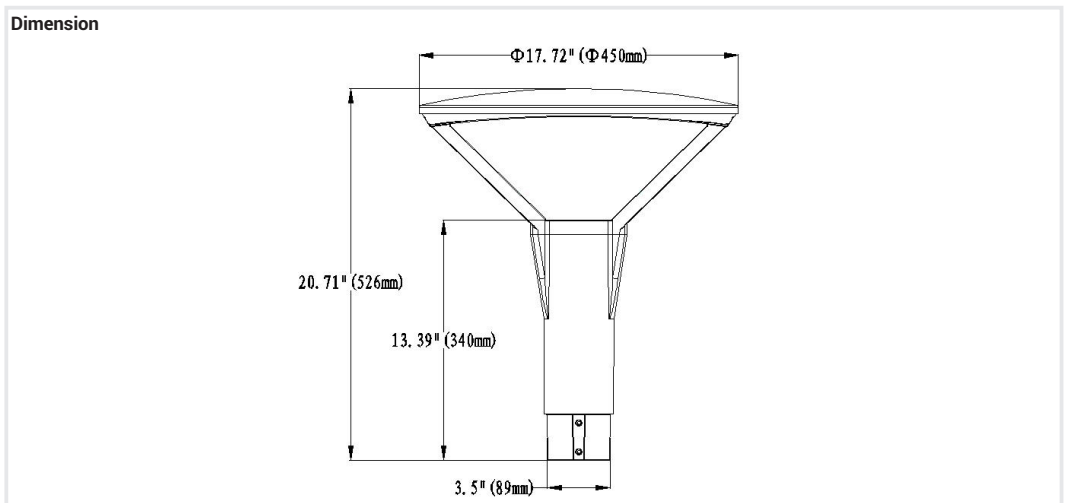
UMNA*	2	150	5L	307	^	A	BK	FX	S	S	01	
Product	Mounting	Optic	Lumen Package	CCT	Insulation Class	Voltage	Finish	Control Option	Variant	Protection	Cable length	
UMNA* Version A	2 Post Top OD 60mm	150 Wide Street	3L 22W	307 30K CRI70	^ Class II	A 220-240V	BK Black	FX Fixed Output	S Standard	S Standard	01 Exit cable 50cm	
			5L 40W			407 40K CRI70		B 100-240V		VM Virtual Midnight		SF*** Standard+Fuse
			8L 60W							DL** DALI 2.0		U**** 10kV
	3 Post Top OD 76mm	200 Extra Wide Street	10L 75W					CL Constant lumen		UF**** 10kV+Fuse		
		ABS Bi-Symmetric Area						VMC Virtual Midnight +Constant Lumen				

\*Product available on request; All product variants marked 'Available on Request' are subject to a Minimal Order Quantity if not already in stock. Please check with our Customer Service Team.

\*\* Not available for CL I

\*\*\*Fuseholder with 5x20 8A rit. fuse on the input (line only)

\*\*\*\* Not available for Class II 8L and 10L



# URBAN Series

MINIMAL - LED Lantern



**CREE** ⇄ LIGHTING

## FEATURES

- Lumen output: Up to 9600lm
- Luminaire efficiency (including optical losses) up to 136lm/W
- CCT: 3000K, 4000K (Ra@70), On request 2700K(Ra@80), 3000K (Ra@80)
- Input: Voltage A 220-240V, Voltage B 100-240V
- Power factor: Up to > 0.9 at full load
- Overvoltage protection: up to 10kV CM/DM according to EN 61000-4-5 and EN 61547
- Operative temperature: -30°C up to +50°C
- Enclosure rated IP66
- Impact resistance IK09
- Control options: Fixed Output, Virtual Midnight, Constant Light Output, DALI (Only in Class 2)
- Lifetime : Up to 123.000 hrs L80B10 (@77°F / 25°C)

## CONSTRUCTION AND MATERIALS

- Die cast aluminum treated with powder coating
- Tempered Glass

## WARRANTY AND CERTIFICATIONS

- Limited Warranty: 5 years (extended warranty available upon request)
- CE Mark, RoHs Mark; ENEC Mark, RCM Mark
- Risk group exempt in accordance with Standard CEI EN62471 for photobiological safety (Tested IEC/TR62778)
- Compliant to: EN 60598-1; EN 60598-2-3

## ELECTRICAL DATA\*

Input Power Designator	System Watts	Total Current	Power Factor
		@230V, 50Hz	
3L	22W	0.1A	0,92
5L	40W	0.17A	0,93
8L	60W	0.26A	0,93
10L	75W	0.33A	0,95

\* Electrical data at 25°C (77°F)

## PRODUCT WEIGHT

WEIGHT	7Kg
--------	-----

# URBAN Series

MINIMAL - LED Lantern



**CREE**  LIGHTING

## Control options

VIRTUAL MIDNIGHT - VM ON-100% / 00:00 -70% / 06:00-100%						
Setting	System Watts W (High Mode)	Nominal Flux lm		System Watts W (Low Mode)	Nominal Flux lm	
		3000K	4000K		3000K	4000K
3L	22W	3640	3876	15W	2548	2713
5L	40W	5785	6160	28W	4049	4312
8L	60W	9125	9717	42W	6387	6802
10L	75W	10656	11348	54W	7459	7944

CL*	
Setting	Description
CL####-****	CLO 50.000 HOURS START AT 90%

\*Also available in combination with VM

# URBAN Series

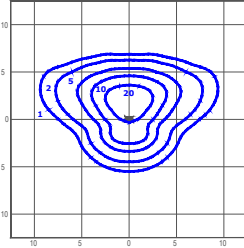
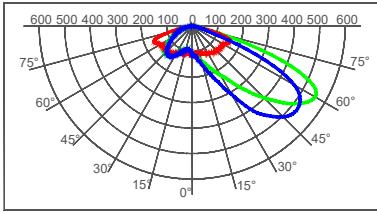
MINIMAL - LED Lantern



## Photometry

All published luminaire photometric testing performed to IESNA LM-79-08 standards by an external laboratory.

### 150 - Wide Street 1.50



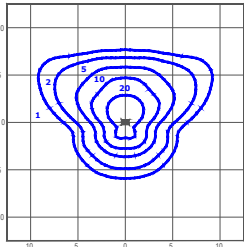
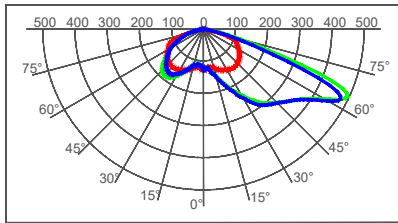
cd/klm  
 C0 - C180 C90 - C270 C50 - C230

UMNA-2-150-5L-407-^A-## - R01203  
 Mounting Height: 5m

LUMEN OUTPUT - 150		
Input Power Designator	3000K	4000K
	Initial Delivered Lumens*	Initial Delivered Lumens*
3L	3041	3308
5L	5039	5257
8L	7787	8292
10L	8859	9684

\* Initial delivered lumens at 25°C (77°F). Actual production yield may vary between -4 and +10% of initial delivered lumens

### 200 - Extra Wide Street



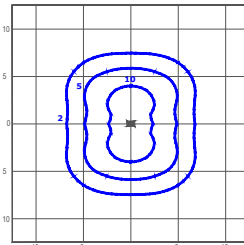
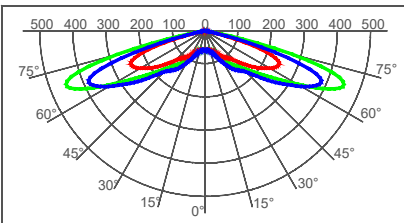
cd/klm  
 C0 - C180 C90 - C270 C70 - C250

UMNA-2-200-5L-407-^A-## - R01204  
 Mounting Height: 5m

LUMEN OUTPUT - 200		
Input Power Designator	3000K	4000K
	Initial Delivered Lumens*	Initial Delivered Lumens*
3L	3017	3247
5L	4920	5133
8L	7603	8097
10L	8641	9637

\* Initial delivered lumens at 25°C (77°F). Actual production yield may vary between -4 and +10% of initial delivered lumens

### ABS - Bi-Symmetric Area



cd/klm  
 C0 - C180 C90 - C270 C50 - C230

UMNA-2-ABS-5L-407-^A-## - R01201  
 Mounting Height: 5m

LUMEN OUTPUT - ABS		
Input Power Designator	3000K	4000K
	Initial Delivered Lumens*	Initial Delivered Lumens*
3L	3193	3474
5L	5133	5435
8L	7910	8424
10L	9231	9983

\* Initial delivered lumens at 25°C (77°F). Actual production yield may vary between -4 and +10% of initial delivered lumens

© 2021 Cree Lighting, All rights reserved. For informational purposes only. Content is subject to change. Patent www.creelighting.com/patents.Cree® and the Cree logo are registered trademarks and the Cree SmartCast Technology Logo is a trademark of Cree, Inc.