



INDUSTRIA

L I N E A R H I G H - B A Y



INDUSTRIA

ONE LUMINAIRE DIVERSE APPLICATIONS

INDUSTRIA is an all-new modular LED High-Bay system built for today's industrial environments.

The family responds to market demands with great attention: It comes in 3 sizes, 6 lumen packages, 4 light distributions, multiple colour temperatures and mounting kits making it suitable for thousands of possible configurations that can satisfy even the most demanding project requirements.

WAREHOUSE

INDUSTRY

FOOD PROCESSING

RETAIL

SPORTS

HIGH RACK OPTIC

UP TO 70°C

GLASS-FREE

CRI 90

IK08

INDUSTRIA

A MODULAR TOOL KIT

With 2000+ possible configurations, INDUSTRIA 's modular design offers a toolkit of optics, mounting options, outputs and sizes for the industrial market and its diverse requirements.



SMALL

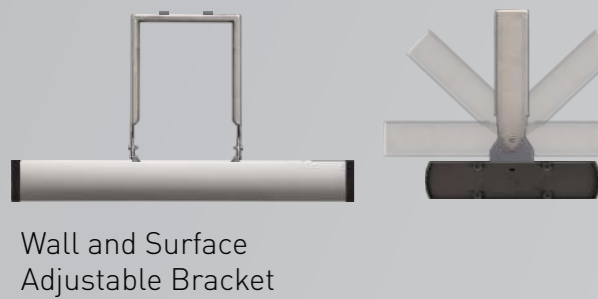
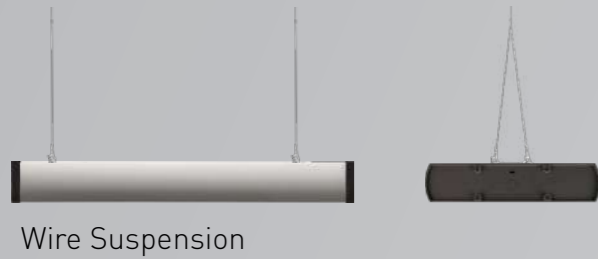


MEDIUM



LARGE

Installation



LED Colour temperature



4000K
CRI80/90
Neutral White



5000K
CRI80/90
Cool White

Dimensions



Industria 2
417 l x 350 w x 75 h



Industria 4
656 l x 350 w x 75 h



Industria 6
976 l x 350 w x 75 h

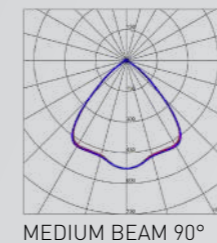
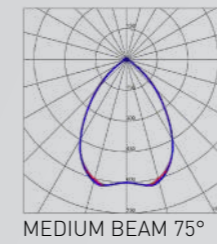
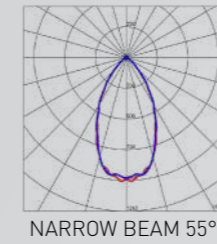
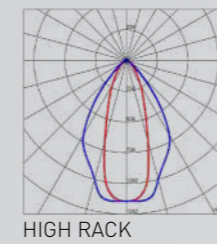
Lumen Output

Small
15L/20L

Medium
29L/34L

Large
44L/51L

Light Distribution



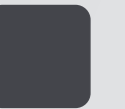
Optional Dust Cover

Equipped with the dust cover, **INDUSTRIA** becomes an ideal solution for food production plants and commercial environment installations

Colour



Body:
Silver



End Caps:
Sapphire Grey



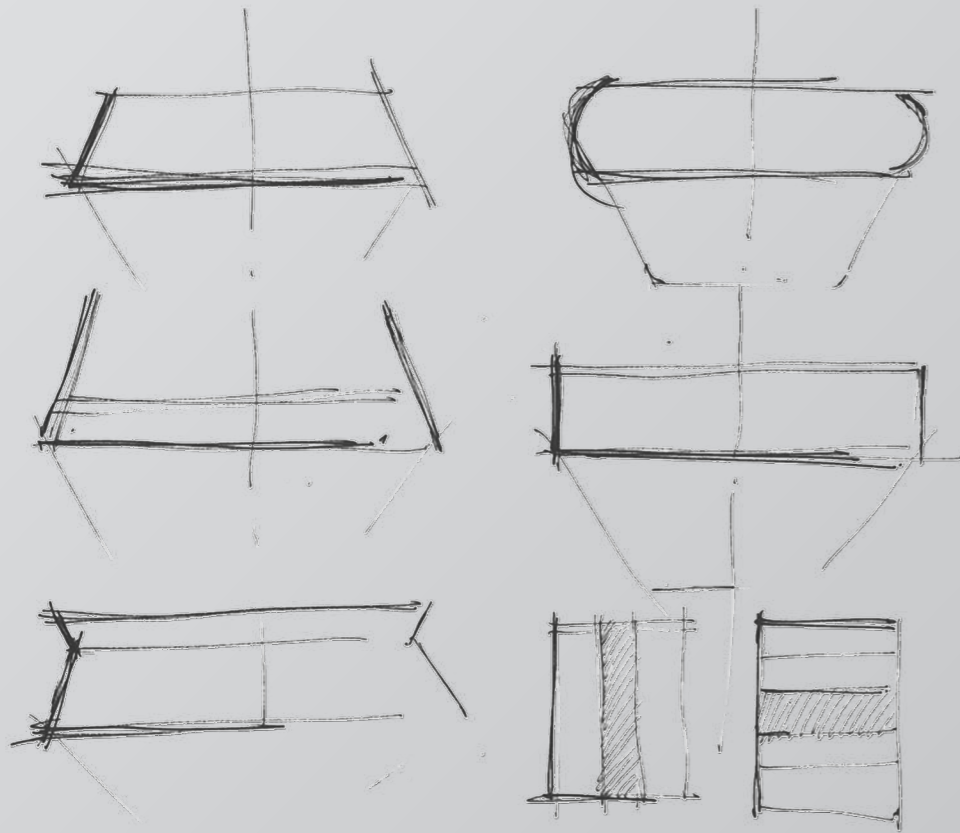
SUSTAINABILITY
THROUGH
MODULARITY



UPGRADE
REPLACE
RECYCLE

LIGHTING FOR INDUSTRY

Characterized by its innovative yet minimal aesthetic qualities, INDUSTRIA stands out for its essential overall design providing class-leading performance in terms of energy efficacy and optics.



F Mark
before we solve we listen

Designed by F Mark

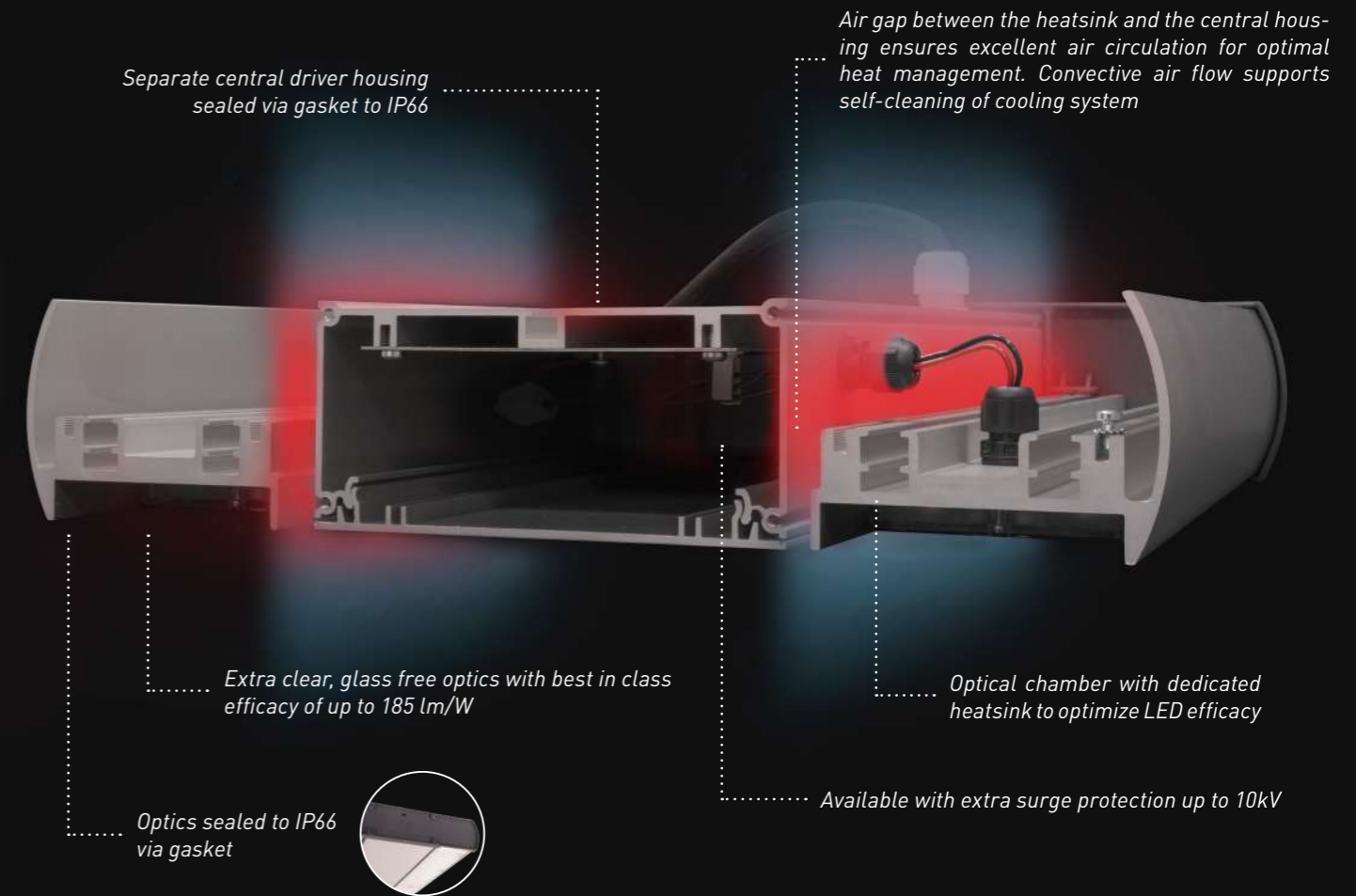
Developed in cooperation with London based product design agency F Mark, INDUSTRIA offers a high level of aesthetics whilst providing market leading performance.

FORM



FUNCTION

INDUSTRIA features a separate IP66 sealed driver and optical chamber, enabling airflow between components. This allows for market leading performance in lumen output and efficacy.



Up to **50,000 lm**

LED efficacy of
185 lm/W

System efficacy
including optic loss
170 lm/W



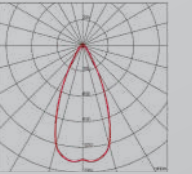
SMARTNESS FOR INDUSTRY

The INDUSTRIA product family is not only good looking, but smart, too. Smart sensors and emergency modules are easily configured with the luminaire, providing turnkey smart solutions for industry, warehousing, retail and many more applications.



EMERGENCY KIT

- IP66 emergency kit option
- Integrated or stand alone.
- 200 lm output
- 3 h emergency operation



SMARTEST SENSOR ON THE MARKET

- Continuous dimming feature
- Easy commissioning with Bluetooth Sensor Configuration App
- Recommended mounting height up to 12 m
- Motion detection within a 30 m diameter range at a mounting height of 12 m



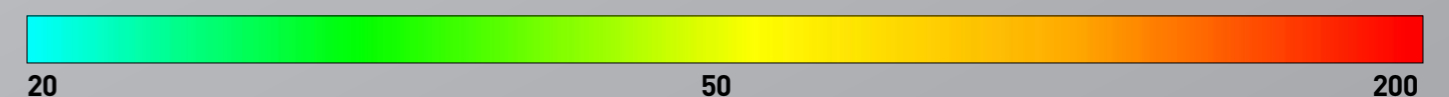
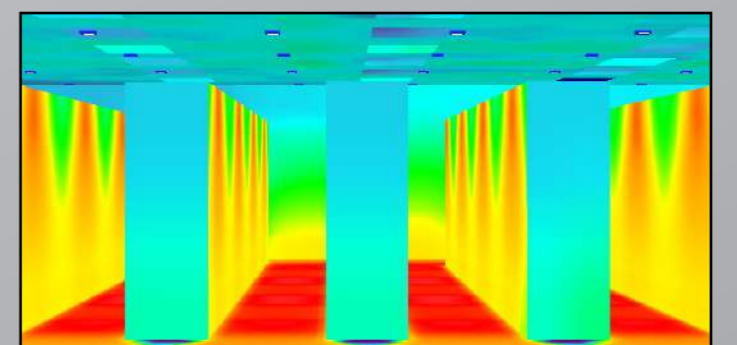
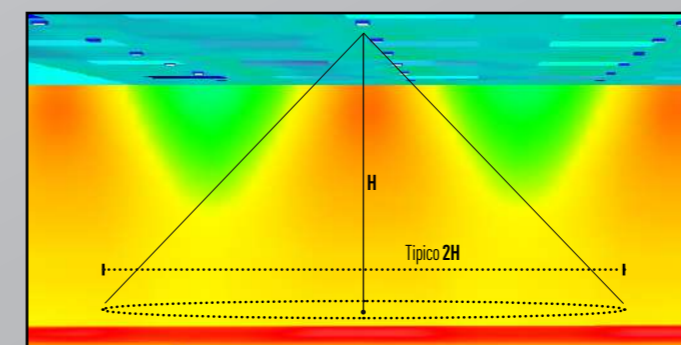
Additional 70%
energy saving potential

No system
commissioning fee

Ideal for
retrofit solutions

PROJECT SUMMARY

LUMINAIRE:	INDA - HR - 15L - 508
LUMINAIRES PER CORRIDOR:	4
INDIVIDUAL SYSTEM WATT:	84 W
TOTAL SYSTEM WATT:	336 W
MOUNTING HEIGHT:	8,5 m
LUMINAIRE SPACING:	9,2 m
ILLUMINANCE LEVELS:	200 lux (floor) 75 lux (shelf)



HIGH RACK OPTIC

9,2 M SPACING BETWEEN LUMINAIRES
REDUCTION OF LUMINAIRE COUNT BY 50%
SYSTEM ENERGY SAVING OF 50%
IMPROVED VISUAL COMFORT | UGR <22

*Please note that for this specific case study, INDUSTRIA's performance has been compared to industrial LED floodlights and not HID luminaires.

PRODUCT SUMMARY

CREE LIGHTING

FEATURES

- LED Lumen output: 15050-52670lm
- LED module efficiency: ≥185 lm/W
- Luminaire efficiency: up to 170 lm/W
- MacAdam Step: : ≤ 3-Step
- CCT:4000K, 5000K Ra80 (Ra90 on request)
- Input Voltage: 220-240V
- Overvoltage protection: 6kV CM / DM
- Operative temperature: -40°C up to +50°C
- Available with High Temperature configurations for Ta ≥ 70°C
- Insulation class: Class I
- Degree of Protection: IP66/IK08
- Control options: DALI 2.0 ,Full Programmable Ambient/Motion Sensor
- UGR max value: ≤ 22 per lens 75, 55 & HR, ≤ 25 per lens 90
- Expected Lifetime (Ta=50°C): L90B10 > 60.000 hours
- Expected Lifetime (Ta=50°C): L80B10 > 122.000 hrs
- Stand-alone emergency light unit IP65 200 lm (3 hours) available as accessory

CONSTRUCTION AND MATERIALS

- Extruded Anodized aluminium with die-cast Aluminium end caps
- Glass-free optical system
- Ultra-clear Replaceable high efficacy lens
- Replaceable LED board equipped with ESD protection
- Mounting Option: Eye Bolt, Wire Suspension, Busbar, Adjustable Bracket (surface and wall)
- Dust covers available as accessory
- Cable type H07RN-F (standard Cable length 2 m)
- Easy installation
- Practicality in ordinary and extraordinary maintenance
- Luminaire is, completely disassembled and recyclable
- Suitable for food industry applications

WARRANTY AND CERTIFICATIONS

- Limited Warranty: 5 years*
- CE / RoHs / RCM / CB / D / ENEC / Ball Impact
- Risk group exempt
- Compliant to: EN 60598-1; EN 60598-2-1
- Energy labels are available for download in the certifications section of the product page

*Extended warranty (up to 10 years) may be available on approved projects. Contact ADLT for further information.

ORDERING INFORMATION

Ordering information

EX: INDA-N-55-15L-408--A-SG-FX-S-S-02 + IND-EY

INDA	- N	- 55	- 15L	- 408	- +	- A	- SG	- FX	- S	- S	- 02
Product	Mounting Options	Optic	Lumen Package	CCT	Insulation Class	Voltage	Finish	Option	Variant	Protection	Cable length
INDA INDUSTRIA Linear High Bay	N* NO MOUNT	55 NARROW BEAM 55D	15L SMALL	308** 30K 80CRI	+ Class 1	A 220-240V	SG	FX FIXED OUTPUT	S NO SENSOR	S BY DRIVER	02 Exit cable 2 m
		75 MEDIUM BEAM 75D	20L SMALL	408 40K 80CRI					M*** MOTION/ AMBIENT SENSOR		
		90 WIDE BEAM 90D	29L MEDIUM	409** 40K 90CRI					U 10 kV		
		HR HIGH RACK 30X70D	34L MEDIUM	508 50K 80CRI							
			44L LARGE	509** 50K 90CRI							
			51L LARGE								

*To be selected from those available in the table MOUNTING OPTIONS

** On request

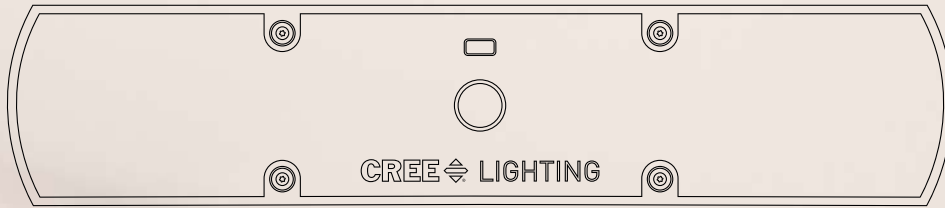
***Must be ordered with DL option

MOUNTING OPTIONS	
Standard Mounting (2 pieces)	IND-EY
Busbar*	IND-BB
Wire Suspension*	IND-SP
Wall and Surface Adjustable Bracket	IND-WB

ACCESSORIES	
Dust Cover 15L-20L	IND-DC-S
Dust Cover 29L-34L	IND-DC-M
Dust Cover 44L-51L	IND-DC-L
Safety Rope 1,5 m	IND-SR

EMERGENCY KIT	
Emergency kit - 200 lm 3 hrs	IND-EM
Emergency Mounting Bracket Kit for INDUSTRIA	IND-EM-BR

*To be ordered together to complete assembly



INDUSTRIA

LINEAR HIGH-BAY

CREE  LIGHTING

© 2022 Cree Lighting Europe S.p.A. All rights reserved.
For informational purposes only. Content is subject to change. Patents : www.creelighting.com/patents
Cree® and the Cree Lighting® logo are registered trademarks and the Cree SmartCast Technology® Logo is a trademark of Cree, Inc.