

Energy TRE

LED Street/Area Luminaire



CREE LIGHTING

Product Description

Designed as a complete street lighting system and optimized for LED light sources, it is distinguished by its extraordinary efficiency. Energy TRE provides the best lighting solution. Developed with three product sizes, scalable lumens package, a complete optical range, flux adjustment options and a wide range of light sources together with a comprehensive optical range, stand-alone flow control options and Zhaga connectivity. Energy can be mounted on a pole or bracket with an external diameter of 60mm, the adjustment ranges from -20° to +110° with a scale of +/-20° and increments of 5°. Adjustments can be done from outside without having to open the product cover.

Applications: Urban and internal roads, pedestrian walkways and car parks.

Performance Summary

Efficacy: up to 160lm/W

Initial Delivered LED Lumens: up to 29800lm

Lifetime color consistency: 4SDM

Limited Warranty: 5 years on luminaire

Extended warranty (up to 10 years) available for approved projects. Contact ADLT for further information.



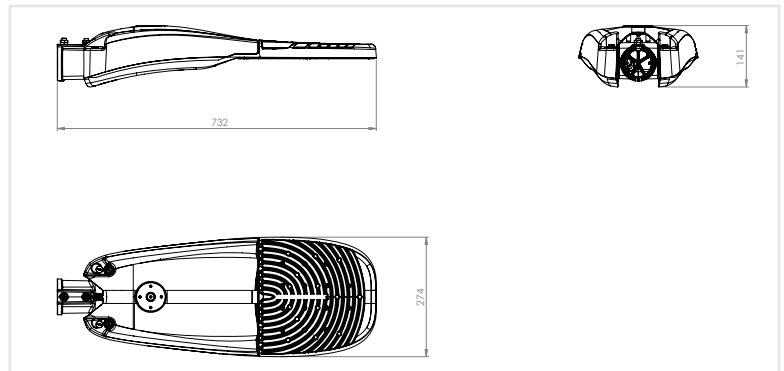
Eg: TRLA-2-K07-19L-407-+-A-SG-FX-S-S-00+ FXA12SA0-001

Ordering Information

TRLA	- 2	- K07	- 19L	- 228	- +	- A	- SG	- FX	- S	- S	- 00									
Product	Mounting	Optic	Lumen Package	CCT	Insulation Class	Voltage	Finish	Options	Variant	Protection	Cable length									
TRLA	2 horiz/vert tenon 60mm	K07 NanoComfort Narrow Street	19L Up to 19000lm	228* 2200K CRI80	+ Class 1	A 220-240V	BK Black Textured	FX Fixed Output VM Virtual Midnight DL DALI CL Constant Lumen VMC Virtual Midnight + Constant Lumen	S No Socket/ No sensor	S By Driver	00 Standard no cable									
			23L Up to 23000lm	278* 2700K CRI80	^ Class 2							SF* Standard +Fuse	01 Exit Cable 1 m							
		K10 NanoComfort Medium Street	26L Up to 26000lm	308 3000K CRI80	SG Sapphire Gray									WH* White Textured	N* Nema Socket 7 pin	U 10 kV	03* Exit Cable 3 m			
			K12 NanoComfort Broad Street	407 4000K CRI70								FX Fixed Output	Z Zhaga Socket/ D4i driver					06* Exit Cable 6 m		
		075 Narrow Street 0.75 (T2S)		577* 5700K CRI70															VM Virtual Midnight	CL Constant Lumen
		100 Medium Street 1.00 (T2S)	VMC Virtual Midnight+ Constant Lumen	S Zhaga Socket/ D4i driver																
	125 Comfort Street 1.25 (T2S)	VMC Virtual Midnight+ Constant Lumen				S Zhaga Socket/ D4i driver	06* Exit Cable 6 m													
	150 Wide Street 1.50 (T3S)							VMC Virtual Midnight+ Constant Lumen	S Zhaga Socket/ D4i driver	06* Exit Cable 6 m										
	200 Extra Wide Street 2.00 (T4S)				VMC Virtual Midnight+ Constant Lumen						S Zhaga Socket/ D4i driver			06* Exit Cable 6 m						
	SCP Street & Cycle Path class P(T2S)											VMC Virtual Midnight+ Constant Lumen	S Zhaga Socket/ D4i driver		06* Exit Cable 6 m					
	AFN Area Flood Narrow															VMC Virtual Midnight+ Constant Lumen	S Zhaga Socket/ D4i driver	06* Exit Cable 6 m		
	ARS Roto-Symmetric Area		VMC Virtual Midnight+ Constant Lumen	S Zhaga Socket/ D4i driver															06* Exit Cable 6 m	

*Denotes non-standard option. MOQ & longer lead time may apply. Contact ADLT for more information.

ADAPTER	
KIT-TRS-AP60-42-48-V0	Fitter kit to mount to 42 & 48 mm tenon



FEATURES
<ul style="list-style-type: none"> Available with NanoComfort® precision optical system LED Lumen output up to 29800lm Zhaga Book 15 compliant LED module efficiency (excluding optical system): ≥ 185 lm/W Luminaire efficiency (including optical losses): up to 160 lm/W CCT: 4000K, Ra70, 3000K Ra80 (2200K, 2700K, 3000K Ra70, on request) Initial Chromatic Selection: ≤ 4-Step MacAdam ellipse or $\Delta u'v' \leq 0.003$ (LM80:08) Luminous flux maintenance factor: L97B10 up to 100,000 hours $T_a=25^\circ\text{C}$ (According to IESNA TM-21) Degree of protection optical compartment and wiring compartment: IP66 (IEC 60529) Optical compartment and wiring compartment impact resistance: $\geq 1\text{K}10$ (EN 62262) Overvoltage protection: up to 10kV CM/DM according to EN 61000-4-5 and EN 61547 Driver equipped with over-temperature protection for optimal performance and safety Power factor: ≥ 0.99 at full load Operating temperature: -40°C up to $+50^\circ\text{C}$ Control options: Virtual Midnight and Constant Light Protocol are adjustable via the main, DALI 2, D4i Available with fuse and 20mm Zhaga Book 18 connector SPD with LED fault indicator (Standard in class 1, available on request in Class 2) Backlight control accessory available on request for selected lenses

CONSTRUCTION AND MATERIALS
<ul style="list-style-type: none"> Die-cast aluminum body with low copper content Power supply compartment accessible without the use of tools Toolless removable wiring plate Knife disconnecter 4mm thick ultra clear transparent glass protection screen Replaceable PMMA lenses Replaceable LED board equipped with ESD protection Cable type H07RN-F (Cable length up to 10m) Easy installation: wiring compartment installed on the cover and pre-assembled integrated joint - to install the luminaire it is not necessary to open it if outgoing cable version, Practicality in ordinary and extraordinary maintenance: power supply compartment accessible and component holder plate removable without tools; lenses and LEDs easily removable and replaceable using a single tool. Luminaire assembled without the use of adhesives, completely disassembled and recyclable

WARRANTY AND CERTIFICATIONS
<ul style="list-style-type: none"> Warranty: 5 years CE/CB/ENEC/RoHS/RCM Risk group exempt in accordance with Standard CEI EN 62471 for photobiological safety (Tested IEC/TR62778) Compliant to: EN 60598-1; EN 60598-2-3 Lead-free powder coatings with excellent exterior durability, conforms to the requirements: <ul style="list-style-type: none"> Adhesion - test comply with ISO 2409 Salt spray - test NSS comply with ISO 9227 Accelerated Weathering - test UV comply with ISO 16474-2 (ex ISO 11507) Constant humidity - test comply with ISO 6270-1

GENERAL DATA*			
Lumen Package	System Watts 220-240V	Total Current	Power Factor
		@230V, 50Hz	
19L	132W	0.58	0.99
23L	157W	0.69	0.99
26L	182W	0.80	0.99

* Electrical data at 25°C (77°F)

WEIGHT	
WEIGHT	8 Kg

LMF LUXEON - RECOMMENDED LUMEN MAINTENANCE FACTORS (LMF) ¹					
Ambient	LMF iniziale	25K hr Projected ² LMF	50K hr Projected ² LMF	75K hr Calculated ³ LMF	100K hr Calculated ³ LMF
25°C	1	0,97	0,94	0,92	0,90

LMF DURIS - RECOMMENDED LUMEN MAINTENANCE FACTORS (LMF) ¹					
Ambient	LMF iniziale	25K hr Projected ² LMF	50K hr Projected ² LMF	75K hr Calculated ³ LMF	100K hr Calculated ³ LMF
25°C	1	0,99	0,98	0,98	0,97

¹Lumen maintenance values calculated at 25°C, with TM-21 based on LM-80 data and on-site testing. DURIS for SCP optic 150 - PCR- PCL and LUXEON for 075, 100, 125 - 200 - AFN - ARS optics.

²In accordance with IESNA TM-21-11, the values shown in the "projected" column represent interpolated and arc values within six times (6X) the total duration in hours of the tests (performed according to IESNA LM-80-08) to which the device has been subjected ([DUT] e.g. the LED chip).

³In accordance with IESNA TM-21-11, the values shown in the column "calculated" are calculated based on a time span greater than six times (6X) the total duration in hours of the tests (performed according to IESNA LM-80-08) to which the device has been subjected ([DUT] e.g. the LED chip).

ZHAGA OPTIONS AVAILABLE	
FX-Z	Zhaga Book 18 connector & D4i driver combined with FX programs (Fixed Power)
VM-Z	Zhaga Book 18 connector & D4i driver combined with VM programs (Virtual Midnight)
CL-Z	Zhaga Book 18 connector & D4i driver combined with CL programs (Constant Light Output)
VMC-Z	Zhaga Book 18 connector & D4i driver combined with VM+CL

Control options - Variant S - N (Optics K07 - K10 - K12 - 075 - 100 - 125 - 200 - AFN - ARS)

Other Setting Options are available. For more information, contact Cree Lighting Europe.

FX - FIXED OUTPUT					
Setting Code	System Watts W	Nominal flux (lm)			Description
		2700K	3000K	4000K	
LUMEN PACKAGE 26L					
FXA12ZA0-0001	182	24406	25596	29763	FIXED OUTPUT 182W
FXA12ZA0-0002	118	17358	18205	21169	FIXED OUTPUT 118W
FXA12ZA0-0003	88	13433	14088	16381	FIXED OUTPUT 88W
LUMEN PACKAGE 23L					
FXA12WA0-0001	157	20919	21940	25511	FIXED OUTPUT 157W
FXA12WA0-0002	102	14879	15604	18145	FIXED OUTPUT 102W
FXA12WA0-0003	76	11514	12075	14041	FIXED OUTPUT 76W
LUMEN PACKAGE 19L					
FXA12SA0-0001	132	17433	18283	21259	FIXED OUTPUT 132W
FXA12SA0-0002	86	12399	13004	15120	FIXED OUTPUT 86W
FXA12SA0-0003	64	9595	10063	11701	FIXED OUTPUT 64W

VM - VIRTUAL MIDNIGHT (Lumen package 26L - 23L)													
Setting Code	W Max	Nominal flux (lm)			W Med	Nominal flux (lm)			W Min	Nominal flux (lm)			Description
		2700K	3000K	4000K		2700K	3000K	4000K		2700K	3000K	4000K	
LUMEN PACKAGE 26L													
VMA12ZA0-0013	182	24406	25596	29763	118	17358	18205	21169	88	13433	14088	16381	VM ON-182W/21:00-118W/00:00-88W/04:00-118W/06:00-182W
VMA12ZA0-0014	118	17358	18205	21169	78	12156	12748	14824	59	9223	9673	11248	VM ON-118W/21:00-78W/00:00-59W/04:00-78W / 06:00-118W
VMA12ZA0-0015	88	13433	14088	16381	59	9223	9673	11248	45	7095	7441	8652	VM ON-88W/21:00-59W / 00:00-45W / 04:00-59W / 06:00-88W
VMA12ZA0-0001	182	24406	25596	29763					88	13433	14088	16381	VM ON-182W / 22:00-88W / 06:00-182W
VMA12ZA0-0002	182	24406	25596	29763					118	17358	18205	21169	VM ON-182W / 22:00-118W / 06:00-182W
VMA12ZA0-0003	118	17358	18205	21169					59	9223	9673	11248	VM ON-118W / 22:00-59W / 06:00-118W
VMA12ZA0-0004	118	17358	18205	21169					78	12156	12748	14824	VM ON-118W / 22:00-78W / 06:00-118W
VMA12ZA0-0005	88	13433	14088	16381					45	7095	7441	8652	VM ON-88W / 22:00-45W / 06:00-88W
VMA12ZA0-0006	88	13433	14088	16381					59	9223	9673	11248	VM ON-88W / 22:00-59W / 06:00-88W
VMA12ZA0-0007	182	24406	25596	29763					88	13433	14088	16381	VM ON-182W / 00:00-88W / 06:00-182W
VMA12ZA0-0008	182	24406	25596	29763					118	17358	18205	21169	VM ON-182W / 00:00-118W / 06:00-182W
VMA12ZA0-0009	118	17358	18205	21169					59	9223	9673	11248	VM ON-118W / 00:00-59W / 06:00-118W
VMA12ZA0-0010	118	17358	18205	21169					78	12156	12748	14824	VM ON-118W / 00:00-78W / 06:00-118W
VMA12ZA0-0011	88	13433	14088	16381					45	7095	7441	8652	VM ON-88W / 00:00-45W / 06:00-88W
VMA12ZA0-0012	88	13433	14088	16381					59	9223	9673	11248	VM ON-88W / 00:00-59W / 06:00-88W
LUMEN PACKAGE 23L													
VMA12WA0-0013	157	20919	21940	25511	102	14879	15604	18145	76	11514	12075	14041	VM ON-157W/21:00-102W/00:00-76W/04:00-102W/06:00-157W
VMA12WA0-0014	102	14879	15604	18145	68	10419	10927	12706	51	7905	8291	9641	VM ON-102W/21:00-68W/00:00-51W/ 04:00-68W / 06:00-102W
VMA12WA0-0015	76	11514	12075	14041	51	7905	8291	9641	39	6081	6378	7416	VM ON-76W / 21:00-51W / 00:00-39W/04:00-51W / 06:00-76W
VMA12WA0-0001	157	20919	21940	25511					76	11514	12075	14041	VM ON-157W / 22:00-76W / 06:00-157W
VMA12WA0-0002	157	20919	21940	25511					102	14879	15604	18145	VM ON-157W / 22:00-102W / 06:00-157W
VMA12WA0-0003	102	14879	15604	18145					51	7905	8291	9641	VM ON-102W / 22:00-51W / 06:00-102W
VMA12WA0-0004	102	14879	15604	18145					68	10419	10927	12706	VM ON-102W / 22:00-68W / 06:00-102W
VMA12WA0-0005	76	11514	12075	14041					39	6081	6378	7416	VM ON-76W / 22:00-39W / 06:00-76W
VMA12WA0-0006	76	11514	12075	14041					51	7905	8291	9641	VM ON-76W / 22:00-51W / 06:00-76W
VMA12WA0-0007	157	20919	21940	25511					76	11514	12075	14041	VM ON-157W / 00:00-76W / 06:00-157W
VMA12WA0-0008	157	20919	21940	25511					102	14879	15604	18145	VM ON-157W / 00:00-102W / 06:00-157W
VMA12WA0-0009	102	14879	15604	18145					51	7905	8291	9641	VM ON-102W / 00:00-51W / 06:00-102W
VMA12WA0-0010	102	14879	15604	18145					68	10419	10927	12706	VM ON-102W / 00:00-68W / 06:00-102W
VMA12WA0-0011	76	11514	12075	14041					39	6081	6378	7416	VM ON-76W / 00:00-39W / 06:00-76W
VMA12WA0-0012	76	11514	12075	14041					51	7905	8291	9641	VM ON-76W / 00:00-51W / 06:00-76W

Control options - Variant S - N (Optics K07 - K10 - K12 - 075 - 100 - 125 - 200 - AFN - ARS)

Other Setting Options are available. For more information, contact Cree Lighting Europe.

VM - VIRTUAL MIDNIGHT(Lumen package 19L)													
Setting Code	W Max	Nominal flux (lm)			W Med	Nominal flux (lm)			W Min	Nominal flux (lm)			Description
		2700K	3000K	4000K		2700K	3000K	4000K		2700K	3000K	4000K	
LUMEN PACKAGE 19L													
VMA12SA0-0013	132	17433	18283	21259	86	12399	13004	15120	64	9595	10063	11701	VM ON-132W/21:00-86W/00:00-64W/ 04:00-86W / 06:00-132W
VMA12SA0-0014	86	12399	13004	15120	57	8683	9106	10588	42	6588	6909	8034	VM ON-86W/ 21:00-57W / 00:00-42W / 04:00-57W / 06:00-86W
VMA12SA0-0015	64	9595	10063	11701	42	6588	6909	8034	33	5068	5315	6180	VM ON-64W/ 21:00-42W / 00:00-33W / 04:00-42W / 06:00-64W
VMA12SA0-0001	132	17433	18283	21259					64	9595	10063	11701	VM ON-132W / 22:00-64W / 06:00-132W
VMA12SA0-0002	132	17433	18283	21259					86	12399	13004	15120	VM ON-132W / 22:00-86W / 06:00-132W
VMA12SA0-0003	86	12399	13004	15120					42	6588	6909	8034	VM ON-86W / 22:00-42W / 06:00-86W
VMA12SA0-0004	86	12399	13004	15120					57	8683	9106	10588	VM ON-86W / 22:00-57W / 06:00-86W
VMA12SA0-0005	64	9595	10063	11701					33	5068	5315	6180	VM ON-64W / 22:00-33W / 06:00-64W
VMA12SA0-0006	64	9595	10063	11701					42	6588	6909	8034	VM ON-64W / 22:00-42W / 06:00-64W
VMA12SA0-0007	132	17433	18283	21259					64	9595	10063	11701	VM ON-132W / 00:00-64W / 06:00-132W
VMA12SA0-0008	132	17433	18283	21259					86	12399	13004	15120	VM ON-132W / 00:00-86W / 06:00-132W
VMA12WAO-0013	86	12399	13004	15120					42	6588	6909	8034	VM ON-86W / 00:00-42W / 06:00-86W
VMA12SA0-0010	86	12399	13004	15120					57	8683	9106	10588	VM ON-86W / 00:00-57W / 06:00-86W
VMA12SA0-0011	64	9595	10063	11701					33	5068	5315	6180	VM ON-64W / 00:00-33W / 06:00-64W
VMA12SA0-0012	64	9595	10063	11701					42	6588	6909	8034	VM ON-64W / 00:00-42W / 06:00-64W

DL (DALI DIMMABLE)						
Lumen Package	Setting Code	System Watts W	Nominal flux (lm)			Description
			2700K	3000K	4000K	
26L	DLE12ZA0-0001	182	24406	25596	29763	DALI MAX 182W
23L	DLE12WA0-0001	157	20919	21940	25511	DALI MAX 157W
19L	DLE12SA0-0001	132	17433	18283	21259	DALI MAX 132W

CL*	
Setting Code	Description
CL####-****	CLO 50.000 HOURS START AT 90%
CL####-****	CLO 100.000 HOURS START AT 80%

*Standard CLO to be matched to programme powers for FX option for S-N variants, please for information contact Cree Lighting Europe.

VMC*	
Setting Code	Description
VMC####-****	CLO 50.000 HOURS START AT 90%
VMC####-****	CLO 100.000 HOURS START AT 80%

*Standard CLO to be matched to the wattage of the VM option programmes for S-N variants, please for information contact Cree Lighting Europe.

Control options - Variant Z (Optics K07 - K10 - K12 - 075 - 100 - 125 - 200 - AFN - ARS)

Other Setting Options are available. For more information, contact Cree Lighting Europe.

FX - FIXED OUTPUT					
Setting Code	System Watts W	Nominal flux (lm)			Description
		2700K	3000K	4000K	
LUMEN PACKAGE 26L					
FXP12ZA0-0001	182	24406	25596	29763	FIXED OUTPUT 182W SR
FXP12ZA0-0002	118	17358	18205	21169	FIXED OUTPUT 118W SR
FXP12ZA0-0003	88	13433	14088	16381	FIXED OUTPUT 88W SR
LUMEN PACKAGE 23L					
FXP12WA0-0001	157	20919	21940	25511	FIXED OUTPUT 157W SR
FXP12WA0-0002	102	14879	15604	18145	FIXED OUTPUT 102W SR
FXP12WA0-0003	76	11514	12075	14041	FIXED OUTPUT 76W SR
LUMEN PACKAGE 19L					
FXP12SA0-0001	132	17433	18283	21259	FIXED OUTPUT 132W SR
FXP12SA0-0002	86	12399	13004	15120	FIXED OUTPUT 86W SR
FXP12SA0-0003	64	9595	10063	11701	FIXED OUTPUT 64W SR

VM - VIRTUAL MIDNIGHT (Lumen package 26L - 23L)													
Setting Code	W Max	Nominal flux (lm)			W Med	Nominal flux (lm)			W Min	Nominal flux (lm)			Description
		2700K	3000K	4000K		2700K	3000K	4000K		2700K	3000K	4000K	
LUMEN PACKAGE 26L													
VMP12ZA0-0013	182	24406	25596	29763	118	17358	18205	21169	88	13433	14088	16381	VM ON-182W/21:00-118W/00:00-88W/04:00-118W/06:00-182W SR
VMP12ZA0-0013	118	17358	18205	21169	78	12156	12748	14824	59	9223	9673	11248	VM ON-118W/21:00-78W/00:00-59W/04:00-78W/06:00-118W SR
VMP12ZA0-0013	88	13433	14088	16381	59	9223	9673	11248	45	7095	7441	8652	VM ON-88W/21:00-59W/00:00-45W/04:00-59W/06:00-88W SR
VMP12ZA0-0013	182	24406	25596	29763					88	13433	14088	16381	VM ON-182W / 22:00-88W / 06:00-182W SR
VMP12ZA0-0013	182	24406	25596	29763					118	17358	18205	21169	VM ON-182W / 22:00-118W / 06:00-182W SR
VMP12ZA0-0013	118	17358	18205	21169					59	9223	9673	11248	VM ON-118W / 22:00-59W / 06:00-118W SR
VMP12ZA0-0013	118	17358	18205	21169					78	12156	12748	14824	VM ON-118W / 22:00-78W / 06:00-118W SR
VMP12ZA0-0013	88	13433	14088	16381					45	7095	7441	8652	VM ON-88W / 22:00-45W / 06:00-88W SR
VMP12ZA0-0013	88	13433	14088	16381					59	9223	9673	11248	VM ON-88W / 22:00-59W / 06:00-88W SR
VMP12ZA0-0013	182	24406	25596	29763					88	13433	14088	16381	VM ON-182W / 00:00-88W / 06:00-182W SR
VMP12ZA0-0013	182	24406	25596	29763					118	17358	18205	21169	VM ON-182W / 00:00-118W / 06:00-182W SR
VMP12ZA0-0013	118	17358	18205	21169					59	9223	9673	11248	VM ON-118W / 00:00-59W / 06:00-118W SR
VMP12ZA0-0013	118	17358	18205	21169					78	12156	12748	14824	VM ON-118W / 00:00-78W / 06:00-118W SR
VMP12ZA0-0013	88	13433	14088	16381					45	7095	7441	8652	VM ON-88W / 00:00-45W / 06:00-88W SR
VMP12ZA0-0013	88	13433	14088	16381					59	9223	9673	11248	VM ON-88W / 00:00-59W / 06:00-88W SR
LUMEN PACKAGE 23L													
VMP12WA0-0013	157	20919	21940	25511	102	14879	15604	18145	76	11514	12075	14041	VM ON-157W/21:00-102W/00:00-76W/04:00-102W/06:00-157W SR
VMP12WA0-0014	102	14879	15604	18145	68	10419	10927	12706	51	7905	8291	9641	VM ON-102W/21:00-68W/00:00-51W/04:00-68W/06:00-102W SR
VMP12WA0-0015	76	11514	12075	14041	51	7905	8291	9641	39	6081	6378	7416	VM ON-76W/21:00-51W/00:00-39W/04:00-51W/06:00-76W SR
VMP12WA0-0001	157	20919	21940	25511					76	11514	12075	14041	VM ON-157W / 22:00-76W / 06:00-157W SR
VMP12WA0-0002	157	20919	21940	25511					102	14879	15604	18145	VM ON-157W / 22:00-102W / 06:00-157W SR
VMP12WA0-0003	102	14879	15604	18145					51	7905	8291	9641	VM ON-102W / 22:00-51W / 06:00-102W SR
VMP12WA0-0004	102	14879	15604	18145					68	10419	10927	12706	VM ON-102W / 22:00-68W / 06:00-102W SR
VMP12WA0-0005	76	11514	12075	14041					39	6081	6378	7416	VM ON-76W / 22:00-39W / 06:00-76W SR
VMP12WA0-0006	76	11514	12075	14041					51	7905	8291	9641	VM ON-76W / 22:00-51W / 06:00-76W SR
VMP12WA0-0007	157	20919	21940	25511					76	11514	12075	14041	VM ON-157W / 00:00-76W / 06:00-157W SR
VMP12WA0-0008	157	20919	21940	25511					102	14879	15604	18145	VM ON-157W / 00:00-102W / 06:00-157W SR
VMP12WA0-0009	102	14879	15604	18145					51	7905	8291	9641	VM ON-102W / 00:00-51W / 06:00-102W SR
VMP12WA0-0010	102	14879	15604	18145					68	10419	10927	12706	VM ON-102W / 00:00-68W / 06:00-102W SR
VMP12WA0-0011	76	11514	12075	14041					39	6081	6378	7416	VM ON-76W / 00:00-39W / 06:00-76W SR
VMP12WA0-0012	76	11514	12075	14041					51	7905	8291	9641	VM ON-76W / 00:00-51W / 06:00-76W SR
VMP11MA0-0012	46	6709	7597	8434					31	4626	5239	5816	VM ON-46W / 00:00-31W / 06:00-46W

Control options - Variant Z (Optics 075 - 100 - 125 - 200 - AFN - ARS)

Other Setting Options are available. For more information, contact Cree Lighting Europe.

VM - VIRTUAL MIDNIGHT(Lumen package 19L)													
Setting Code	W Max	Nominal flux (lm)			W Med	Nominal flux (lm)			W Min	Nominal flux (lm)			Description
		2700K	3000K	4000K		2700K	3000K	4000K		2700K	3000K	4000K	
LUMEN PACKAGE 19L													
VMP12SA0-0013	132	17433	18283	21259	86	12399	13004	15120	64	9595	10063	11701	VM ON-132W/21:00-86W/00:00-64W/04:00-86W/06:00-132W SR
VMP12SA0-0014	86	12399	13004	15120	57	8683	9106	10588	42	6588	6909	8034	VM ON-86W/21:00-57W/00:00-42W/04:00-57W/ 06:00-86W SR
VMP12SA0-0015	64	9595	10063	11701	42	6588	6909	8034	33	5068	5315	6180	VM ON-64W/21:00-42W/00:00-33W/04:00-42W/ 06:00-64W SR
VMP12SA0-0001	132	17433	18283	21259					64	9595	10063	11701	VM ON-132W / 22:00-64W / 06:00-132W SR
VMP12SA0-0002	132	17433	18283	21259					86	12399	13004	15120	VM ON-132W / 22:00-86W / 06:00-132W SR
VMP12SA0-0003	86	12399	13004	15120					42	6588	6909	8034	VM ON-86W / 22:00-42W / 06:00-86W SR
VMP12SA0-0004	86	12399	13004	15120					57	8683	9106	10588	VM ON-86W / 22:00-57W / 06:00-86W SR
VMP12SA0-0005	64	9595	10063	11701					33	5068	5315	6180	VM ON-64W / 22:00-33W / 06:00-64W SR
VMP12SA0-0006	64	9595	10063	11701					42	6588	6909	8034	VM ON-64W / 22:00-42W / 06:00-64W SR
VMP12SA0-0007	132	17433	18283	21259					64	9595	10063	11701	VM ON-132W / 00:00-64W / 06:00-132W SR
VMP12SA0-0008	132	17433	18283	21259					86	12399	13004	15120	VM ON-132W / 00:00-86W / 06:00-132W SR
VMP12WAO-0013	86	12399	13004	15120					42	6588	6909	8034	VM ON-86W / 00:00-42W / 06:00-86W SR
VMP12SA0-0010	86	12399	13004	15120					57	8683	9106	10588	VM ON-86W / 00:00-57W / 06:00-86W SR
VMP12SA0-0011	64	9595	10063	11701					33	5068	5315	6180	VM ON-64W / 00:00-33W / 06:00-64W SR
VMP12SA0-0012	64	9595	10063	11701					42	6588	6909	8034	VM ON-64W / 00:00-42W / 06:00-64W SR

CL*	
Setting Code	Description
CL###-****	CLO 50.000 HOURS START AT 90%
CL###-****	CLO 100.000 HOURS START AT 80%

*Standard CLO to be matched to programme powers for FX option for S-N variants, please for information contact Cree Lighting Europe.

VMC*	
Setting Code	Description
VMC###-****	CLO 50.000 HOURS START AT 90%
VMC###-****	CLO 100.000 HOURS START AT 80%

*Standard CLO to be matched to the wattage of the VM option programmes for S-N variants, please for information contact Cree Lighting Europe.

Control options - Variant S - N(Optics 150 - SCP)

Other Setting Options are available. For more information, contact Cree Lighting Europe.

FX - FIXED OUTPUT					
Setting Code	System Watts W	Nominal flux (lm)			Description
		2700K	3000K	4000K	
LUMEN PACKAGE 26L					
FXA12ZA0-0001	182	23178	25287	29763	FIXED OUTPUT 182W
FXA12ZA0-0002	118	16485	17985	21169	FIXED OUTPUT 118W
FXA12ZA0-0003	88	12757	13918	16381	FIXED OUTPUT 88W
LUMEN PACKAGE 23L					
FXA12WA0-0001	157	19867	21675	25511	FIXED OUTPUT 157W
FXA12WA0-0002	102	14130	15416	18145	FIXED OUTPUT 102W
FXA12WA0-0003	76	10935	11929	14041	FIXED OUTPUT 76W
LUMEN PACKAGE 19L					
FXA12SA0-0001	132	16556	18062	21259	FIXED OUTPUT 132W
FXA12SA0-0002	86	11775	12847	15120	FIXED OUTPUT 86W
FXA12SA0-0003	64	9112	9941	11701	FIXED OUTPUT 64W

VM - VIRTUAL MIDNIGHT (Lumen package 26L - 23L)													
Setting Code	W Max	Nominal flux (lm)			W Med	Nominal flux (lm)			W Min	Nominal flux (lm)			Description
		2700K	3000K	4000K		2700K	3000K	4000K		2700K	3000K	4000K	
LUMEN PACKAGE 26L													
VMA12ZA0-0013	182	23178	25287	29763	118	16485	17985	21169	88	12757	13918	16381	VM ON-182W/21:00-118W/00:00-88W/04:00-118W/06:00-182W
VMA12ZA0-0014	118	16485	17985	21169	78	11544	12595	14824	59	8759	9556	11248	VM ON-118W/21:00-78W/00:00-59W/04:00-78W/06:00-118W
VMA12ZA0-0015	88	12757	13918	16381	59	8759	9556	11248	45	6738	7351	8652	VM ON-88W/21:00-59W/00:00-45W/04:00-59W/06:00-88W
VMA12ZA0-0001	182	23178	25287	29763					88	12757	13918	16381	VM ON-182W/22:00-88W/06:00-182W
VMA12ZA0-0002	182	23178	25287	29763					118	16485	17985	21169	VM ON-182W/22:00-118W/06:00-182W
VMA12ZA0-0003	118	16485	17985	21169					59	8759	9556	11248	VM ON-118W/22:00-59W/06:00-118W
VMA12ZA0-0004	118	16485	17985	21169					78	11544	12595	14824	VM ON-118W/22:00-78W/06:00-118W
VMA12ZA0-0005	88	12757	13918	16381					45	6738	7351	8652	VM ON-88W/22:00-45W/06:00-88W
VMA12ZA0-0006	88	12757	13918	16381					59	8759	9556	11248	VM ON-88W/22:00-59W/06:00-88W
VMA12ZA0-0007	182	23178	25287	29763					88	12757	13918	16381	VM ON-182W/00:00-88W/06:00-182W
VMA12ZA0-0008	182	23178	25287	29763					118	16485	17985	21169	VM ON-182W/00:00-118W/06:00-182W
VMA12ZA0-0009	118	16485	17985	21169					59	8759	9556	11248	VM ON-118W/00:00-59W/06:00-118W
VMA12ZA0-0010	118	16485	17985	21169					78	11544	12595	14824	VM ON-118W/00:00-78W/06:00-118W
VMA12ZA0-0011	88	12757	13918	16381					45	6738	7351	8652	VM ON-88W/00:00-45W/06:00-88W
VMA12ZA0-0012	88	12757	13918	16381					59	8759	9556	11248	VM ON-88W/00:00-59W/06:00-88W
LUMEN PACKAGE 23L													
VMA12WA0-0013	157	19867	21675	25511	102	14130	15416	18145	76	10935	11929	14041	VM ON-157W/21:00-102W/00:00-76W/04:00-102W/06:00-157W
VMA12WA0-0014	102	14130	15416	18145	68	9895	10795	12706	51	7508	8191	9641	VM ON-102W/21:00-68W/00:00-51W/04:00-68W/06:00-102W
VMA12WA0-0015	76	10935	11929	14041	51	7508	8191	9641	39	5775	6301	7416	VM ON-76W/21:00-51W/00:00-39W/04:00-51W/06:00-76W
VMA12WA0-0001	157	19867	21675	25511					76	10935	11929	14041	VM ON-157W/22:00-76W/06:00-157W
VMA12WA0-0002	157	19867	21675	25511					102	14130	15416	18145	VM ON-157W/22:00-102W/06:00-157W
VMA12WA0-0003	102	14130	15416	18145					51	7508	8191	9641	VM ON-102W/22:00-51W/06:00-102W
VMA12WA0-0004	102	14130	15416	18145					68	9895	10795	12706	VM ON-102W/22:00-68W/06:00-102W
VMA12WA0-0005	76	10935	11929	14041					39	5775	6301	7416	VM ON-76W/22:00-39W/06:00-76W
VMA12WA0-0006	76	10935	11929	14041					51	7508	8191	9641	VM ON-76W/22:00-51W/06:00-76W
VMA12WA0-0007	157	19867	21675	25511					76	10935	11929	14041	VM ON-157W/00:00-76W/06:00-157W
VMA12WA0-0008	157	19867	21675	25511					102	14130	15416	18145	VM ON-157W/00:00-102W/06:00-157W
VMA12WA0-0009	102	14130	15416	18145					51	7508	8191	9641	VM ON-102W/00:00-51W/06:00-102W
VMA12WA0-0010	102	14130	15416	18145					68	9895	10795	12706	VM ON-102W/00:00-68W/06:00-102W
VMA12WA0-0011	76	10935	11929	14041					39	5775	6301	7416	VM ON-76W/00:00-39W/06:00-76W
VMA12WA0-0012	76	10935	11929	14041					51	7508	8191	9641	VM ON-76W/00:00-51W/06:00-76W

Control options - Variant S - N (Optics 150 - SCP)

Other Setting Options are available. For more information, contact Cree Lighting Europe.

VM - VIRTUAL MIDNIGHT(Lumen package 19L)													
Setting Code	W Max	Nominal flux (lm)			W Med	Nominal flux (lm)			W Min	Nominal flux (lm)			Description
		2700K	3000K	4000K		2700K	3000K	4000K		2700K	3000K	4000K	
LUMEN PACKAGE 19L													
VMA12SA0-0013	132	16556	18062	21259	86	11775	12847	15120	64	9112	9941	11701	VM ON-132W/21:00-86W/00:00-64W/ 04:00-86W / 06:00-132W
VMA12SA0-0014	86	11775	12847	15120	57	8246	8996	10588	42	6257	6826	8034	VM ON-86W /21:00-57W / 00:00-42W / 04:00-57W / 06:00-86W
VMA12SA0-0015	64	9112	9941	11701	42	6257	6826	8034	33	4813	5251	6180	VM ON-64W /21:00-42W / 00:00-33W / 04:00-42W / 06:00-64W
VMA12SA0-0001	132	16556	18062	21259					64	9112	9941	11701	VM ON-132W / 22:00-64W / 06:00-132W
VMA12SA0-0002	132	16556	18062	21259					86	11775	12847	15120	VM ON-132W / 22:00-86W / 06:00-132W
VMA12SA0-0003	86	11775	12847	15120					42	6257	6826	8034	VM ON-86W / 22:00-42W / 06:00-86W
VMA12SA0-0004	86	11775	12847	15120					57	8246	8996	10588	VM ON-86W / 22:00-57W / 06:00-86W
VMA12SA0-0005	64	9112	9941	11701					33	4813	5251	6180	VM ON-64W / 22:00-33W / 06:00-64W
VMA12SA0-0006	64	9112	9941	11701					42	6257	6826	8034	VM ON-64W / 22:00-42W / 06:00-64W
VMA12SA0-0007	132	16556	18062	21259					64	9112	9941	11701	VM ON-132W / 00:00-64W / 06:00-132W
VMA12SA0-0008	132	16556	18062	21259					86	11775	12847	15120	VM ON-132W / 00:00-86W / 06:00-132W
VMA12WAD-0013	86	11775	12847	15120					42	6257	6826	8034	VM ON-86W / 00:00-42W / 06:00-86W
VMA12SA0-0010	86	11775	12847	15120					57	8246	8996	10588	VM ON-86W / 00:00-57W / 06:00-86W
VMA12SA0-0011	64	9112	9941	11701					33	4813	5251	6180	VM ON-64W / 00:00-33W / 06:00-64W
VMA12SA0-0012	64	9112	9941	11701					42	6257	6826	8034	VM ON-64W / 00:00-42W / 06:00-64W

DL - DALI DIMMABLE						
Lumen Package	Setting Code	System Watts W	Nominal flux (lm)			Description
			2700K	3000K	4000K	
26L	DLE12ZA0-0001	182	23178	25287	29763	DALI MAX 182W
23L	DLE12WA0-0001	157	19867	21675	25511	DALI MAX 157W
19L	DLE12SA0-0001	132	16556	18062	21259	DALI MAX 132W

Control options - Variant Z (Optics 150 - SCP)

Other Setting Options are available. For more information, contact Cree Lighting Europe.

FX - FIXED OUTPUT					
Setting Code	System Watts W	Nominal flux (lm)			Description
		2700K	3000K	4000K	
LUMEN PACKAGE 26L					
FXP12ZA0-0001	182	23178	25287	29763	FIXED OUTPUT 182W SR
FXP12ZA0-0002	118	16485	17985	21169	FIXED OUTPUT 118W SR
FXP12ZA0-0003	88	12757	13918	16381	FIXED OUTPUT 88W SR
LUMEN PACKAGE 23L					
FXP12WA0-0001	157	19867	21675	25511	FIXED OUTPUT 157W SR
FXP12WA0-0002	102	14130	15416	18145	FIXED OUTPUT 102W SR
FXP12WA0-0003	76	10935	11929	14041	FIXED OUTPUT 76W SR
LUMEN PACKAGE 19L					
FXP12SA0-0001	132	16556	18062	21259	FIXED OUTPUT 132W SR
FXP12SA0-0002	86	11775	12847	15120	FIXED OUTPUT 86W SR
FXP12SA0-0003	64	9112	9941	11701	FIXED OUTPUT 64W SR

VM - VIRTUAL MIDNIGHT (Lumen package 26L - 23L)													
Setting Code	W Max	Nominal flux (lm)			W Med	Nominal flux (lm)			W Min	Nominal flux (lm)			Description
		2700K	3000K	4000K		2700K	3000K	4000K		2700K	3000K	4000K	
LUMEN PACKAGE 26L													
VMP12ZA0-0013	182	23178	25287	29763	118	16485	17985	21169	88	12757	13918	16381	VM ON-182W/21:00-118W/00:00-88W/04:00-118W/06:00-182W SR
VMP12ZA0-0013	118	16485	17985	21169	78	11544	12595	14824	59	8759	9556	11248	VM ON-118W/21:00-78W/00:00-59W/04:00-78W/06:00-118W SR
VMP12ZA0-0013	88	12757	13918	16381	59	8759	9556	11248	45	6738	7351	8652	VM ON-88W/21:00-59W/00:00-45W/04:00-59W/06:00-88W SR
VMP12ZA0-0013	182	23178	25287	29763					88	12757	13918	16381	VM ON-182W / 22:00-88W / 06:00-182W SR
VMP12ZA0-0013	182	23178	25287	29763					118	16485	17985	21169	VM ON-182W / 22:00-118W / 06:00-182W SR
VMP12ZA0-0013	118	16485	17985	21169					59	8759	9556	11248	VM ON-118W / 22:00-59W / 06:00-118W SR
VMP12ZA0-0013	118	16485	17985	21169					78	11544	12595	14824	VM ON-118W / 22:00-78W / 06:00-118W SR
VMP12ZA0-0013	88	12757	13918	16381					45	6738	7351	8652	VM ON-88W / 22:00-45W / 06:00-88W SR
VMP12ZA0-0013	88	12757	13918	16381					59	8759	9556	11248	VM ON-88W / 22:00-59W / 06:00-88W SR
VMP12ZA0-0013	182	23178	25287	29763					88	12757	13918	16381	VM ON-182W / 00:00-88W / 06:00-182W SR
VMP12ZA0-0013	182	23178	25287	29763					118	16485	17985	21169	VM ON-182W / 00:00-118W / 06:00-182W SR
VMP12ZA0-0013	118	16485	17985	21169					59	8759	9556	11248	VM ON-118W / 00:00-59W / 06:00-118W SR
VMP12ZA0-0013	118	16485	17985	21169					78	11544	12595	14824	VM ON-118W / 00:00-78W / 06:00-118W SR
VMP12ZA0-0013	88	12757	13918	16381					45	6738	7351	8652	VM ON-88W / 00:00-45W / 06:00-88W SR
VMP12ZA0-0013	88	12757	13918	16381					59	8759	9556	11248	VM ON-88W / 00:00-59W / 06:00-88W SR
LUMEN PACKAGE 23L													
VMP12WA0-0013	157	19867	21675	25511	102	14130	15416	18145	76	10935	11929	14041	VM ON-157W/21:00-102W/00:00-76W / 04:00-102W/06:00-157W SR
VMP12WA0-0014	102	14130	15416	18145	68	9895	10795	12706	51	7508	8191	9641	VM ON-102W/21:00-68W/00:00-51W/04:00-68W/06:00-102W SR
VMP12WA0-0015	76	10935	11929	14041	51	7508	8191	9641	39	5775	6301	7416	VM ON-76W/21:00-51W/00:00-39W/04:00-51W/06:00-76W SR
VMP12WA0-0001	157	19867	21675	25511					76	10935	11929	14041	VM ON-157W / 22:00-76W / 06:00-157W SR
VMP12WA0-0002	157	19867	21675	25511					102	14130	15416	18145	VM ON-157W / 22:00-102W / 06:00-157W SR
VMP12WA0-0003	102	14130	15416	18145					51	7508	8191	9641	VM ON-102W / 22:00-51W / 06:00-102W SR
VMP12WA0-0004	102	14130	15416	18145					68	9895	10795	12706	VM ON-102W / 22:00-68W / 06:00-102W SR
VMP12WA0-0005	76	10935	11929	14041					39	5775	6301	7416	VM ON-76W / 22:00-39W / 06:00-76W SR
VMP12WA0-0006	76	10935	11929	14041					51	7508	8191	9641	VM ON-76W / 22:00-51W / 06:00-76W SR
VMP12WA0-0007	157	19867	21675	25511					76	10935	11929	14041	VM ON-157W / 00:00-76W / 06:00-157W SR
VMP12WA0-0008	157	19867	21675	25511					102	14130	15416	18145	VM ON-157W / 00:00-102W / 06:00-157W SR
VMP12WA0-0009	102	14130	15416	18145					51	7508	8191	9641	VM ON-102W / 00:00-51W / 06:00-102W SR
VMP12WA0-0010	102	14130	15416	18145					68	9895	10795	12706	VM ON-102W / 00:00-68W / 06:00-102W SR
VMP12WA0-0011	76	10935	11929	14041					39	5775	6301	7416	VM ON-76W / 00:00-39W / 06:00-76W SR
VMP12WA0-0012	76	10935	11929	14041					51	7508	8191	9641	VM ON-76W / 00:00-51W / 06:00-76W SR

Energy TRE

LED Street/Area Luminaire



Control options - Variant Z (Optics 150 - SCP)

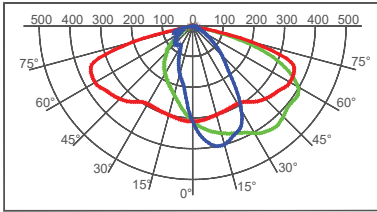
Other Setting Options are available. For more information, contact Cree Lighting Europe.

VM - VIRTUAL MIDNIGHT(Lumen package 19L)													
Setting Code	W Max	Nominal flux (lm)			W Med	Nominal flux (lm)			W Min	Nominal flux (lm)			Description
		2700K	3000K	4000K		2700K	3000K	4000K		2700K	3000K	4000K	
LUMEN PACKAGE 19L													
VMP12SA0-0013	132	16556	18062	21259	86	11775	12847	15120	64	9112	9941	11701	VM ON-132W/21:00-86W/00:00-64W/04:00-86W/06:00-132W SR
VMP12SA0-0014	86	11775	12847	15120	57	8246	8996	10588	42	6257	6826	8034	VM ON-86W/21:00-57W/00:00-42W/04:00-57W/06:00-86W SR
VMP12SA0-0015	64	9112	9941	11701	42	6257	6826	8034	33	4813	5251	6180	VM ON-64W/21:00-42W/00:00-33W/04:00-42W/06:00-64W SR
VMP12SA0-0001	132	16556	18062	21259					64	9112	9941	11701	VM ON-132W / 22:00-64W / 06:00-132W SR
VMP12SA0-0002	132	16556	18062	21259					86	11775	12847	15120	VM ON-132W / 22:00-86W / 06:00-132W SR
VMP12SA0-0003	86	11775	12847	15120					42	6257	6826	8034	VM ON-86W / 22:00-42W / 06:00-86W SR
VMP12SA0-0004	86	11775	12847	15120					57	8246	8996	10588	VM ON-86W / 22:00-57W / 06:00-86W SR
VMP12SA0-0005	64	9112	9941	11701					33	4813	5251	6180	VM ON-64W / 22:00-33W / 06:00-64W SR
VMP12SA0-0006	64	9112	9941	11701					42	6257	6826	8034	VM ON-64W / 22:00-42W / 06:00-64W SR
VMP12SA0-0007	132	16556	18062	21259					64	9112	9941	11701	VM ON-132W / 00:00-64W / 06:00-132W SR
VMP12SA0-0008	132	16556	18062	21259					86	11775	12847	15120	VM ON-132W / 00:00-86W / 06:00-132W SR
VMP12WAO-0013	86	11775	12847	15120					42	6257	6826	8034	VM ON-86W / 00:00-42W / 06:00-86W SR
VMP12SA0-0010	86	11775	12847	15120					57	8246	8996	10588	VM ON-86W / 00:00-57W / 06:00-86W SR
VMP12SA0-0011	64	9112	9941	11701					33	4813	5251	6180	VM ON-64W / 00:00-33W / 06:00-64W SR
VMP12SA0-0012	64	9112	9941	11701					42	6257	6826	8034	VM ON-64W / 00:00-42W / 06:00-64W SR

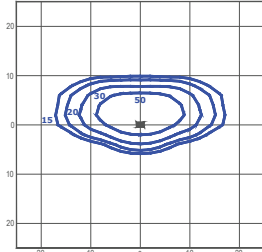
Photometry

All published luminaire photometric testing performed by an external certified ISO 17025 laboratory.
To obtain an IES file specific to your project consult: www.creelighting-europe.com

075 - Type II Short



cd/klm
C0 - C180 C90 - C270 C22.5 - C202.5



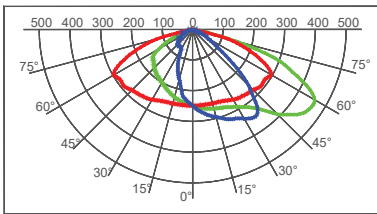
lux
TRLA-2-075-26L-407
Mounting Height: 10m

LUMEN OUTPUT - 075 (Type II Short)			
Lumen Package	2700K	3000K	4000K
	Initial Delivered Lumens*	Initial Delivered Lumens*	Initial Delivered Lumens*
26L	20637	22184	25796
23L	17689	19015	22111
19L	14740	15846	18426

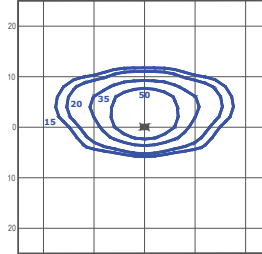
* Initial delivered lumens at 25°C (77°F). Actual production yield may vary between -4 and +10% of initial delivered lumens

Test Report #: 1251-QL21-R11

100 - Type II Short



cd/klm
C0 - C180 C90 - C270 C22.5 - C202.5



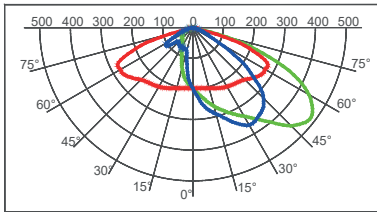
lux
TRLA-2-100-26L-407
Mounting Height: 10m

LUMEN OUTPUT - 100 (Type II Short)			
Lumen Package	2700K	3000K	4000K
	Initial Delivered Lumens*	Initial Delivered Lumens*	Initial Delivered Lumens*
26L	20619	22166	25774
23L	17674	18999	22092
19L	14728	15833	18410

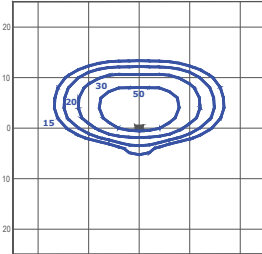
* Initial delivered lumens at 25°C (77°F). Actual production yield may vary between -4 and +10% of initial delivered lumens

Test Report #: 1251-QL21-R03

125 - Type II Short



cd/klm
C0 - C180 C90 - C270 C32.5 - C212.5



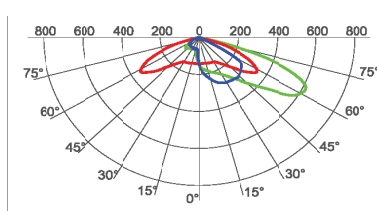
lux
TRLA-2-125-26L-407
Mounting Height: 10m

LUMEN OUTPUT -125 (Type II Short)			
Lumen Package	2700K	3000K	4000K
	Initial Delivered Lumens*	Initial Delivered Lumens*	Initial Delivered Lumens*
26L	21065	22645	26331
23L	18055	19410	22569
19L	15046	16175	18808

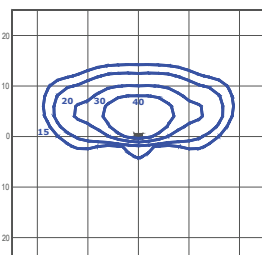
* Initial delivered lumens at 25°C (77°F). Actual production yield may vary between -4 and +10% of initial delivered lumens

Test Report #: 1251-QL21-R12

150 - Type III Short



cd/klm
C0 - C180 C90 - C270 C27.5 - C207.5



lux
TRLA-2-150-26L-407
Mounting Height: 10m

LUMEN OUTPUT - 150 (Type III Short)			
Lumen Package	2700K	3000K	4000K
	Initial Delivered Lumens*	Initial Delivered Lumens*	Initial Delivered Lumens*
26L	21008	22311	26261
23L	18007	19124	22509
19L	15006	15937	18758

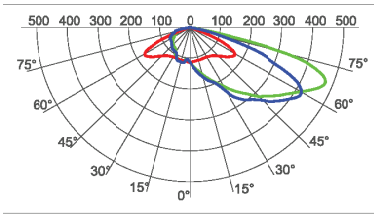
* Initial delivered lumens at 25°C (77°F). Actual production yield may vary between -4 and +10% of initial delivered lumens

Test Report #: 1038-QL21-R02

Photometry

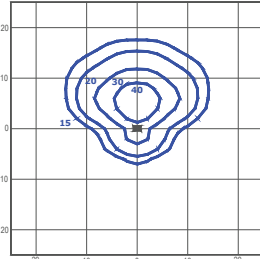
All published luminaire photometric testing performed by an external certified ISO 17025 laboratory.
To obtain an IES file specific to your project consult: www.creelighting-europe.com

200 - Type IV Short



cd/klm
C0 - C180 C90 - C270 C85 - C285

Test Report #: 1038-QL21-R03



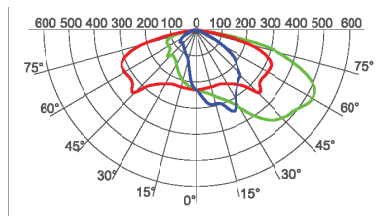
lux
TRLA-2-200-26L-407
Mounting Height: 10m

LUMEN OUTPUT - 200 (Type IV Short)

Lumen Package	2700K	3000K	4000K
	Initial Delivered Lumens*	Initial Delivered Lumens*	Initial Delivered Lumens*
26L	20415	21946	25519
23L	17499	18811	21874
19L	14582	15676	18228

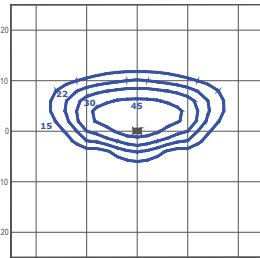
* Initial delivered lumens at 25°C (77°F). Actual production yield may vary between -4 and +10% of initial delivered lumens

SCP - Type II Short



cd/klm
C0 - C180 C90 - C270 C22.5 - C202.5

Test Report #: 1251-QL21-R08



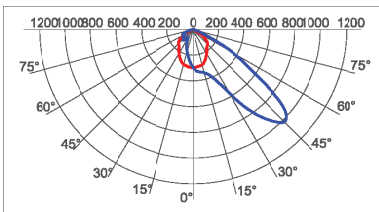
lux
TRLA-2-SCP-26L-407
Mounting Height: 10m

LUMEN OUTPUT - SCP (Type II Short)

Lumen Package	2700K	3000K	4000K
	Initial Delivered Lumens*	Initial Delivered Lumens*	Initial Delivered Lumens*
26L	20771	22059	25964
23L	17804	18908	22255
19L	14836	15757	18546

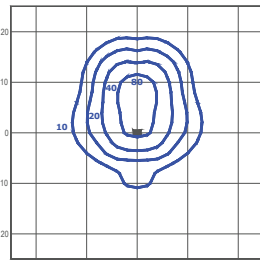
* Initial delivered lumens at 25°C (77°F). Actual production yield may vary between -4 and +10% of initial delivered lumens

AFN - Area Flood Narrow



cd/klm
C0 - C180 C90 - C270 C135 - C315

Test Report #: 1038-QL21-R04



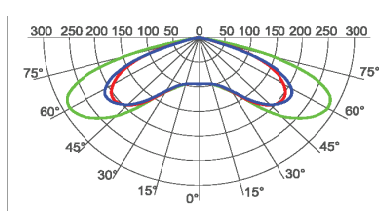
lux
TRLA-2-AFN-26L-407
Mounting Height: 10m

LUMEN OUTPUT - AFN (Area Flood Narrow)

Lumen Package	2700K	3000K	4000K
	Initial Delivered Lumens*	Initial Delivered Lumens*	Initial Delivered Lumens*
26L	21411	23017	26764
23L	18352	19729	22941
19L	15294	16441	19117

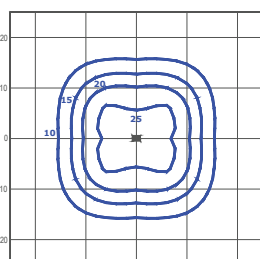
* Initial delivered lumens at 25°C (77°F). Actual production yield may vary between -4 and +10% of initial delivered lumens

ARS - Roto-Symmetric Area



cd/klm
C0 - C180 C90 - C270 C135 - C315

Test Report #: 1038-QL21-R05



lux
TRLA-2-ARS-26L-407
Mounting Height: 10m

LUMEN OUTPUT - ARS (Roto-Symmetric Area)

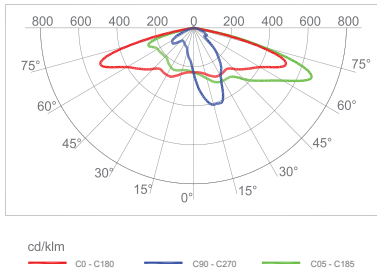
Lumen Package	2700K	3000K	4000K
	Initial Delivered Lumens*	Initial Delivered Lumens*	Initial Delivered Lumens*
26L	21118	22702	26398
23L	18102	19459	22627
19L	15085	16216	18856

* Initial delivered lumens at 25°C (77°F). Actual production yield may vary between -4 and +10% of initial delivered lumens

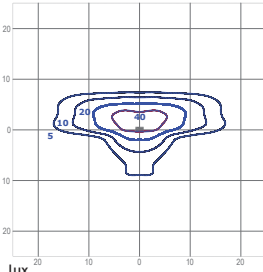
Photometry

All published luminaire photometric testing performed by an external certified ISO 17025 laboratory.
To obtain an IES file specific to your project consult: www.creelighting-europe.com

K07 - Narrow Street



Test Report #: 403-QL22-S05

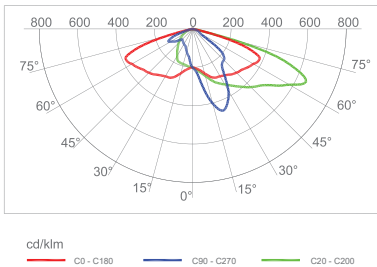


TRLA-2-K07-26L-407
Mounting Height: 10m

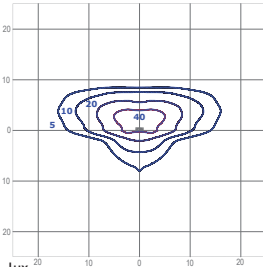
LUMEN OUTPUT - K07 (Narrow Street)			
Lumen Package	2700K	3000K	4000K
	Initial Delivered Lumens*	Initial Delivered Lumens*	Initial Delivered Lumens*
26L	21498	24343	27027
23L	18427	20865	23166
19L	15356	17388	19305

* Initial delivered lumens at 25°C (77°F). Actual production yield may vary between -4 and +10% of initial delivered lumens

K10 - Medium Street



Test Report #: 403-QL22-S06

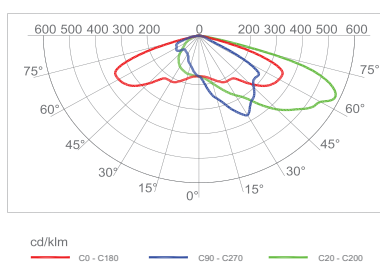


TRLA-2-K10-26L-407
Mounting Height: 10m

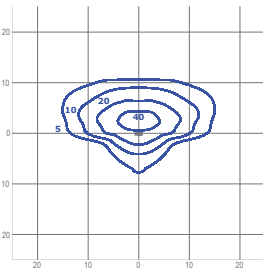
LUMEN OUTPUT - K10 (Medium Street)			
Lumen Package	2700K	3000K	4000K
	Initial Delivered Lumens*	Initial Delivered Lumens*	Initial Delivered Lumens*
26L	21518	24366	27052
23L	18444	20885	23188
19L	15370	17404	19323

* Initial delivered lumens at 25°C (77°F). Actual production yield may vary between -4 and +10% of initial delivered lumens

K12 - Broad Street



Test Report #: 403-QL22-S07



TRLA-2-K12-26L-407
Mounting Height: 10m

LUMEN OUTPUT - K12 (Broad Street)			
Lumen Package	2700K	3000K	4000K
	Initial Delivered Lumens*	Initial Delivered Lumens*	Initial Delivered Lumens*
26L	21063	23850	26480
23L	18054	20443	22697
19L	15045	17036	18914

* Initial delivered lumens at 25°C (77°F). Actual production yield may vary between -4 and +10% of initial delivered lumens