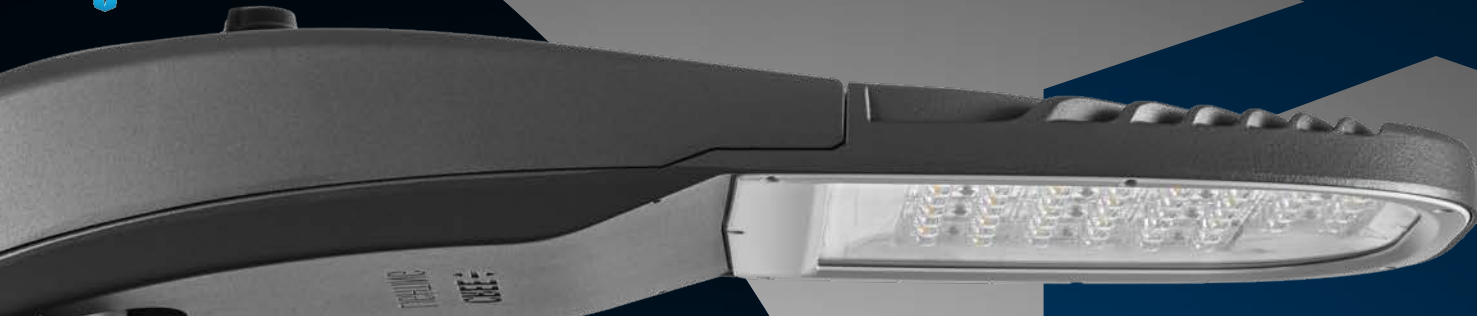




Advanced
LIGHTING TECHNOLOGIES



Energy series

**ENGINEERED
TO EXCEED
EXPECTATIONS.**

Embrace the future, now.

Energy

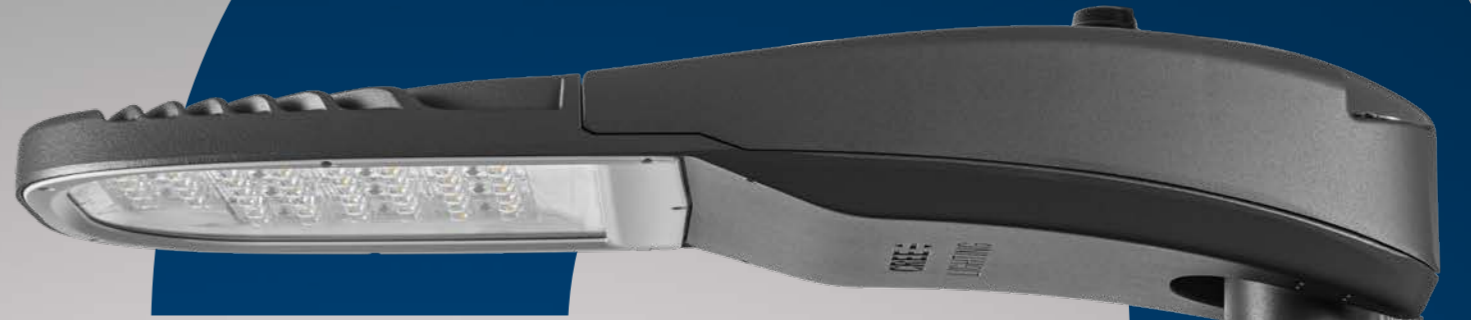
CREE  LIGHTING



EnergyUNO

EnergyDUE

EnergyTRE



**TECHNOLOGY AND
PERFORMANCE**



OUTSTANDING
COMBINATION OF



TECHNOLOGY AND
PERFORMANCE



MADE IN ITALY

Energy series continues the Cree Lighting approach to traditional city lighting applications. The fixture remains sympathetic to its environment, wherever it's installed.

Light a Better Way.



ENERGY FOR MUNICIPALITIES

Outdoor lighting is often met with challenges that vary from project to project and from location to location. Our products work hard for the designer in an urban context, where performance and efficiency are not the only considerations.

It's light that's easy to live with.

QUALITY BY DESIGN

Energy Series streetlights have been engineered and tested to ensure superior performance; to guarantee our clients the highest value in terms of quality - **performance ratio.**



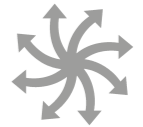
BUILT FOR TODAY, READY FOR THE FUTURE

Innovation has always been our compass for almost a quarter of a century. Over these years we have revolutionised the lighting industry by making LEDs with the highest quality, **environmentally friendly** by making the highest quality, environmentally friendly LEDs available to everyone. Today, we are at the forefront of the development of customer-friendly LED solutions that can dramatically improve cities, workspaces and the environment in all areas. Step by step, our product lines are growing and adding new pieces to our history of innovation and our experience as a manufacturer of top-quality pleasant, effective and intelligent light.

BUILT FOR SMART CITIES

ENERGY LED luminaires were designed with communities in mind.

Members of your community need lighting that enhances the aesthetics and safety of their surroundings and, at the same time, a rugged construction to ensure their longevity.



DURABILITY

A product that is flawless in terms of performance and design; engineered with a lightweight and reliable body, great attention has been paid to the selection of materials to ensure the entire assembly process is reliable. The fixture is made of die-cast aluminum and has an impact strength rating of IK10 and a water rating of **IP66**.

EFFICIENCY

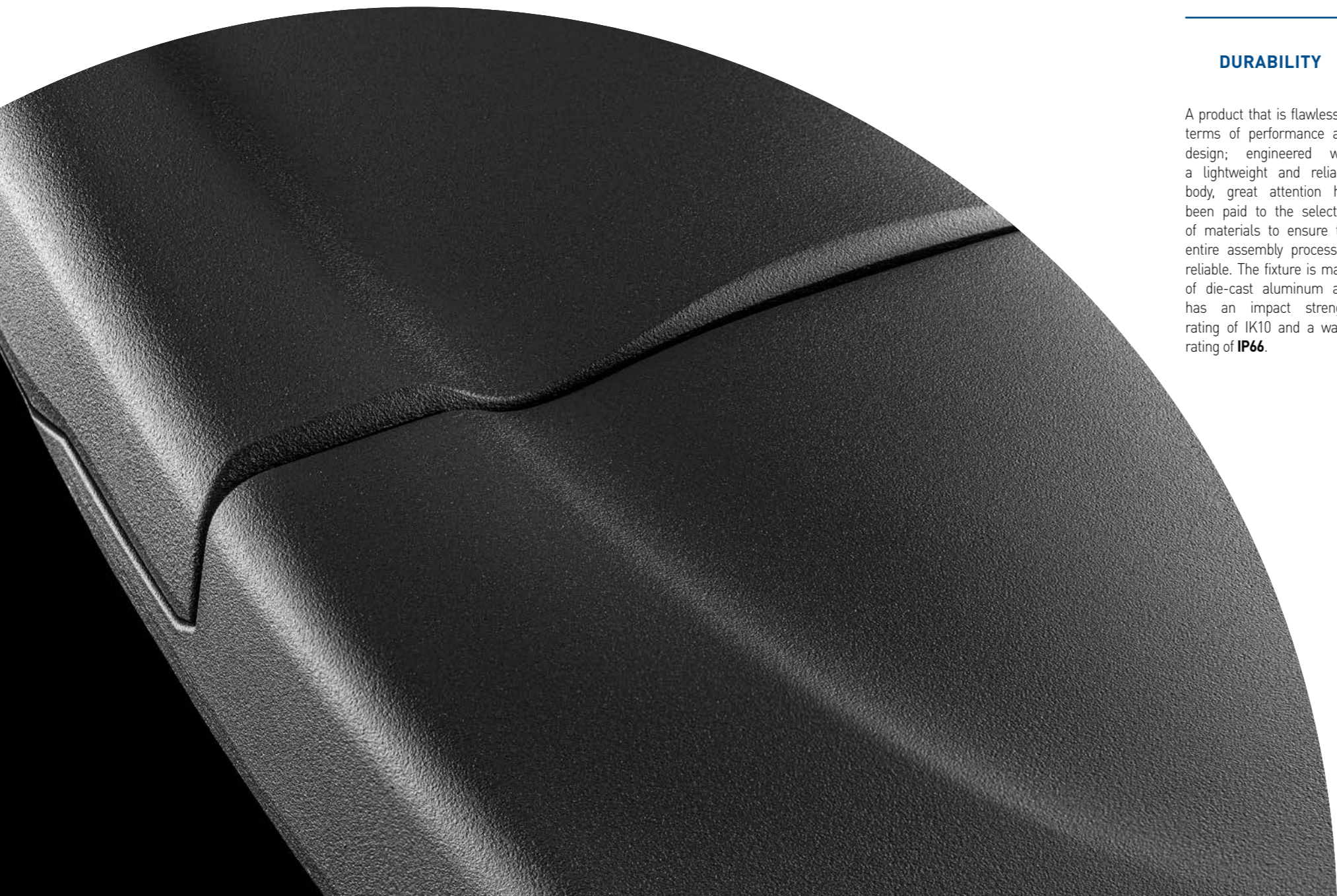
The fixture has the highest performance rating on the market, drastically reducing energy consumption. It's high quality design ensures the optimal use of the light source which not only **increases efficiency**, it improves the quality of the light and **protects the environment**.

INNOVATION & TECHNOLOGY

Innovation in Mind. The Energy series has been developed to deliver both optimisation and energy savings, making it one of the best on the market as it delivers **unbeatable value**. The Energy series can easily integrate sensors and control systems. These control options allow the creation of pleasant night time environments, minimising light pollution and maximising energy savings - all whilst monitoring the system and capturing data.

FLEXIBILITY & VERSATILITY

A lightweight body and simple installation are two important strengths of the Energy series. The product can be **installed easily** and reliably and, thanks to the flexibility of the tenon design, can be adjusted, 20°, in 5° increments. Cree Lighting keeps any impact on the environment to a minimum: preserving the form of our cities during the day and enhancing their beauty at night. It's all thanks to modernising the current technology with energy efficient, low maintenance LEDs.



**THE SHAPE YOU KNOW WITH
THE PERFORMANCE YOU NEED.**



Cree Lighting wants to keep the impact on the environment to a minimum level while preserving the form of our cities during the day, but modernize the incumbent technology with **energy-efficient**, low-maintenance LED solutions to enhance their beauty at night.

Just what you would expect from Cree Lighting.

CHOOSE YOUR COLOUR



ENERGY IS FUTURE-PROOF

GUARANTEED SUSTAINABLE
PRODUCTION AND CONSUMPTION
MODELS; PROMOTE ACTIONS,
AT ALL LEVELS,
TO FIGHT CLIMATE CHANGE.

Cree Lighting has always been committed to the highest standards of quality and environmental performance: always guaranteeing excellence.

From our initial concept design, Cree Lighting has been a pioneer that revolutionised the industry through the development of **eco-friendly** LED technologies that guarantee energy savings and full compliance with standards. We are now building the future for **Centric Lighting**.

The choice of materials used is also of strategic importance to Cree Lighting. We care about the materials taken from the planet and how these are returned at the end of a product's lifespan. In fact we go even further than **simply recycling** a product: we measure Material Circularity - analysing materials from their origin, to disassembly, and on to their final destination.



INSTALLER & MAINTENANCE FRIENDLY

Installation and maintenance of your street lighting should be as simple as possible.

The Energy Series was designed with this in mind; with its slim, lightweight body and quick connection features, the product can be easily installed in a few minutes.



ADJUSTABLE TENON

The hassle-free design of the Energy luminaire includes simplified mounting solutions: horizontal tenon mount or adjustable arm to allow for fixture leveling of -20° + 110°.



FUTURE-READY TODAY

An innovative and advanced technology provides exceptional strength in terms of thermal performance, energy saving, exemplary sustainability. It is increasingly adopted in hi-tech where the data management is a key factor to success in the market.

Energy series is powered by the latest LED module technology which delivers efficiency up to 160lm/W making Energy the best in class on the market.

SUSTAINABILITY

Our LED luminaires not only last longer, reducing the amount of energy and resources required for maintenance, they also need less energy, making Cree Lighting an ideal opportunity for cities to meet sustainable goals.

Energy Series - LED Street/Area Luminaire

Product description

Ease of installation, extended service life and optimal system management were the guidelines for the design of the conception of the Energy Series. Designed as a complete street lighting system optimized for LED light sources, it is distinguished by its extraordinary efficiency. Optimised for LED light sources, it stands out for its outstanding efficiency. Energy provides the best lighting solution in every situation thanks to its modular design. Energy guarantees the best lighting solution in every situation thanks to its modular system consisting of three product sizes, four lumens package per size, a complete optical repertoire, flux adjustment options and a wide range of light sources. A comprehensive optical repertoire, stand-alone flow control options and Zhaga connectivity.

Via the adjustable joint the luminaire can be mounted on a pole or bracket with an external diameter of 60mm, with the possibility of adjustment ranges from -20° to +110° with a scale of +/-20° and increments of 5°. Adjustments can be done from outside without having to open the product cover.

Applications: Urban and internal roads, pedestrian walkways and car parks.

PERFORMANCE SUMMARY

- Utilizes **full cut-off optics** conforming to **Zhaga Book 15**
- Efficacy:** Up to 160 lm/W
- Limited Warranty:** 5 years (*Extended Warranty Available*)
- IP Rating:** IP66
- IK Rating:** IK10
- Optics:** 075, 100, 125, 150, 200, SCP, AFN, ARS, PCR, PCL
- CRI:** 2200K*, 2700K, 3000K @Ra80 and 4000K, 5700K* Ra70 (*On request for MOQ) CRI Standard min. 70, CRI80 @3000K
- Control Option:** Virtual Midnight (chronoSTEP reprogrammable via mains), DALI 2, Constant Flux, Flux Regulator, Lineswitch, D4i

CONSTRUCTION & MATERIALS

- Die-cast aluminum body with low copper content
- Power supply compartment accessible without the use of tools
- Knife disconnecter
- 4mm thick ultra clear transparent glass protection screen
- Replaceable PMMA lenses
- Replaceable LED board equipped with ESD protection
- Luminaire assembled without the use of adhesives, completely disassembled and recyclable

REGULATORY & VOLUNTARY QUALIFICATIONS

- Warranty: 5 years (extended warranty available upon request)
- CE mark/CB mark/ENEC mark/RoHS/RCM mark
- Risk group exempt in accordance with Standard CEI EN 62471 for photobiological safety (Tested IEC/TR62778)
- Compliant to: EN 60598-1; EN 60598-2-3
- Lead-free powder coatings with excellent exterior durability, conforms to the requirements:
 - Adhesion - test comply with ISO 2409
 - Salt spray - test NSS comply with ISO 9227
- Accelerated weathering - test UV comply with ISO 16474-2 (ex ISO 11507)
- Constant humidity - test comply with ISO 6270-1



FIND OUT HERE THE TECHNICAL SHEETS OF PRODUCTS



PERFORMANCE

Every aspect of the ENERGY Series has been innovated to deliver outstanding illumination, lasting performance and optimum energy efficiency.



Lumen Output @40K





CREE ⇄ **LIGHTING**

© 2021 CREE LIGHTING ALL RIGHTS RESERVED.
FOR INFORMATION PURPOSES ONLY. THE CONTENT IS SUBJECT TO CHANGES.
PATENTS WWW.CREELIGHTING.COM/PATENTS
CREE® AND THE CREE LIGHTING LOGO ARE REGISTERED TRADEMARKS AND
THE CREE WAVEMax® TECHNOLOGY LOGO IS A CREE, INC. LOGO.

Advanced Lighting Technologies Australia Inc
Advanced Lighting Technologies New Zealand Ltd
Advanced Lighting Technologies Asia Pte Ltd

Australia
New Zealand
Singapore

+61 3 9800 5600
+64 9 415 6332
+65 6844 2338

www.adlt.com.au
www.adlt.co.nz
www.adlt.com.sg