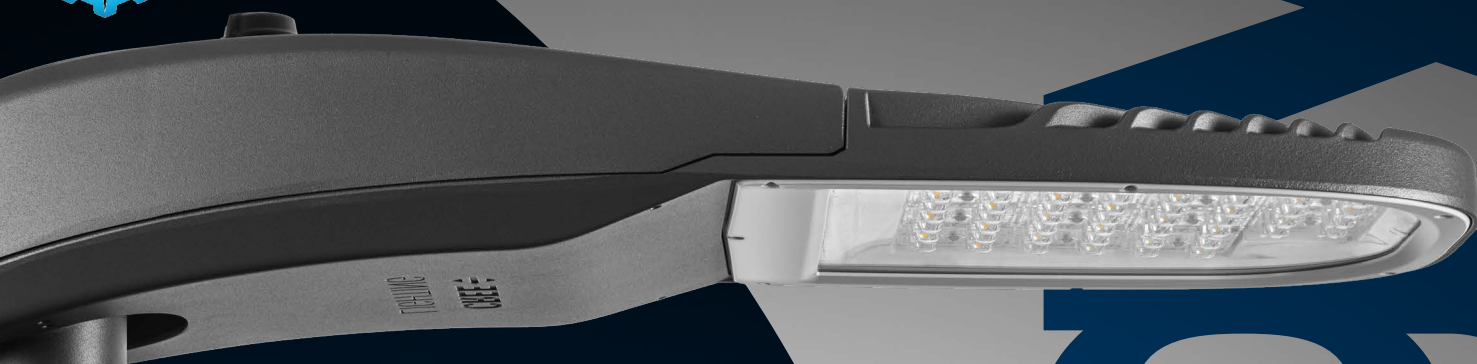




**Advanced**  
LIGHTING TECHNOLOGIES



# Energy series

**ENGINEERED  
TO EXCEED  
EXPECTATIONS.**

Embrace the future, now.

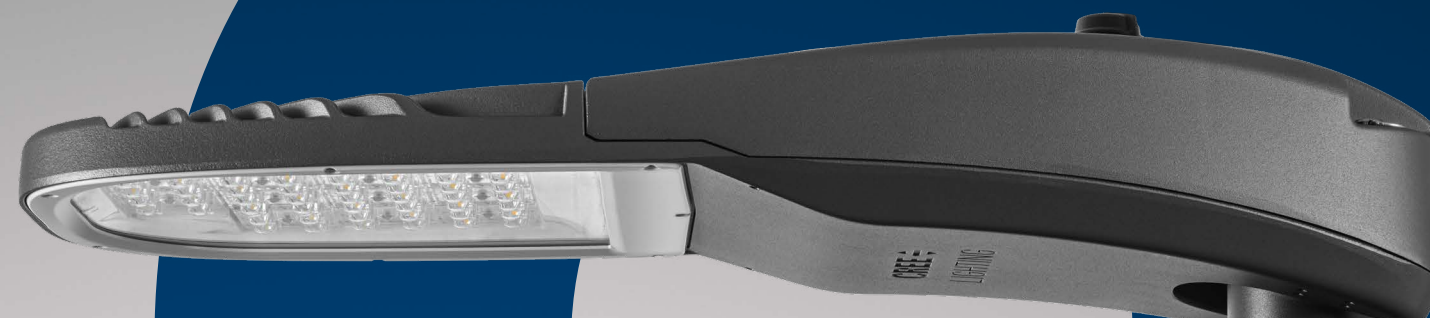
**CREE**  **LIGHTING**



**Energy**UNO

**Energy**DUE

**Energy**TRE



TECHNOLOGY AND  
PERFORMANCE





OUTSTANDING  
COMBINATION OF



TECHNOLOGY AND  
PERFORMANCE





## MADE IN ITALY

The Energy Series exemplifies Cree Lighting Europe's commitment to enhancing traditional city lighting applications. Designed with a thoughtful approach, each fixture seamlessly integrates into its surroundings, harmonizing with the environment wherever it is installed.

**Light a Better Way.**



## ENERGY FOR MUNICIPALITIES

Outdoor lighting often presents unique challenges that differ from project to project and location to location. Our products are designed to excel in urban environments, where they go beyond delivering performance and efficiency to meet the nuanced needs of designers and their creative visions.

It's light that's easy to live with.





## QUALITY BY DESIGN

Energy Series streetlights are meticulously engineered and rigorously tested to deliver superior performance, ensuring our clients receive exceptional value with an optimal balance of quality and performance.





## BUILT FOR TODAY, READY FOR THE FUTURE

For nearly a quarter of a century, innovation has been our guiding principle. During this time, we have transformed the lighting industry by making high-quality, environmentally friendly LEDs accessible to everyone.

Today, we lead the way in developing user-centric LED solutions that have the power to transform cities, workspaces, and the environment across all sectors. Step by step, we continue to expand our product lines, enriching our legacy of innovation and expertise as a trusted manufacturer of superior, effective, and intelligent lighting solutions.

## BUILT FOR SMART CITIES

ENERGY LED luminaires are thoughtfully designed with communities in mind, prioritizing functionality, aesthetics, and sustainability to enhance shared spaces.

Members of your community deserve lighting that not only enhances the aesthetics and safety of their surroundings but also offers durable construction to ensure long-lasting performance and reliability.



### DURABILITY

A product that embodies flawless performance and design, the fixture is meticulously engineered with a lightweight yet durable body. Every detail, from material selection to assembly, has been carefully considered to ensure reliability throughout the manufacturing process. Crafted from die-cast aluminum, it boasts an exceptional impact strength rating of **IK10** and a robust water resistance rating of **IP66**, making it a dependable solution for any environment.



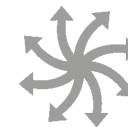
### EFFICIENCY

The fixture sets a new standard with its market-leading performance rating, significantly reducing energy consumption. Its high-quality design optimizes the use of the light source, enhancing efficiency, delivering **superior light quality**, and contributing to environmental protection.



### INNOVATION & TECHNOLOGY

Innovation in Mind. The Energy Series is designed to deliver exceptional optimization and energy savings, positioning it as one of the best solutions on the market, offering unparalleled value. With seamless integration of sensors and control systems, the Energy Series takes urban lighting to the next level. These advanced control options create inviting nighttime environments, reduce light pollution, and maximize energy efficiency—all while enabling system monitoring and data collection to support smarter, more sustainable cities.



### FLEXIBILITY & VERSATILITY

The Energy Series boasts a lightweight design and straightforward installation, offering key advantages in flexibility and versatility. The innovative tenon design allows for precise adjustments from -20° to +20° in 5° increments, ensuring reliable and customizable installation.

Cree Lighting Europe is committed to minimizing environmental impact by preserving the character of our cities during the day and enhancing their beauty at night. This is achieved through the integration of modernized technology, featuring energy-efficient, low-maintenance LEDs that redefine urban lighting solutions.



# THE SHAPE YOU KNOW WITH THE PERFORMANCE YOU NEED.

Cree Lighting Europe is dedicated to minimizing environmental impact while preserving the character of our cities during the day. By modernizing existing technology with energy-efficient, low-maintenance LED solutions, we aim to enhance the beauty of urban spaces at night, creating a balance between sustainability and aesthetics.

**Just what you would expect  
from Cree Lighting Europe.**



## CHOOSE YOUR COLOUR





## ENERGY IS FUTURE-PROOF

GUARANTEED SUSTAINABLE  
PRODUCTION AND CONSUMPTION  
MODELS; PROMOTING ACTIONS AT  
ALL LEVELS TO COMBAT CLIMATE  
CHANGE.

Cree Lighting Europe has consistently upheld the highest standards of quality and environmental performance, ensuring excellence in every product we deliver.

From our initial concept design, Cree Lighting Europe has been a pioneering force, revolutionizing the industry with the development of **eco-friendly** LED technologies that ensure energy savings and full compliance with industry standards. Today, we are shaping the future of **Human Centric Lighting**, leading the way in sustainable, innovative solutions.

At Cree Lighting Europe, the choice of materials is a key strategic priority. We are deeply committed to sourcing materials responsibly and ensuring they are properly returned at the end of a product's lifecycle. Our approach goes beyond simple recycling; we measure Material Circularity, carefully analyzing materials from their origin, through disassembly, and all the way to their final destination. This comprehensive approach helps us minimize environmental impact and promote sustainability throughout the entire product lifecycle.





## INSTALLER & MAINTENANCE FRIENDLY

Installation and maintenance of street lighting should be as straightforward as possible.

With this in mind, the Energy Series is designed with a slim, lightweight body and quick connection features, allowing for easy installation in just a few minutes.



## ADJUSTABLE TENON

includes simplified mounting solutions: horizontal or vertical attachment with adjustable arm to allow the device to be adjusted from -20° to + 110° with a graduated scale of +/-20° and increments of 5°.

## FUTURE-READY TODAY

The Energy Series incorporates innovative, advanced technology that ensures exceptional thermal performance, energy savings, and exemplary sustainability.

Its cutting-edge design is increasingly adopted in high-tech applications, where data management plays a crucial role in market success. Powered by the latest LED module technology, the Energy Series achieves an impressive efficiency of up to 180lm/W, making it the best-in-class lighting solution on the market.

## SUSTAINABILITY

Our LED luminaires are designed to last longer, reducing the need for frequent maintenance and minimizing the energy and resources required.

With lower energy consumption, Cree Lighting Europe offers cities an ideal solution to help achieve their sustainability goals while enhancing efficiency and reducing environmental impact.





# Energy Series - LED Street/Area Luminaire

## Product description

The Energy Series was designed with ease of installation, extended service life, and optimal system management as key priorities. Engineered as a complete street lighting solution optimized for LED light sources, it stands out for its exceptional efficiency. Thanks to its modular design, Energy delivers the ideal lighting solution for any environment. The system features three product sizes, four lumen packages per size, a comprehensive optical selection, flux adjustment options, and a wide range of compatible light sources. It also includes stand-alone flow control options and Zhaga connectivity, ensuring versatility and future-proof integration. The luminaire can be easily mounted on poles or brackets with external diameters of 60mm or 76mm, using an adjustable joint. The mounting offers a range of adjustments from -20° to +110°, with precise increments of 5° and a scale of +/-20°. All adjustments can be made externally, without the need to open the product cover, making installation and maintenance simple and efficient.

**Applications:** Urban and internal roads, pedestrian walkways and car parks.

### PERFORMANCE SUMMARY

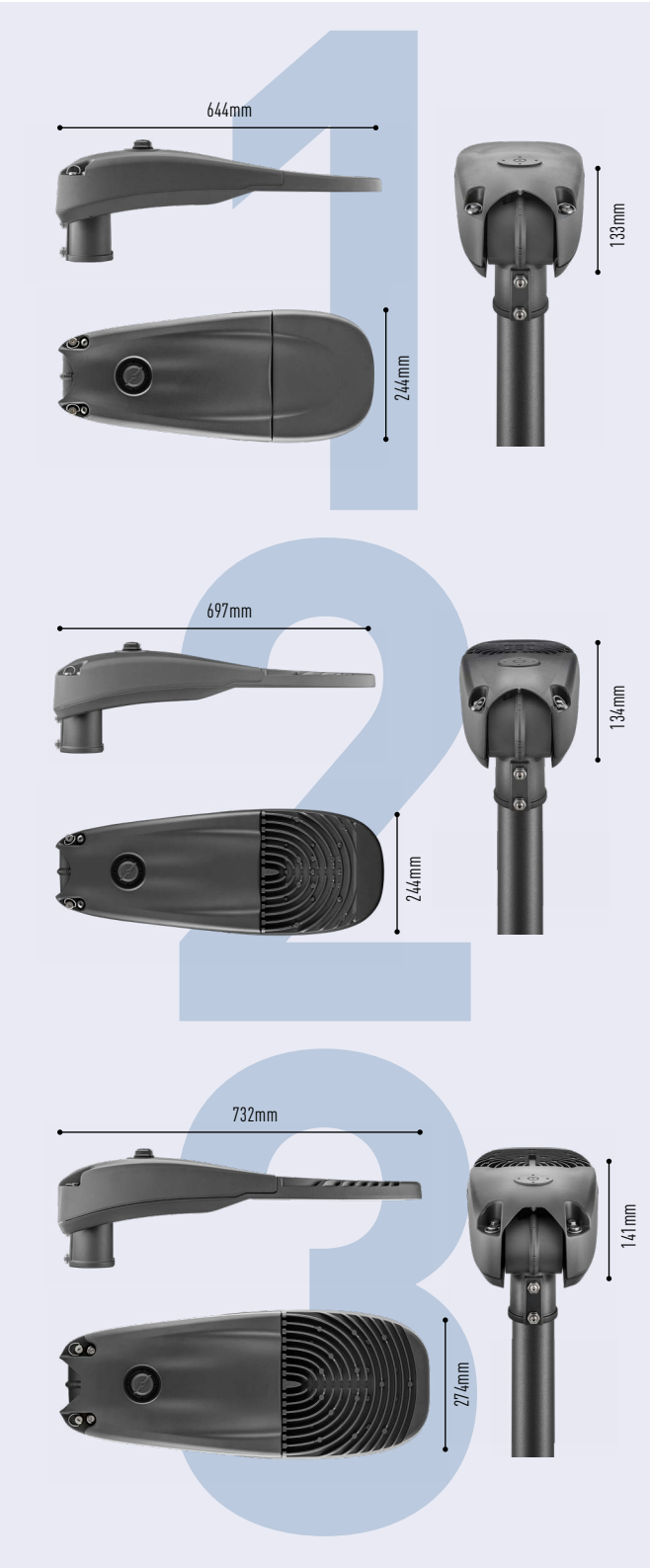
- Available with NanoComfort® precision optical system
- Efficacy: Up to 180 lm/W
- IP Rating: IP66
- IK Rating: IK10
- Optics: K07/K08/K09/K10/K11/K12/100/125/150/200/SCP/PCR/PCL/P05/P25
- CCT: 2200K, 2700K, 3000K, 4000K Ra70
- Control Options: Virtual Midnight, DALI 2, D4i

### CONSTRUCTION & MATERIALS

- Die-cast aluminum body EN 47100 (copper content <0.7%). Aluminum alloy EN AB 44300 (copper content <0.1%) available as an option.
- Power supply compartment accessible without the use of tools
- Knife switch
- Ultra-clear 4mm tempered glass with anti-reflective coating
- Replaceable PMMA lenses
- Replaceable LED board equipped with ESD protection
- Luminaire assembled without the use of adhesives, completely disassembled and recyclable

### WARRANTY AND CERTIFICATIONS

- Warranty: 5 years / 10 years on request
- CE / CB / RoHS / ENEC
- Exempt risk class [EN 62471]
- Compliant to: EN 60598-1; EN 60598-2-3
- Lead-free powder coatings with excellent exterior durability, conforms to the requirements:
  - Adhesion - test compliant with ISO 2409
  - Salt spray - test NSS comply with ISO 9227
  - Accelerated Weathering - test UV compliant with ISO 16474-3 (ex ISO 11507)
  - Constant humidity - test compliant with ISO 6270-1



# PERFORMANCE

Every aspect of the ENERGY Series has been conceived to deliver outstanding illumination, lasting performance and optimum energy efficiency.



Lumen Output @4000K







**CREE** ⇄ **LIGHTING**

© 2024 Cree Lighting Europe S.p.A. All rights reserved.  
For informational purposes only. Content is subject to change.  
Cree® and the Cree Lighting Europe® logo are registered trademarks  
and the Cree SmartCast Technology® Logo is a trademark of Cree, Inc

Advanced Lighting Technologies Australia Inc  
Advanced Lighting Technologies New Zealand Ltd  
Advanced Lighting Technologies Asia Pte Ltd

Australia  
New Zealand  
Singapore

+61 3 9800 5600  
+64 9 415 6332  
+65 6844 2338

[www.adlt.com.au](http://www.adlt.com.au)  
[www.adlt.co.nz](http://www.adlt.co.nz)  
[www.adlt.com.sg](http://www.adlt.com.sg)