

Energy DUE

LED Street/Area Luminaire



CREE LIGHTING

Product Description

Designed as a complete street lighting system and optimized for LED light sources, it is distinguished by its extraordinary efficiency. Energy DUE provides the best lighting solution. Developed with three product sizes, four lumens package per size, a complete optical range, flux adjustment options and a wide range of light sources together with a comprehensive optical range, stand-alone flow control options and Zhaga connectivity. Energy can be mounted on a pole or bracket with an external diameter of 60mm, the adjustment ranges from -20° to +110° with a scale of +/-20° and increments of 5°. Adjustments can be done from outside without having to open the product cover.

Applications: Urban and internal roads, pedestrian walkways and car parks.

Performance Summary

- Efficacy:** up to 160lm/W
- Initial Delivered LED Lumens:** up to 15100lm
- Lifetime color consistency:** 4SDM
- Limited Warranty:** 5 years on luminaire
Extended warranty (up to 10 years) available for approved projects. Contact ADLT for further information.



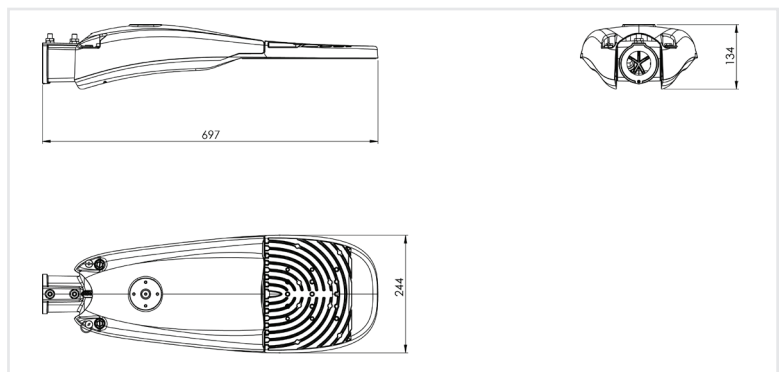
Eg: TRMA-2-K07-9L-407-+-A-SG-FX-S-S-00+ FXA10HA0-0001

Ordering Information

TRMA	2	K07	9L	228	+	A	SG	FX	S	S	00
Product	Mounting	Optic	Lumen Package	CCT	Insulation Class	Voltage	Finish	Options	Variant	Protection	Cable length
TRMA	2 horiz/vert tenon 60mm	K07 NanoComfort Narrow Street	9L Up to 10000lm	228* 2200K CRI80	+ Class 1 ^ Class 2	A 220-240V	BK Black Textured SV Silver Textured SG Sapphire Gray WH* White Textured	FX Fixed Output	S No socket / No sensor N* Nema Socket 7 pin	S By Driver SF* Standard +Fuse U 10 kV UF* 10kV+Fuse	00 Standard no cable 01 Exit Cable 1 m 03* Exit Cable 3 m 06* Exit Cable 6 m 10* Exit Cable 10 m
		K10 NanoComfort Medium Street	11L Up to 11000lm	278* 2700K CRI80				VM Virtual Midnight			
		K12 NanoComfort Broad Street	13L Up to 13000lm	308 3000K CRI80				DL DALI			
		075 Narrow Street 0.75 (T2S)	15L Up to 15000lm	407 4000K CRI70				CL Constant Lumen			
		100 Medium Street 1.00 (T2S)						VMC Virtual Midnight+ Constant Lumen			
		125 Comfort Street 1.25 (T2S)									
	3 horiz/vert tenon 76mm	150 Wide Street 1.50 (T3S)			577* 5700K CRI70	FX Fixed Output	Z Zhaga Socket/ D4i driver				
		200 Extra Wide Street 2.00 (T4S)				VM Virtual Midnight					
		SCP Street & Cycle Path class P(T2S)				CL Constant Lumen					
		AFN Area Flood Narrow				VMC Virtual Midnight+ Constant Lumen					
		ARS Roto-Symmetric Area									
		PCR Pedestrian Crossing Right									
PCL Pedestrian Crossing Left											

*Denotes non-standard option. MOQ & longer lead time may apply. Contact ADLT for more information.

ADAPTER	
KIT-TRS-AP60-42-48-V0	Fitter kit to mount to 42 & 48 mm tenon



Energy DUE

LED Street/Area Luminaire



CREE LIGHTING

FEATURES

- Available with NanoComfort® precision optical system
- LED Lumen output up to 15100lm
- Zhaga Book 15 compliant LED module efficiency (excluding optical system): ≥ 185 lm/W
- Luminaire efficiency (including optical losses): up to 160 lm/W
- CCT: 4000K, Ra70, 3000K Ra80 (2200K, 2700K, 3000K Ra70, on request)
- Initial Chromatic Selection: ≤ 4 -Step MacAdam ellipse or $\Delta u'v' \leq 0.003$ (LM80:08)
- Luminous flux maintenance factor: L97B10 up to 100,000 hours $T_a=25^\circ\text{C}$ (According to IESNA TM-21)
- Degree of protection optical compartment and wiring compartment: IP66 (IEC 60529)
- Optical compartment and wiring compartment impact resistance: \geq IK10 (EN 62262)
- Overvoltage protection: up to 10kV CM/DM according to EN 61000-4-5 and EN 61547
- Driver equipped with over-temperature protection for optimal performance and safety
- Power factor: ≥ 0.98 at full load
- Operating temperature: -40°C up to $+50^\circ\text{C}$
- Control options: Virtual Midnight and Constant Light Protocol are adjustable via the main, DALI 2, D4i
- Available with fuse and 20mm Zhaga Book 18 connector
- SPD with LED fault indicator (Standard in class 1, available on request in Class 2)
- Backlight control accessory available on request for selected lenses

CONSTRUCTION AND MATERIALS

- Die-cast aluminum body with low copper content
- Power supply compartment accessible without the use of tools
- Toolless removable wiring plate
- Knife disconnecter
- 4mm thick ultra clear transparent glass protection screen
- Replaceable PMMA lenses
- Replaceable LED board equipped with ESD protection
- Cable type H07RN-F (Cable length up to 10m)
- Easy installation: wiring compartment installed on the cover and pre-assembled integrated joint - to install the luminaire it is not necessary to open it if outgoing cable version,
- Practicality in ordinary and extraordinary maintenance: power supply compartment accessible and component holder plate removable without tools; lenses and LEDs easily removable and replaceable using a single tool.
- Luminaire assembled without the use of adhesives, completely disassembled and recyclable

WARRANTY AND CERTIFICATIONS

- Warranty: 5 years
- CE /CB /ENEC/RoHs/RCM
- Risk group exempt
- Compliant to: EN 60598-1; EN 60598-2-3
- Lead-free powder coatings with excellent exterior durability, conforms to the requirements :
 - Adhesion - test comply with ISO 2409
 - Salt spray - test NSS comply with ISO 9227
 - Accelerated Weathering - test UV comply with ISO 16474-2 (ex ISO 11507)
 - Constant humidity - test comply with ISO 6270-1

GENERAL DATA*

Lumen Package	System Watts 220-240V	Total Current	Power Factor
		@230V, 50Hz	
9L	67W	0.30	0.97
11L	81W	0.36	0.97
13L	95W	0.42	0.98
15L	106W	0.47	0.98

* Electrical data at 25°C (77°F)

WEIGHT

WEIGHT	7,5 Kg
--------	--------

LMF LUXEON - RECOMMENDED LUMEN MAINTENANCE FACTORS (LMF)¹

Ambient	LMF iniziale	25K hr Projected ² LMF	50K hr Projected ² LMF	75K hr Calculated ³ LMF	100K hr Calculated ³ LMF
25°C	1	0,97	0,94	0,92	0,90

LMF DURIS - RECOMMENDED LUMEN MAINTENANCE FACTORS (LMF)¹

Ambient	LMF iniziale	25K hr Projected ² LMF	50K hr Projected ² LMF	75K hr Calculated ³ LMF	100K hr Calculated ³ LMF
25°C	1	0,99	0,98	0,98	0,97

¹Lumen maintenance values calculated at 25°C, with TM-21 based on LM-80 data and on-site testing. DURIS for SCP optic 150 - PCR- PCL and LUXEON for K07, K10, K12, 075, 100, 125 - 200 - AFN - ARS optics.
²In accordance with IESNA TM-21-11, the values shown in the "projected" column represent interpolated and arc values within six times (6X) the total duration in hours of the tests (performed according to IESNA LM-80-08) to which the device has been subjected ([DUT] e.g. the LED chip).
³In accordance with IESNA TM-21-11, the values shown in the column "calculated" are calculated based on a time span greater than six times (6X) the total duration in hours of the tests (performed according to IESNA LM-80-08) to which the device has been subjected ([DUT] e.g. the LED chip).

ZHAGA OPTIONS AVAILABLE

FX-Z	Zhaga Book 18 connector & D4i driver combined with FX programs (Fixed Power)
VM-Z	Zhaga Book 18 connector & D4i driver combined with VM programs (Virtual Midnight)
CL-Z	Zhaga Book 18 connector & D4i driver combined with CL programs (Constant Light Output)
VMC-Z	Zhaga Book 18 connector & D4i driver combined with VM+CL

Control options - Variant S - N(Optics K07 - K10 - K12 - 075 - 100 - 125 - 200 - AFN - ARS)

Other Setting Options are available. For more information, contact Cree Lighting Europe.

FX - FIXED OUTPUT					
Setting Code	System Watts W	Nominal flux (lm)			Description
		2700K	3000K	4000K	
LUMEN PACKAGE 15L					
FXA110A0-0001	106	13522	15312	17000	FIXED OUTPUT 106W
FXA110A0-0002	69	9831	11132	12359	FIXED OUTPUT 69W
FXA110A0-0003	52	7667	8682	9639	FIXED OUTPUT 52W
LUMEN PACKAGE 13L					
FXA11MA0-0001	95	11832	13398	14875	FIXED OUTPUT 95W
FXA11MA0-0002	62	8602	9740	10814	FIXED OUTPUT 62W
FXA11MA0-0003	46	6709	7597	8434	FIXED OUTPUT 46W
LUMEN PACKAGE 11L					
FXA11KA0-0001	81	10142	11484	12750	FIXED OUTPUT 81W
FXA11KA0-0002	53	7373	8349	9269	FIXED OUTPUT 53W
FXA11KA0-0003	40	5750	6511	7229	FIXED OUTPUT 40W
LUMEN PACKAGE 9L					
FXA11IA0-0001	67	8451	9570	10625	FIXED OUTPUT 67W
FXA11IA0-0002	44	6144	6957	7724	FIXED OUTPUT 44W
FXA11IA0-0003	33	4792	5426	6024	FIXED OUTPUT 33W

VM - VIRTUAL MIDNIGHT (Lumen package 15L - 13L)													
Setting Code	W Max	Nominal flux (lm)			W Med	Nominal flux (lm)			W Min	Nominal flux (lm)			Description
		2700K	3000K	4000K		2700K	3000K	4000K		2700K	3000K	4000K	
LUMEN PACKAGE 15L													
VMA110A0-0013	106	13522	15312	17000	69	9831	11132	12359	52	7667	8682	9639	VM ON-106W / 21:00-69W / 00:00-52W / 04:00-69W / 06:00-106W
VMA110A0-0014	69	9831	11132	12359	46	6964	7886	8755	35	5287	5987	6647	VM ON-69W / 21:00-46W / 00:00-35W / 04:00-46 / 06:00-69W
VMA110A0-0015	52	7667	8682	9639	35	5287	5987	6647	27	4084	4624	5134	VM ON-52W / 21:00-35W / 00:00-27W / 04:00-35W / 06:00-52W
VMA110A0-0001	106	13522	15312	17000					52	7667	8682	9639	VM ON-106W / 22:00-52W / 06:00-106W
VMA110A0-0002	106	13522	15312	17000					69	9831	11132	12359	VM ON-106W / 22:00-69W / 06:00-106W
VMA110A0-0003	69	9831	11132	12359					35	5287	5987	6647	VM ON-69W / 22:00-35W / 06:00-69W
VMA110A0-0004	69	9831	11132	12359					46	6964	7886	8755	VM ON-69W / 22:00-46W / 06:00-69W
VMA110A0-0005	52	7667	8682	9639					27	4084	4624	5134	VM ON-52W / 22:00-27W / 06:00-52W
VMA110A0-0006	52	7667	8682	9639					35	5287	5987	6647	VM ON-52W / 22:00-35W / 06:00-52W
VMA110A0-0007	106	13522	15312	17000					52	7667	8682	9639	VM ON-106W / 00:00-52W / 06:00-106W
VMA110A0-0008	106	13522	15312	17000					69	9831	11132	12359	VM ON-106W / 00:00-69W / 06:00-106W
VMA110A0-0009	69	9831	11132	12359					35	5287	5987	6647	VM ON-69W / 00:00-35W / 06:00-69W
VMA110A0-0010	69	9831	11132	12359					46	6964	7886	8755	VM ON-69W / 00:00-46W / 06:00-69W
VMA110A0-0011	52	7667	8682	9639					27	4084	4624	5134	VM ON-52W / 00:00-27W / 06:00-52W
VMA110A0-0012	52	7667	8682	9639					35	5287	5987	6647	VM ON-52W / 00:00-35W / 06:00-52W
LUMEN PACKAGE 13L													
VMA11MA0-0013	95	11832	13398	14875	62	8602	9740	10814	46	6709	7597	8434	VM ON-95W / 21:00-62W / 00:00-46W / 04:00-62W / 06:00-95W
VMA11MA0-0014	62	8602	9740	10814	42	6093	6900	7661	31	4626	5239	5816	VM ON-62W / 21:00-42W / 00:00-31 / 04:00-42W / 06:00-62W
VMA11MA0-0015	46	6709	7597	8434	31	4626	5239	5816	24	3573	4046	4492	VM ON-46W / 21:00-31W / 00:00-24W / 04:00-31W / 06:00-46W
VMA11MA0-0001	95	11832	13398	14875					46	6709	7597	8434	VM ON-95W / 22:00-46W / 06:00-95W
VMA11MA0-0002	95	11832	13398	14875					62	8602	9740	10814	VM ON-95W / 22:00-62W / 06:00-95W
VMA11MA0-0003	62	8602	9740	10814					31	4626	5239	5816	VM ON-62W / 22:00-31W / 06:00-62W
VMA11MA0-0004	62	8602	9740	10814					42	6093	6900	7661	VM ON-62W / 22:00-42W / 06:00-62W
VMA11MA0-0005	46	6709	7597	8434					24	3573	4046	4492	VM ON-46W / 22:00-24W / 06:00-46W
VMA11MA0-0006	46	6709	7597	8434					31	4626	5239	5816	VM ON-46W / 22:00-31W / 06:00-46W
VMA11MA0-0007	95	11832	13398	14875					46	6709	7597	8434	VM ON-95W / 00:00-46W / 06:00-95W
VMA11MA0-0008	95	11832	13398	14875					62	8602	9740	10814	VM ON-95W / 00:00-62W / 06:00-95W
VMA11MA0-0009	62	8602	9740	10814					31	4626	5239	5816	VM ON-62W / 00:00-31W / 06:00-62W
VMA11MA0-0010	62	8602	9740	10814					42	6093	6900	7661	VM ON-62W / 00:00-42W / 06:00-62W
VMA11MA0-0011	46	6709	7597	8434					24	3573	4046	4492	VM ON-46W / 00:00-24W / 06:00-46W
VMA11MA0-0012	46	6709	7597	8434					31	4626	5239	5816	VM ON-46W / 00:00-31W / 06:00-46W

Control options - Variant S - N(Optics K07 - K10 - K12 - 075 - 100 - 125 - 200 - AFN - ARS)

Other Setting Options are available. For more information, contact Cree Lighting Europe.

VM - VIRTUAL MIDNIGHT(Lumen package 9L - 11L)													
Setting Code	W Max	Nominal flux (lm)			W Med	Nominal flux (lm)			W Min	Nominal flux (lm)			Description
		2700K	3000K	4000K		2700K	3000K	4000K		2700K	3000K	4000K	
LUMEN PACKAGE 11L													
VMA11KA0-0013	81	10142	11484	12750	53	7373	8349	9269	40	5750	6511	7229	VM ON-81W / 21:00-53W / 00:00-40W / 04:00-53W/06:00-81W
VMA11KA0-0014	53	7373	8349	9269	35	5223	5914	6566	27	3965	4490	4985	VM ON-53W / 21:00-35W / 00:00-27W / 04:00-35W/06:00-53W
VMA11KA0-0015	40	5750	6511	7229	27	3965	4490	4985	21	3063	3468	3851	VM ON-40W / 21:00-27W / 00:00-21W / 04:00-27W/06:00-40W
VMA11KA0-0001	81	10142	11484	12750					40	5750	6511	7229	VM ON-81W / 22:00-40W / 06:00-81W
VMA11KA0-0002	81	10142	11484	12750					53	7373	8349	9269	VM ON-81W / 22:00-53W / 06:00-81W
VMA11KA0-0003	53	7373	8349	9269					27	3965	4490	4985	VM ON-53W / 22:00-27W / 06:00-53W
VMA11KA0-0004	53	7373	8349	9269					35	5223	5914	6566	VM ON-53W / 22:00-35W / 06:00-53W
VMA11KA0-0005	40	5750	6511	7229					21	3063	3468	3851	VM ON-40W / 22:00-21W / 06:00-40W
VMA11KA0-0006	40	5750	6511	7229					27	3965	4490	4985	VM ON-40W / 22:00-27W / 06:00-40W
VMA11KA0-0007	81	10142	11484	12750					40	5750	6511	7229	VM ON-81W / 00:00-40W / 06:00-81W
VMA11KA0-0008	81	10142	11484	12750					53	7373	8349	9269	VM ON-81W / 00:00-53W / 06:00-81W
VMA11KA0-0009	53	7373	8349	9269					27	3965	4490	4985	VM ON-53W / 00:00-27W / 06:00-53W
VMA11KA0-0010	53	7373	8349	9269					35	5223	5914	6566	VM ON-53W / 00:00-35W / 06:00-53W
VMA11KA0-0011	40	5750	6511	7229					21	3063	3468	3851	VM ON-40W / 00:00-21W / 06:00-40W
VMA11KA0-0012	40	5750	6511	7229					27	3965	4490	4985	VM ON-40W / 00:00-27W / 06:00-40W
LUMEN PACKAGE 9L													
VMA11IA0-0013	67	8451	9570	10625	44	6144	6957	7724	33	4792	5426	6024	VM ON-67W / 21:00-44W / 00:00-33W / 04:00-44W/06:00-67W
VMA11IA0-0014	44	6144	6957	7724	29	4352	4928	5472	22	3304	3742	4154	VM ON-44W / 21:00-29W / 00:00-22W / 04:00-29W/06:00-44W
VMA11IA0-0015	33	4792	5426	6024	22	3304	3742	4154	17	2552	2890	3209	VM ON-33W / 21:00-22W / 00:00-17W / 04:00-22W/06:00-33W
VMA11IA0-0001	67	8451	9570	10625					33	4792	5426	6024	VM ON-67W / 22:00-33W / 06:00-67W
VMA11IA0-0002	67	8451	9570	10625					44	6144	6957	7724	VM ON-67W / 22:00-44W / 06:00-67W
VMA11IA0-0003	44	6144	6957	7724					22	3304	3742	4154	VM ON-44W / 22:00-22W / 06:00-44W
VMA11IA0-0004	44	6144	6957	7724					29	4352	4928	5472	VM ON-44W / 22:00-29W / 06:00-44W
VMA11IA0-0005	33	4792	5426	6024					17	2552	2890	3209	VM ON-33W / 22:00-17W / 06:00-33W
VMA11IA0-0006	33	4792	5426	6024					22	3304	3742	4154	VM ON-33W / 22:00-22W / 06:00-33W
VMA11IA0-0007	67	8451	9570	10625					33	4792	5426	6024	VM ON-67W / 00:00-33W / 06:00-67W
VMA11IA0-0008	67	8451	9570	10625					44	6144	6957	7724	VM ON-67W / 00:00-44W / 06:00-67W
VMA11IA0-0009	44	6144	6957	7724					22	3304	3742	4154	VM ON-44W / 00:00-22W / 06:00-44W
VMA11IA0-0010	44	6144	6957	7724					29	4352	4928	5472	VM ON-44W / 00:00-29W / 06:00-44W
VMA11IA0-0011	33	4792	5426	6024					17	2552	2890	3209	VM ON-33W / 00:00-17W / 06:00-33W
VMA11IA0-0012	33	4792	5426	6024					22	3304	3742	4154	VM ON-33W / 00:00-22W / 06:00-33W

Energy DUE

LED Street/Area Luminaire



CREE LIGHTING

Control options - Variant S - N (Optics K07 - K10 - K12 - 075 - 100 - 125 - 200 - AFN - ARS)

Other Setting Options are available. For more information, contact Cree Lighting Europe.

DL (DALI DIMMABLE)						
Lumen Package	Setting Code	System Watts W	Nominal flux (lm)			Description
			2700K	3000K	4000K	
15L	DLE110A0-0001	106	13522	15312	17000	DALI MAX 106W
13L	DLE11MA0-0001	95	11832	13398	14875	DALI MAX 95W
11L	DLE11KA0-0001	81	10142	11484	12750	DALI MAX 81W
9L	DLE11IA0-0001	67	8451	9570	10625	DALI MAX 67W

CL*	
Setting Code	Description
CL###-****	CLO 50.000 HOURS START AT 90%
CL###-****	CLO 100.000 HOURS START AT 80%

*Standard CLO to be matched to programme powers for FX option for S-N variants, please for information contact Cree Lighting Europe.

VMC*	
Setting Code	Description
VMC###-****	CLO 50.000 HOURS START AT 90%
VMC###-****	CLO 100.000 HOURS START AT 80%

*Standard CLO to be matched to the wattage of the VM option programmes for S-N variants, please for information contact Cree Lighting Europe.

Control options - Variant Z (Optics K07 - K10 - K12 - 075 - 100 - 125 - 200 - AFN - ARS)

Other Setting Options are available. For more information, contact Cree Lighting Europe.

FX - FIXED OUTPUT					
Setting Code	System Watts W	Nominal flux (lm)			Description
		2700K	3000K	4000K	
LUMEN PACKAGE 15L					
FXP110A0-0001	106	13522	15312	17000	FIXED OUTPUT 54W SR
FXP110A0-0002	69	9831	11132	12359	FIXED OUTPUT 36W SR
FXP110A0-0003	52	7667	8682	9639	FIXED OUTPUT 27W SR
LUMEN PACKAGE 13L					
FXP11MA0-0001	95	11832	13398	14875	FIXED OUTPUT 67W SR
FXP11MA0-0002	62	8602	9740	10814	FIXED OUTPUT 44W SR
FXP11MA0-0003	46	6709	7597	8434	FIXED OUTPUT 33W SR
LUMEN PACKAGE 11L					
FXP11KA0-0001	81	10142	11484	12750	FIXED OUTPUT 81W SR
FXP11KA0-0002	53	7373	8349	9269	FIXED OUTPUT 53W SR
FXP11KA0-0003	40	5750	6511	7229	FIXED OUTPUT 40W SR
LUMEN PACKAGE 9L					
FXP11IA0-0001	67	8451	9570	10625	FIXED OUTPUT 67W SR
FXP11IA0-0002	44	6144	6957	7724	FIXED OUTPUT 44W SR
FXP11IA0-0003	33	4792	5426	6024	FIXED OUTPUT 33W SR

VM - VIRTUAL MIDNIGHT (Lumen package 15L - 13L)													
Setting Code	W Max	Nominal flux (lm)			W Med	Nominal flux (lm)			W Min	Nominal flux (lm)			Description
		2700K	3000K	4000K		2700K	3000K	4000K		2700K	3000K	4000K	
LUMEN PACKAGE 15L													
VMP110A0-0013	106	13522	15312	17000	69	9831	11132	12359	52	7667	8682	9639	VM ON-106W / 21:00-69W / 00:00-52W/04:00-69W/06:00-106W
VMP110A0-0014	69	9831	11132	12359	46	6964	7886	8755	35	5287	5987	6647	VM ON-69W / 21:00-46W / 00:00-35W / 04:00-46W/06:00-69W
VMP110A0-0015	52	7667	8682	9639	35	5287	5987	6647	27	4084	4624	5134	VM ON-52W / 21:00-35W / 00:00-27W / 04:00-35W/06:00-52W
VMP110A0-0001	106	13522	15312	17000					52	7667	8682	9639	VM ON-106W / 22:00-52W / 06:00-106W
VMP110A0-0002	106	13522	15312	17000					69	9831	11132	12359	VM ON-106W / 22:00-69W / 06:00-106W
VMP110A0-0003	69	9831	11132	12359					35	5287	5987	6647	VM ON-69W / 22:00-35W / 06:00-69W
VMP110A0-0004	69	9831	11132	12359					46	6964	7886	8755	VM ON-69W / 22:00-46W / 06:00-69W
VMP110A0-0005	52	7667	8682	9639					27	4084	4624	5134	VM ON-52W / 22:00-27W / 06:00-52W
VMP110A0-0006	52	7667	8682	9639					35	5287	5987	6647	VM ON-52W / 22:00-35W / 06:00-52W
VMP110A0-0007	106	13522	15312	17000					52	7667	8682	9639	VM ON-106W / 00:00-52W / 06:00-106W
VMP110A0-0008	106	13522	15312	17000					69	9831	11132	12359	VM ON-106W / 00:00-69W / 06:00-106W
VMP110A0-0009	69	9831	11132	12359					35	5287	5987	6647	VM ON-69W / 00:00-35W / 06:00-69W
VMP110A0-0010	69	9831	11132	12359					46	6964	7886	8755	VM ON-69W / 00:00-46W / 06:00-69W
VMP110A0-0011	52	7667	8682	9639					27	4084	4624	5134	VM ON-52W / 00:00-27W / 06:00-52W
VMP110A0-0012	52	7667	8682	9639					35	5287	5987	6647	VM ON-52W / 00:00-35W / 06:00-52W
LUMEN PACKAGE 13L													
VMP11MA0-0013	95	11832	13398	14875	62	8602	9740	10814	46	6709	7597	8434	VM ON-95W / 21:00-62W / 00:00-46W / 04:00-62W/06:00-95W
VMP11MA0-0014	62	8602	9740	10814	42	6093	6900	7661	31	4626	5239	5816	VM ON-62W / 21:00-42W / 00:00-31W / 04:00-42W/06:00-62W
VMP11MA0-0015	46	6709	7597	8434	31	4626	5239	5816	24	3573	4046	4492	VM ON-46W / 21:00-31W / 00:00-24W / 04:00-31W/06:00-46W
VMP11MA0-0001	95	11832	13398	14875					46	6709	7597	8434	VM ON-95W / 22:00-46W / 06:00-95W
VMP11MA0-0002	95	11832	13398	14875					62	8602	9740	10814	VM ON-95W / 22:00-62W / 06:00-95W
VMP11MA0-0003	62	8602	9740	10814					31	4626	5239	5816	VM ON-62W / 22:00-31W / 06:00-62W
VMP11MA0-0004	62	8602	9740	10814					42	6093	6900	7661	VM ON-62W / 22:00-42W / 06:00-62W
VMP11MA0-0005	46	6709	7597	8434					24	3573	4046	4492	VM ON-46W / 22:00-24W / 06:00-46W
VMP11MA0-0006	46	6709	7597	8434					31	4626	5239	5816	VM ON-46W / 22:00-31W / 06:00-46W
VMP11MA0-0007	95	11832	13398	14875					46	6709	7597	8434	VM ON-95W / 00:00-46W / 06:00-95W
VMP11MA0-0008	95	11832	13398	14875					62	8602	9740	10814	VM ON-95W / 00:00-62W / 06:00-95W
VMP11MA0-0009	62	8602	9740	10814					31	4626	5239	5816	VM ON-62W / 00:00-31W / 06:00-62W
VMP11MA0-0010	62	8602	9740	10814					42	6093	6900	7661	VM ON-62W / 00:00-42W / 06:00-62W
VMP11MA0-0011	46	6709	7597	8434					24	3573	4046	4492	VM ON-46W / 00:00-24W / 06:00-46W
VMP11MA0-0012	46	6709	7597	8434					31	4626	5239	5816	VM ON-46W / 00:00-31W / 06:00-46W

Control options - Variant Z (Optics K07 - K10 - K12 - 075 - 100 - 125 - 200 - AFN - ARS)

Other Setting Options are available. For more information, contact Cree Lighting Europe.

VM - VIRTUAL MIDNIGHT(Lumen package 11L - 9L)													
Setting Code	W Max	Nominal flux (lm)			W Med	Nominal flux (lm)			W Min	Nominal flux (lm)			Description
		2700K	3000K	4000K		2700K	3000K	4000K		2700K	3000K	4000K	
LUMEN PACKAGE 11L													
VMP11KA0-0013	81	10142	11484	12750	53	7373	8349	9269	40	5750	6511	7229	VM ON-81W / 21:00-53W / 00:00-40W / 04:00-53W/06:00-81W
VMP11KA0-0014	53	7373	8349	9269	35	5223	5914	6566	27	3965	4490	4985	VM ON-53W / 21:00-35W / 00:00-27W / 04:00-35W/06:00-53W
VMP11KA0-0015	40	5750	6511	7229	27	3965	4490	4985	21	3063	3468	3851	VM ON-40W / 21:00-27W / 00:00-21W / 04:00-27W/06:00-40W
VMP11KA0-0001	81	10142	11484	12750					40	5750	6511	7229	VM ON-81W / 22:00-40W / 06:00-81W
VMP11KA0-0002	81	10142	11484	12750					53	7373	8349	9269	VM ON-81W / 22:00-53W / 06:00-81W
VMP11KA0-0003	53	7373	8349	9269					27	3965	4490	4985	VM ON-53W / 22:00-27W / 06:00-53W
VMP11KA0-0004	53	7373	8349	9269					35	5223	5914	6566	VM ON-53W / 22:00-35W / 06:00-53W
VMP11KA0-0005	40	5750	6511	7229					21	3063	3468	3851	VM ON-40W / 22:00-21W / 06:00-40W
VMP11KA0-0006	40	5750	6511	7229					27	3965	4490	4985	VM ON-40W / 22:00-27W / 06:00-40W
VMP11KA0-0007	81	10142	11484	12750					40	5750	6511	7229	VM ON-81W / 00:00-40W / 06:00-81W
VMP11KA0-0008	81	10142	11484	12750					53	7373	8349	9269	VM ON-81W / 00:00-53W / 06:00-81W
VMP11KA0-0009	53	7373	8349	9269					27	3965	4490	4985	VM ON-53W / 00:00-27W / 06:00-53W
VMP11KA0-0010	53	7373	8349	9269					35	5223	5914	6566	VM ON-53W / 00:00-35W / 06:00-53W
VMP11KA0-0011	40	5750	6511	7229					21	3063	3468	3851	VM ON-40W / 00:00-21W / 06:00-40W
VMP11KA0-0012	40	5750	6511	7229					27	3965	4490	4985	VM ON-40W / 00:00-27W / 06:00-40W
LUMEN PACKAGE 9L													
VMP11IA0-0013	67	8451	9570	10625	44	6144	6957	7724	33	4792	5426	6024	VM ON-67W / 21:00-44W / 00:00-33W / 04:00-44W/06:00-67W
VMP11IA0-0014	44	6144	6957	7724	29	4352	4928	5472	22	3304	3742	4154	VM ON-44W / 21:00-29W / 00:00-22W / 04:00-29W/06:00-44W
VMP11IA0-0015	33	4792	5426	6024	22	3304	3742	4154	17	2552	2890	3209	VM ON-33W / 21:00-22W / 00:00-17W / 04:00-22W/06:00-33W
VMP11IA0-0001	67	8451	9570	10625					33	4792	5426	6024	VM ON-67W / 22:00-33W / 06:00-67W
VMP11IA0-0002	67	8451	9570	10625					44	6144	6957	7724	VM ON-67W / 22:00-44W / 06:00-67W
VMP11IA0-0003	44	6144	6957	7724					22	3304	3742	4154	VM ON-44W / 22:00-22W / 06:00-44W
VMP11IA0-0004	44	6144	6957	7724					29	4352	4928	5472	VM ON-44W / 22:00-29W / 06:00-44W
VMP11IA0-0005	33	4792	5426	6024					17	2552	2890	3209	VM ON-33W / 22:00-17W / 06:00-33W
VMP11IA0-0006	33	4792	5426	6024					22	3304	3742	4154	VM ON-33W / 22:00-22W / 06:00-33W
VMP11IA0-0007	67	8451	9570	10625					33	4792	5426	6024	VM ON-67W / 00:00-33W / 06:00-67W
VMP11IA0-0008	67	8451	9570	10625					44	6144	6957	7724	VM ON-67W / 00:00-44W / 06:00-67W
VMP11IA0-0009	44	6144	6957	7724					22	3304	3742	4154	VM ON-44W / 00:00-22W / 06:00-44W
VMP11IA0-0010	44	6144	6957	7724					29	4352	4928	5472	VM ON-44W / 00:00-29W / 06:00-44W
VMP11IA0-0011	33	4792	5426	6024					17	2552	2890	3209	VM ON-33W / 00:00-17W / 06:00-33W
VMP11IA0-0012	33	4792	5426	6024					22	3304	3742	4154	VM ON-33W / 00:00-22W / 06:00-33W

CL*	
Setting Code	Description
CL####-****	CLO 50.000 HOURS START AT 90%
CL####-****	CLO 100.000 HOURS START AT 80%

*Standard CLO to be matched to programme powers for FX option for S-N variants, please for information contact Cree Lighting Europe.

VMC*	
Setting Code	Description
VMC####-****	CLO 50.000 HOURS START AT 90%
VMC####-****	CLO 100.000 HOURS START AT 80%

*Standard CLO to be matched to the wattage of the VM option programmes for S-N variants, please for information contact Cree Lighting Europe.

Control options - Variant S - N(Optics 150 - SCP - PCL - PCR))

Other Setting Options are available. For more information, contact Cree Lighting Europe.

FX - FIXED OUTPUT					
Setting Code	System Watts W	Nominal flux (lm)			Description
		2700K	3000K	4000K	
LUMEN PACKAGE 15L					
FXA110A0-0001	106	14396	14707	17310	FIXED OUTPUT 106W
FXA110A0-0002	69	10466	10692	12584	FIXED OUTPUT 69W
FXA110A0-0003	52	8163	8339	9815	FIXED OUTPUT 52W
LUMEN PACKAGE 13L					
FXA11MA0-0001	95	12597	12868	15146	FIXED OUTPUT 95W
FXA11MA0-0002	62	9158	9355	11011	FIXED OUTPUT 62W
FXA11MA0-0003	46	7142	7296	8588	FIXED OUTPUT 46W
LUMEN PACKAGE 11L					
FXA11KA0-0001	81	10797	11030	12983	FIXED OUTPUT 81W
FXA11KA0-0002	53	7850	8019	9438	FIXED OUTPUT 53W
FXA11KA0-0003	40	6122	6254	7361	FIXED OUTPUT 40W
LUMEN PACKAGE 9L					
FXA11IA0-0001	67	8998	9192	10819	FIXED OUTPUT 67W
FXA11IA0-0002	44	6541	6682	7865	FIXED OUTPUT 44W
FXA11IA0-0003	33	5102	5212	6134	FIXED OUTPUT 33W

VM - VIRTUAL MIDNIGHT (Lumen package 15L - 13L)													
Setting Code	W Max	Nominal flux (lm)			W Med	Nominal flux (lm)			W Min	Nominal flux (lm)			Description
		2700K	3000K	4000K		2700K	3000K	4000K		2700K	3000K	4000K	
LUMEN PACKAGE 15L													
VMA110A0-0013	106	14396	14707	17310	69	10466	10692	12584	52	8163	8339	9815	VM ON-106W/21:00-69W/ 00:00-52W / 04:00-69W/06:00-106W
VMA110A0-0014	69	10466	10692	12584	46	7414	7574	8915	35	5629	5750	6768	VM ON-69W/21:00-46W / 00:00-35W / 04:00-46W / 06:00-69W
VMA110A0-0015	52	8163	8339	9815	35	5629	5750	6768	27	4348	4441	5228	VM ON-52W/21:00-35W / 00:00-27W / 04:00-35W / 06:00-52W
VMA110A0-0001	106	14396	14707	17310					52	8163	8339	9815	VM ON-106W / 22:00-52W / 06:00-106W
VMA110A0-0002	106	14396	14707	17310					69	10466	10692	12584	VM ON-106W / 22:00-69W / 06:00-106W
VMA110A0-0003	69	10466	10692	12584					35	5629	5750	6768	VM ON-69W / 22:00-35W / 06:00-69W
VMA110A0-0004	69	10466	10692	12584					46	7414	7574	8915	VM ON-69W / 22:00-46W / 06:00-69W
VMA110A0-0005	52	8163	8339	9815					27	4348	4441	5228	VM ON-52W / 22:00-27W / 06:00-52W
VMA110A0-0006	52	8163	8339	9815					35	5629	5750	6768	VM ON-52W / 22:00-35W / 06:00-52W
VMA110A0-0007	106	14396	14707	17310					52	8163	8339	9815	VM ON-106W / 00:00-52W / 06:00-106W
VMA110A0-0008	106	14396	14707	17310					69	10466	10692	12584	VM ON-106W / 00:00-69W / 06:00-106W
VMA110A0-0009	69	10466	10692	12584					35	5629	5750	6768	VM ON-69W / 00:00-35W / 06:00-69W
VMA110A0-0010	69	10466	10692	12584					46	7414	7574	8915	VM ON-69W / 00:00-46W / 06:00-69W
VMA110A0-0011	52	8163	8339	9815					27	4348	4441	5228	VM ON-52W / 00:00-27W / 06:00-52W
VMA110A0-0012	52	8163	8339	9815					35	5629	5750	6768	VM ON-52W / 00:00-35W / 06:00-52W
LUMEN PACKAGE 13L													
VMA11MA0-0013	95	12597	12868	15146	62	9158	9355	11011	46	7142	7296	8588	VM ON-95W / 21:00-62W / 00:00-46W / 04:00-62W/06:00-95W
VMA11MA0-0014	62	9158	9355	11011	42	6487	6627	7800	31	4925	5032	5922	VM ON-62W / 21:00-42W / 00:00-31W / 04:00-42W/06:00-62W
VMA11MA0-0015	46	7142	7296	8588	31	4925	5032	5922	24	3804	3886	4574	VM ON-46W / 21:00-31W / 00:00-24W / 04:00-31W/06:00-46W
VMA11MA0-0001	95	12597	12868	15146					46	7142	7296	8588	VM ON-95W / 22:00-46W / 06:00-95W
VMA11MA0-0002	95	12597	12868	15146					62	9158	9355	11011	VM ON-95W / 22:00-62W / 06:00-95W
VMA11MA0-0003	62	9158	9355	11011					31	4925	5032	5922	VM ON-62W / 22:00-31W / 06:00-62W
VMA11MA0-0004	62	9158	9355	11011					42	6487	6627	7800	VM ON-62W / 22:00-42W / 06:00-62W
VMA11MA0-0005	46	7142	7296	8588					24	3804	3886	4574	VM ON-46W / 22:00-24W / 06:00-46W
VMA11MA0-0006	46	7142	7296	8588					31	4925	5032	5922	VM ON-46W / 22:00-31W / 06:00-46W
VMA11MA0-0007	95	12597	12868	15146					46	7142	7296	8588	VM ON-95W / 00:00-46W / 06:00-95W
VMA11MA0-0008	95	12597	12868	15146					62	9158	9355	11011	VM ON-95W / 00:00-62W / 06:00-95W
VMA11MA0-0009	62	9158	9355	11011					31	4925	5032	5922	VM ON-62W / 00:00-31W / 06:00-62W
VMA11MA0-0010	62	9158	9355	11011					42	6487	6627	7800	VM ON-62W / 00:00-42W / 06:00-62W
VMA11MA0-0011	46	7142	7296	8588					24	3804	3886	4574	VM ON-46W / 00:00-24W / 06:00-46W
VMA11MA0-0012	46	7142	7296	8588					31	4925	5032	5922	VM ON-46W / 00:00-31W / 06:00-46W

Control options - Variant S - N (Optics 150 - SCP - PCL - PCR)

Other Setting Options are available. For more information, contact Cree Lighting Europe.

VM - VIRTUAL MIDNIGHT(Lumen package 11L - 9L)													
Setting Code	W Max	Nominal flux (lm)			W Med	Nominal flux (lm)			W Min	Nominal flux (lm)			Description
		2700K	3000K	4000K		2700K	3000K	4000K		2700K	3000K	4000K	
LUMEN PACKAGE 11L													
VMA11KA0-0013	81	10797	11030	12983	53	7850	8019	9438	40	6122	6254	7361	VM ON-81W / 21:00-53W / 00:00-40W / 04:00-53W/06:00-81W
VMA11KA0-0014	53	7850	8019	9438	35	5561	5681	6686	27	4222	4313	5076	VM ON-53W / 21:00-35W / 00:00-27W / 04:00-35W/06:00-53W
VMA11KA0-0015	40	6122	6254	7361	27	4222	4313	5076	21	3261	3331	3921	VM ON-40W / 21:00-27W / 00:00-21W / 04:00-27W/06:00-40W
VMA11KA0-0001	81	10797	11030	12983					40	6122	6254	7361	VM ON-81W / 22:00-40W / 06:00-81W
VMA11KA0-0002	81	10797	11030	12983					53	7850	8019	9438	VM ON-81W / 22:00-53W / 06:00-81W
VMA11KA0-0003	53	7850	8019	9438					27	4222	4313	5076	VM ON-53W / 22:00-27W / 06:00-53W
VMA11KA0-0004	53	7850	8019	9438					35	5561	5681	6686	VM ON-53W / 22:00-35W / 06:00-53W
VMA11KA0-0005	40	6122	6254	7361					21	3261	3331	3921	VM ON-40W / 22:00-21W / 06:00-40W
VMA11KA0-0006	40	6122	6254	7361					27	4222	4313	5076	VM ON-40W / 22:00-27W / 06:00-40W
VMA11KA0-0007	81	10797	11030	12983					40	6122	6254	7361	VM ON-81W / 00:00-40W / 06:00-81W
VMA11KA0-0008	81	10797	11030	12983					53	7850	8019	9438	VM ON-81W / 00:00-53W / 06:00-81W
VMA11KA0-0009	53	7850	8019	9438					27	4222	4313	5076	VM ON-53W / 00:00-27W / 06:00-53W
VMA11KA0-0010	53	7850	8019	9438					35	5561	5681	6686	VM ON-53W / 00:00-35W / 06:00-53W
VMA11KA0-0011	40	6122	6254	7361					21	3261	3331	3921	VM ON-40W / 00:00-21W / 06:00-40W
VMA11KA0-0012	40	6122	6254	7361					27	4222	4313	5076	VM ON-40W / 00:00-27W / 06:00-40W
LUMEN PACKAGE 9L													
VMA11IA0-0013	67	8998	9192	10819	44	6541	6682	7865	33	5102	5212	6134	VM ON-67W / 21:00-44W / 00:00-33W / 04:00-44W/06:00-67W
VMA11IA0-0014	44	6541	6682	7865	29	4634	4734	5572	22	3518	3594	4230	VM ON-44W / 21:00-29W / 00:00-22W / 04:00-29W/06:00-44W
VMA11IA0-0015	33	5102	5212	6134	22	3518	3594	4230	17	2717	2776	3267	VM ON-33W / 21:00-22W / 00:00-17W / 04:00-22W/06:00-33W
VMA11IA0-0001	67	8998	9192	10819					33	5102	5212	6134	VM ON-67W / 22:00-33W / 06:00-67W
VMA11IA0-0002	67	8998	9192	10819					44	6541	6682	7865	VM ON-67W / 22:00-44W / 06:00-67W
VMA11IA0-0003	44	6541	6682	7865					22	3518	3594	4230	VM ON-44W / 22:00-22W / 06:00-44W
VMA11IA0-0004	44	6541	6682	7865					29	4634	4734	5572	VM ON-44W / 22:00-29W / 06:00-44W
VMA11IA0-0005	33	5102	5212	6134					17	2717	2776	3267	VM ON-33W / 22:00-17W / 06:00-33W
VMA11IA0-0006	33	5102	5212	6134					22	3518	3594	4230	VM ON-33W / 22:00-22W / 06:00-33W
VMA11IA0-0007	67	8998	9192	10819					33	5102	5212	6134	VM ON-67W / 00:00-33W / 06:00-67W
VMA11IA0-0008	67	8998	9192	10819					44	6541	6682	7865	VM ON-67W / 00:00-44W / 06:00-67W
VMA11IA0-0009	44	6541	6682	7865					22	3518	3594	4230	VM ON-44W / 00:00-22W / 06:00-44W
VMA11IA0-0010	44	6541	6682	7865					29	4634	4734	5572	VM ON-44W / 00:00-29W / 06:00-44W
VMA11IA0-0011	33	5102	5212	6134					17	2717	2776	3267	VM ON-33W / 00:00-17W / 06:00-33W
VMA11IA0-0012	33	5102	5212	6134					22	3518	3594	4230	VM ON-33W / 00:00-22W / 06:00-33W

DL (DALI DIMMABLE)						
Lumen Package	Setting Code	System Watts W	Nominal flux (lm)			Description
			2700K	3000K	4000K	
15L	DLE110A0-0001	106	14396	14707	17310	DALI MAX 106W
13L	DLE11MA0-0001	95	12597	12868	15146	DALI MAX 95W
11L	DLE11KA0-0001	81	10797	11030	12983	DALI MAX 81W
9L	DLE11IA0-0001	67	8998	9192	10819	DALI MAX 67W

Control options - Variant Z (Optics 150 - SCP - PCL - PCR)

Other Setting Options are available. For more information, contact Cree Lighting Europe.

FX - FIXED OUTPUT					
Setting Code	System Watts W	Nominal flux (lm)			Description
		2700K	3000K	4000K	
LUMEN PACKAGE 15L					
FXP110A0-0001	106	14396	14707	17310	FIXED OUTPUT 54W SR
FXP110A0-0002	69	10466	10692	12584	FIXED OUTPUT 36W SR
FXP110A0-0003	52	8163	8339	9815	FIXED OUTPUT 27W SR
LUMEN PACKAGE 13L					
FXP11MA0-0001	95	12597	12868	15146	FIXED OUTPUT 67W SR
FXP11MA0-0002	62	9158	9355	11011	FIXED OUTPUT 44W SR
FXP11MA0-0003	46	7142	7296	8588	FIXED OUTPUT 33W SR
LUMEN PACKAGE 11L					
FXP11KA0-0001	81	10797	11030	12983	FIXED OUTPUT 81W SR
FXP11KA0-0002	53	7850	8019	9438	FIXED OUTPUT 53W SR
FXP11KA0-0003	40	6122	6254	7361	FIXED OUTPUT 40W SR
LUMEN PACKAGE 9L					
FXP11IA0-0001	67	8998	9192	10819	FIXED OUTPUT 67W SR
FXP11IA0-0002	44	6541	6682	7865	FIXED OUTPUT 44W SR
FXP11IA0-0003	33	5102	5212	6134	FIXED OUTPUT 33W SR

VM - VIRTUAL MIDNIGHT (Lumen package 15L - 13L)													
Setting Code	W Max	Nominal flux (lm)			W Med	Nominal flux (lm)			W Min	Nominal flux (lm)			Description
		2700K	3000K	4000K		2700K	3000K	4000K		2700K	3000K	4000K	
LUMEN PACKAGE 15L													
VMP110A0-0013	106	14396	14707	17310	69	10466	10692	12584	52	8163	8339	9815	VM ON-106W / 21:00-69W / 00:00-52W / 04:00-69W / 06:00-106W
VMP110A0-0014	69	10466	10692	12584	46	7414	7574	8915	35	5629	5750	6768	VM ON-69W / 21:00-46W / 00:00-35W / 04:00-46W / 06:00-69W
VMP110A0-0015	52	8163	8339	9815	35	5629	5750	6768	27	4348	4441	5228	VM ON-52W / 21:00-35W / 00:00-27W / 04:00-35W / 06:00-52W
VMP110A0-0001	106	14396	14707	17310					52	8163	8339	9815	VM ON-106W / 22:00-52W / 06:00-106W
VMP110A0-0002	106	14396	14707	17310					69	10466	10692	12584	VM ON-106W / 22:00-69W / 06:00-106W
VMP110A0-0003	69	10466	10692	12584					35	5629	5750	6768	VM ON-69W / 22:00-35W / 06:00-69W
VMP110A0-0004	69	10466	10692	12584					46	7414	7574	8915	VM ON-69W / 22:00-46W / 06:00-69W
VMP110A0-0005	52	8163	8339	9815					27	4348	4441	5228	VM ON-52W / 22:00-27W / 06:00-52W
VMP110A0-0006	52	8163	8339	9815					35	5629	5750	6768	VM ON-52W / 22:00-35W / 06:00-52W
VMP110A0-0007	106	14396	14707	17310					52	8163	8339	9815	VM ON-106W / 00:00-52W / 06:00-106W
VMP110A0-0008	106	14396	14707	17310					69	10466	10692	12584	VM ON-106W / 00:00-69W / 06:00-106W
VMP110A0-0009	69	10466	10692	12584					35	5629	5750	6768	VM ON-69W / 00:00-35W / 06:00-69W
VMP110A0-0010	69	10466	10692	12584					46	7414	7574	8915	VM ON-69W / 00:00-46W / 06:00-69W
VMP110A0-0011	52	8163	8339	9815					27	4348	4441	5228	VM ON-52W / 00:00-27W / 06:00-52W
VMP110A0-0012	52	8163	8339	9815					35	5629	5750	6768	VM ON-52W / 00:00-35W / 06:00-52W
LUMEN PACKAGE 13L													
VMP11MA0-0013	95	12597	12868	15146	62	9158	9355	11011	46	7142	7296	8588	VM ON-95W / 21:00-62W / 00:00-46W / 04:00-62W / 06:00-95W
VMP11MA0-0014	62	9158	9355	11011	42	6487	6627	7800	31	4925	5032	5922	VM ON-62W / 21:00-42W / 00:00-31W / 04:00-42W / 06:00-62W
VMP11MA0-0015	46	7142	7296	8588	31	4925	5032	5922	24	3804	3886	4574	VM ON-46W / 21:00-31W / 00:00-24W / 04:00-31W / 06:00-46W
VMP11MA0-0001	95	12597	12868	15146					46	7142	7296	8588	VM ON-95W / 22:00-46W / 06:00-95W
VMP11MA0-0002	95	12597	12868	15146					62	9158	9355	11011	VM ON-95W / 22:00-62W / 06:00-95W
VMP11MA0-0003	62	9158	9355	11011					31	4925	5032	5922	VM ON-62W / 22:00-31W / 06:00-62W
VMP11MA0-0004	62	9158	9355	11011					42	6487	6627	7800	VM ON-62W / 22:00-42W / 06:00-62W
VMP11MA0-0005	46	7142	7296	8588					24	3804	3886	4574	VM ON-46W / 22:00-24W / 06:00-46W
VMP11MA0-0006	46	7142	7296	8588					31	4925	5032	5922	VM ON-46W / 22:00-31W / 06:00-46W
VMP11MA0-0007	95	12597	12868	15146					46	7142	7296	8588	VM ON-95W / 00:00-46W / 06:00-95W
VMP11MA0-0008	95	12597	12868	15146					62	9158	9355	11011	VM ON-95W / 00:00-62W / 06:00-95W
VMP11MA0-0009	62	9158	9355	11011					31	4925	5032	5922	VM ON-62W / 00:00-31W / 06:00-62W
VMP11MA0-0010	62	9158	9355	11011					42	6487	6627	7800	VM ON-62W / 00:00-42W / 06:00-62W
VMP11MA0-0011	46	7142	7296	8588					24	3804	3886	4574	VM ON-46W / 00:00-24W / 06:00-46W
VMP11MA0-0012	46	7142	7296	8588					31	4925	5032	5922	VM ON-46W / 00:00-31W / 06:00-46W

Energy DUE

LED Street/Area Luminaire



Control options - Variant Z (Optics 150 - SCP - PCL - PCR)

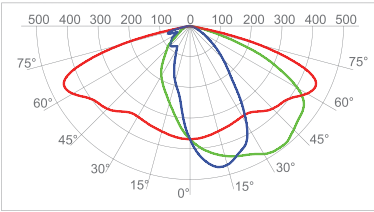
Other Setting Options are available. For more information, contact Cree Lighting Europe.

VM - VIRTUAL MIDNIGHT(Lumen package 11L - 9L)													
Setting Code	W Max	Nominal flux (lm)			W Med	Nominal flux (lm)			W Min	Nominal flux (lm)			Description
		2700K	3000K	4000K		2700K	3000K	4000K		2700K	3000K	4000K	
LUMEN PACKAGE 11L													
VMP11KA0-0013	81	10797	11030	12983	53	7850	8019	9438	40	6122	6254	7361	VM ON-81W / 21:00-53W / 00:00-40W / 04:00-53W/06:00-81W
VMP11KA0-0014	53	7850	8019	9438	35	5561	5681	6686	27	4222	4313	5076	VM ON-53W / 21:00-35W / 00:00-27W / 04:00-35W/06:00-53W
VMP11KA0-0015	40	6122	6254	7361	27	4222	4313	5076	21	3261	3331	3921	VM ON-40W / 21:00-27W / 00:00-21W / 04:00-27W/06:00-40W
VMP11KA0-0001	81	10797	11030	12983					40	6122	6254	7361	VM ON-81W / 22:00-40W / 06:00-81W
VMP11KA0-0002	81	10797	11030	12983					53	7850	8019	9438	VM ON-81W / 22:00-53W / 06:00-81W
VMP11KA0-0003	53	7850	8019	9438					27	4222	4313	5076	VM ON-53W / 22:00-27W / 06:00-53W
VMP11KA0-0004	53	7850	8019	9438					35	5561	5681	6686	VM ON-53W / 22:00-35W / 06:00-53W
VMP11KA0-0005	40	6122	6254	7361					21	3261	3331	3921	VM ON-40W / 22:00-21W / 06:00-40W
VMP11KA0-0006	40	6122	6254	7361					27	4222	4313	5076	VM ON-40W / 22:00-27W / 06:00-40W
VMP11KA0-0007	81	10797	11030	12983					40	6122	6254	7361	VM ON-81W / 00:00-40W / 06:00-81W
VMP11KA0-0008	81	10797	11030	12983					53	7850	8019	9438	VM ON-81W / 00:00-53W / 06:00-81W
VMP11KA0-0009	53	7850	8019	9438					27	4222	4313	5076	VM ON-53W / 00:00-27W / 06:00-53W
VMP11KA0-0010	53	7850	8019	9438					35	5561	5681	6686	VM ON-53W / 00:00-35W / 06:00-53W
VMP11KA0-0011	40	6122	6254	7361					21	3261	3331	3921	VM ON-40W / 00:00-21W / 06:00-40W
VMP11KA0-0012	40	6122	6254	7361					27	4222	4313	5076	VM ON-40W / 00:00-27W / 06:00-40W
LUMEN PACKAGE 9L													
VMP11IA0-0013	67	8998	9192	10819	44	6541	6682	7865	33	5102	5212	6134	VM ON-67W / 21:00-44W / 00:00-33W / 04:00-44W/06:00-67W
VMP11IA0-0014	44	6541	6682	7865	29	4634	4734	5572	22	3518	3594	4230	VM ON-44W / 21:00-29W / 00:00-22W / 04:00-29W/06:00-44W
VMP11IA0-0015	33	5102	5212	6134	22	3518	3594	4230	17	2717	2776	3267	VM ON-33W / 21:00-22W / 00:00-17W / 04:00-22W/06:00-33W
VMP11IA0-0001	67	8998	9192	10819					33	5102	5212	6134	VM ON-67W / 22:00-33W / 06:00-67W
VMP11IA0-0002	67	8998	9192	10819					44	6541	6682	7865	VM ON-67W / 22:00-44W / 06:00-67W
VMP11IA0-0003	44	6541	6682	7865					22	3518	3594	4230	VM ON-44W / 22:00-22W / 06:00-44W
VMP11IA0-0004	44	6541	6682	7865					29	4634	4734	5572	VM ON-44W / 22:00-29W / 06:00-44W
VMP11IA0-0005	33	5102	5212	6134					17	2717	2776	3267	VM ON-33W / 22:00-17W / 06:00-33W
VMP11IA0-0006	33	5102	5212	6134					22	3518	3594	4230	VM ON-33W / 22:00-22W / 06:00-33W
VMP11IA0-0007	67	8998	9192	10819					33	5102	5212	6134	VM ON-67W / 00:00-33W / 06:00-67W
VMP11IA0-0008	67	8998	9192	10819					44	6541	6682	7865	VM ON-67W / 00:00-44W / 06:00-67W
VMP11IA0-0009	44	6541	6682	7865					22	3518	3594	4230	VM ON-44W / 00:00-22W / 06:00-44W
VMP11IA0-0010	44	6541	6682	7865					29	4634	4734	5572	VM ON-44W / 00:00-29W / 06:00-44W
VMP11IA0-0011	33	5102	5212	6134					17	2717	2776	3267	VM ON-33W / 00:00-17W / 06:00-33W
VMP11IA0-0012	33	5102	5212	6134					22	3518	3594	4230	VM ON-33W / 00:00-22W / 06:00-33W

Photometry

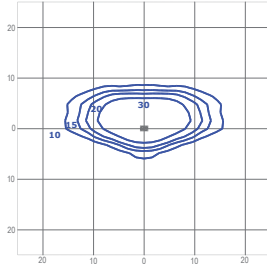
All published luminaire photometric testing performed by an external certified ISO 17025 laboratory.
To obtain an IES file specific to your project consult: www.creelighting-europe.com

075 - Type II Short



cd/klm
C0 - C180 C90 - C270 C27.5 - C207.5

Test Report #: 203-QL21-R10-075

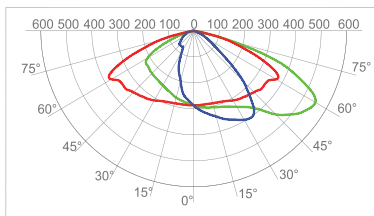


lux
TRMA-2-075-15L-407
Mounting Height: 8m

LUMEN OUTPUT - 075 (Type II Short)			
Lumen Package	2700K	3000K	4000K
	Initial Delivered Lumens*	Initial Delivered Lumens*	Initial Delivered Lumens*
15L	11584	13117	14563
13L	10136	11477	12743
11L	8688	9838	10922
9L	7240	8198	9102

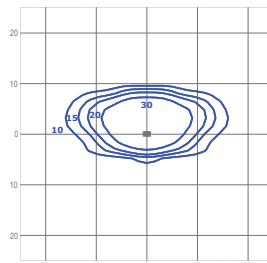
* Initial delivered lumens at 25°C (77°F). Actual production yield may vary between -4 and +10% of initial delivered lumens

100 - Type II Short



cd/klm
C0 - C180 C90 - C270 C20 - C200

Test Report #: 203-QL21-R06-100

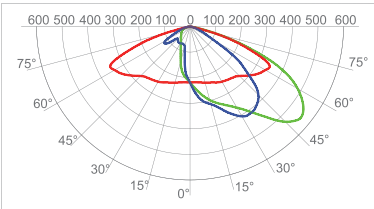


lux
TRMA-2-100-15L-407
Mounting Height: 8m

LUMEN OUTPUT - 100 (Type II Short)			
Lumen Package	2700K	3000K	4000K
	Initial Delivered Lumens*	Initial Delivered Lumens*	Initial Delivered Lumens*
15L	11491	13012	14447
13L	10055	11386	12641
11L	8619	9759	10835
9L	7182	8133	9029

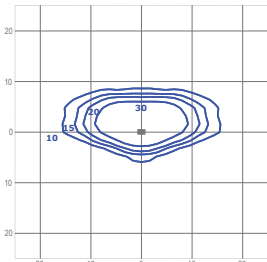
* Initial delivered lumens at 25°C (77°F). Actual production yield may vary between -4 and +10% of initial delivered lumens

125 - Type II Short



cd/klm
C0 - C180 C90 - C270 C35 - C215

Test Report #: 203-QL21-R11-125

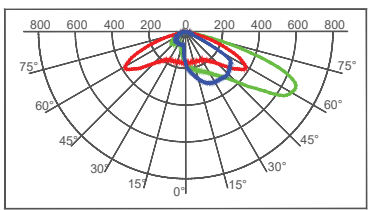


lux
TRMA-2-125-15L-407
Mounting Height: 8m

LUMEN OUTPUT -125 (Type II Short)			
Lumen Package	2700K	3000K	4000K
	Initial Delivered Lumens*	Initial Delivered Lumens*	Initial Delivered Lumens*
15L	11754	13309	14777
13L	10285	11646	12930
11L	8815	9982	11083
9L	7346	8318	9236

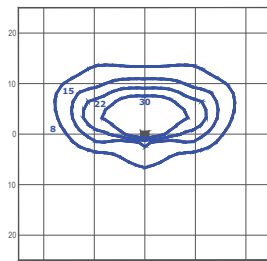
* Initial delivered lumens at 25°C (77°F). Actual production yield may vary between -4 and +10% of initial delivered lumens

150 - Type III Short



cd/klm
C0 - C180 C90 - C270 C27.5 - C207.5

Test Report #: 1038-QL21-R02-150



lux
TRMA-2-150-15L-407
Mounting Height: 8m

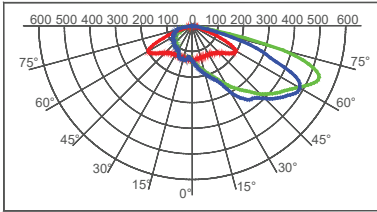
LUMEN OUTPUT - 150 (Type III Short)			
Lumen Package	2700K	3000K	4000K
	Initial Delivered Lumens*	Initial Delivered Lumens*	Initial Delivered Lumens*
15L	12702	12976	15273
13L	11114	11364	13364
11L	9527	9732	11455
9L	7939	8110	9546

* Initial delivered lumens at 25°C (77°F). Actual production yield may vary between -4 and +10% of initial delivered lumens

Photometry

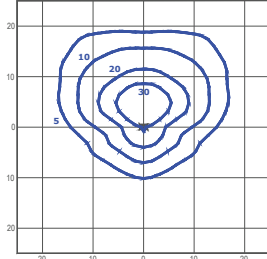
All published luminaire photometric testing performed by an external certified ISO 17025 laboratory.
To obtain an IES file specific to your project consult: www.creelighting-europe.com

200 - Type IV Short



cd/klm
C0 - C180 C90 - C270 C55 - C235

Test Report #: 1038-QL21-R03-200



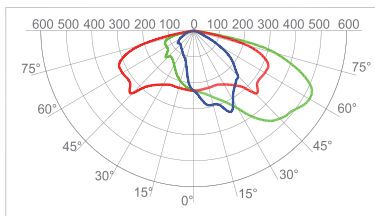
lux
TRMA-2-200-15L-407
Mounting Height: 8m

LUMEN OUTPUT - 200 (Type IV Short)

Lumen Package	2700K	3000K	4000K
	Initial Delivered Lumens*	Initial Delivered Lumens*	Initial Delivered Lumens*
15L	11594	13128	14576
13L	10145	11487	12754
11L	8696	9846	10932
9L	7246	8205	9110

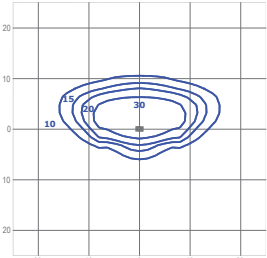
* Initial delivered lumens at 25°C (77°F). Actual production yield may vary between -4 and +10% of initial delivered lumens

SCP - Type II Short



cd/klm
C0 - C180 C90 - C270 C22.5 - C202.5

Test Report #: 203-QL21-R08-SCP



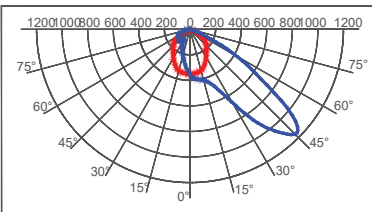
lux
TRMA-2-SCP-15L-407
Mounting Height: 8m

LUMEN OUTPUT - SCP (Type II Short)

Lumen Package	2700K	3000K	4000K
	Initial Delivered Lumens*	Initial Delivered Lumens*	Initial Delivered Lumens*
15L	12540	12810	15078
13L	10972	11209	13193
11L	9405	9608	11309
9L	7837	8007	9424

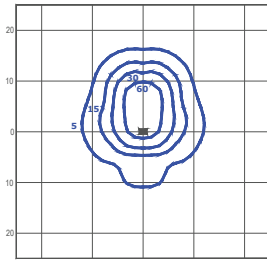
* Initial delivered lumens at 25°C (77°F). Actual production yield may vary between -4 and +10% of initial delivered lumens

AFN - Area Flood Narrow



cd/klm
C0 - C180 C90 - C270 C15 - C195

Test Report #: 1038-QL21-R04-AFN



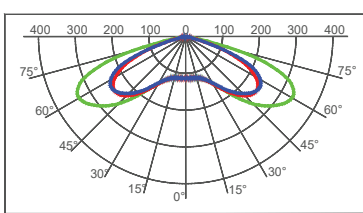
lux
TRSM-2-AFN-15L-407
Mounting Height: 8m

LUMEN OUTPUT - AFN (Area Flood Narrow)

Lumen Package	2700K	3000K	4000K
	Initial Delivered Lumens*	Initial Delivered Lumens*	Initial Delivered Lumens*
15L	12160	13769	15287
13L	10640	12048	13376
11L	9120	10327	11465
9L	7600	8606	9554

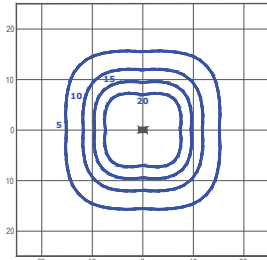
* Initial delivered lumens at 25°C (77°F). Actual production yield may vary between -4 and +10% of initial delivered lumens

ARS - Roto-Symmetric Area



cd/klm
C0 - C180 C90 - C270 C47.5 - C227.5

Test Report #: 1038-QL21-R05-ARS



lux
TRMA-2-ARS-15L-407
Mounting Height: 8m

LUMEN OUTPUT - ARS (Roto-Symmetric Area)

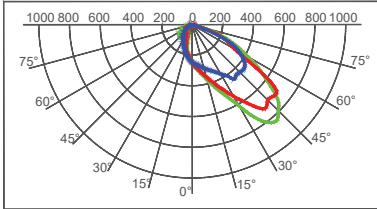
Lumen Package	2700K	3000K	4000K
	Initial Delivered Lumens*	Initial Delivered Lumens*	Initial Delivered Lumens*
15L	11993	13581	15078
13L	10494	11883	13193
11L	8995	10185	11309
9L	7496	8488	9424

* Initial delivered lumens at 25°C (77°F). Actual production yield may vary between -4 and +10% of initial delivered lumens

Photometry

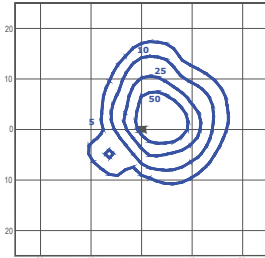
All published luminaire photometric testing performed by an external certified ISO 17025 laboratory.
To obtain an IES file specific to your project consult: www.creelighting-europe.com

PCR - Pedestrian Crossing Right



cd/klm
C0 - C180 C90 - C270 C20 - C200

Test Report #: 1038-QL21-R06-PCR

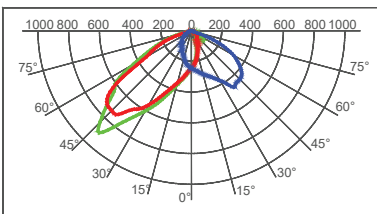


lux
TRMA-2-PCR-15L-407
Mounting Height: 8m

LUMEN OUTPUT - PCR (Pedestrian Crossing Right)			
Lumen Package	2700K	3000K	4000K
	Initial Delivered Lumens*	Initial Delivered Lumens*	Initial Delivered Lumens*
15L	12936	13215	15554
13L	11319	11563	13610
11L	9702	9911	11666
9L	8085	8259	9721

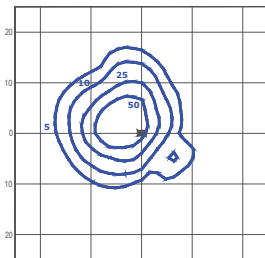
* Initial delivered lumens at 25°C (77°F). Actual production yield may vary between -4 and +10% of initial delivered lumens

PCL - Pedestrian Crossing Left



cd/klm
C0 - C180 C90 - C270 C162.5 - C342.5

Test Report #: 1038-QL21-R07-PCL

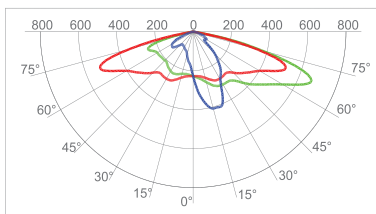


lux
TRMA-2-PCL-15L-407
Mounting Height: 8m

LUMEN OUTPUT - PCL (Pedestrian Crossing Left)			
Lumen Package	2700K	3000K	4000K
	Initial Delivered Lumens*	Initial Delivered Lumens*	Initial Delivered Lumens*
15L	12920	13199	15535
13L	11305	11549	13593
11L	9690	9899	11651
9L	8075	8249	9709

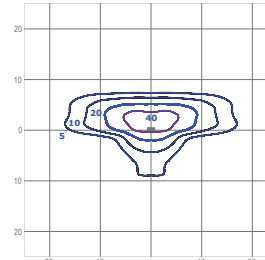
* Initial delivered lumens at 25°C (77°F). Actual production yield may vary between -4 and +10% of initial delivered lumens

K07 - Narrow Street



cd/klm
C0 - C180 C90 - C270 C05 - C185

Test Report #: 1088-QL21-R05

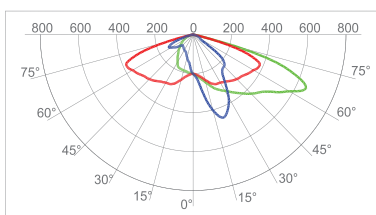


lux
TRSA-2-K07-8L-407
Mounting Height: 6m

LUMEN OUTPUT - K07 (Narrow Street)			
Lumen Package	2700K	3000K	4000K
	Initial Delivered Lumens*	Initial Delivered Lumens*	Initial Delivered Lumens*
9L	7674	8690	9648
11L	9209	10428	11578
13L	10744	12166	13508
15L	12279	13904	15437

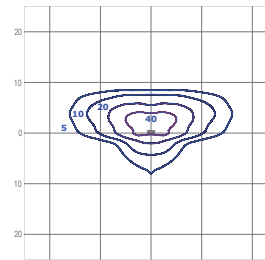
* Initial delivered lumens at 25°C (77°F). Actual production yield may vary between -4 and +10% of initial delivered lumens

K10 - Medium Street



cd/klm
C0 - C180 C90 - C270 C20 - C200

Test Report #: 1088-QL21-R06



lux
TRSA-2-K10-8L-407
Mounting Height: 6m

LUMEN OUTPUT - K10 (Medium Street)			
Lumen Package	2700K	3000K	4000K
	Initial Delivered Lumens*	Initial Delivered Lumens*	Initial Delivered Lumens*
9L	7682	8698	9657
11L	9218	10438	11589
13L	10754	12178	13520
15L	12291	13917	15452

* Initial delivered lumens at 25°C (77°F). Actual production yield may vary between -4 and +10% of initial delivered lumens

Energy DUE

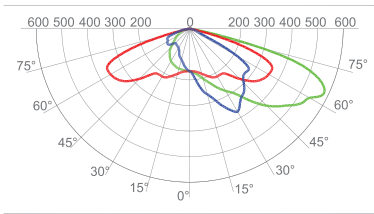
LED Street/Area Luminaire



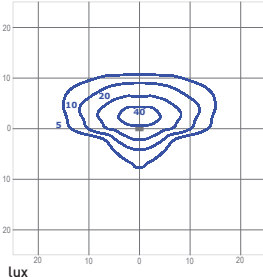
Photometry

All published luminaire photometric testing performed by an external certified ISO 17025 laboratory.
To obtain an IES file specific to your project consult: www.creelighting-europe.com

K12 - Broad Street



cd/klm
C0 - C180 C90 - C270 C20 - C200



lux

TRMA-2-K12-8L-407
Mounting Height: 6m

LUMEN OUTPUT - K12 (Broad Street)			
Lumen Package	2700K	3000K	4000K
		Initial Delivered Lumens*	Initial Delivered Lumens*
9L	7519	8514	9453
11L	9023	10217	11344
13L	10527	11920	13234
15L	12031	13623	15125

* Initial delivered lumens at 25°C (77°F). Actual production yield may vary between -4 and +10% of initial delivered lumens

Test Report #: 1088-QL21-R07