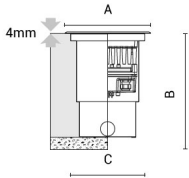


# QUAD200

trim above the ground - recessed deep box



Arcluce Code      **0765010A-840-30**  
 Ex Code            **O6581-30 CEI**  
 Code EAN          **8054378200540**



## Technical information

<b>Light source:</b>	LED, 4000K, CRI>80
<b>Luminaire efficacy:</b>	100lm/W
<b>Luminaire:</b>	37W , 3700lm
<b>LED life time:</b>	> 60000h - L80 - B20 (Ta 25°C)
<b>High colour consistency:</b>	< 3 SDCM
<b>Power supply:</b>	220-240V 50/60Hz
<b>Wiring:</b>	ON/OFF
<b>Optics:</b>	elliptic 9°x52°
<b>Color:</b>	Stainless Steel - 30
<b>Weight:</b>	6 kg
<b>Size:</b>	A: 230mm B: 284mm C: 202mm

CE

IP67

IK10

⊕

👣

KG  
1500

🌡️ ↓

## Appliance

- Die-cast aluminium body (EN 47100).
- AISI 316L stainless steel trim.
- AISI 316L stainless steel edge for flush with ground versions.
- Double layer polyester powder paint resistant to corrosion and salt spray fog.
- Silicone rubber gaskets.
- AISI 316 stainless steel external screws.
- PMMA lenses for LEDs.
- Screen made of 10mm thermal-shock resistant tempered glass.
- 1000-1500Kg static load capacity.
- High quality LED sources characterized according to IES TM-30, with high color consistency <3SDCM and long useful life >60000 hours at L80.

## Installation

- Recessed installation.
- Supplied with galvanized and painted steel recessed installation box.
- Supplied with power cable (0.7m).

## Note

- These fittings are suitable for the modern control systems. For the various possibilities, please see section "Controlling the light".

## Norm

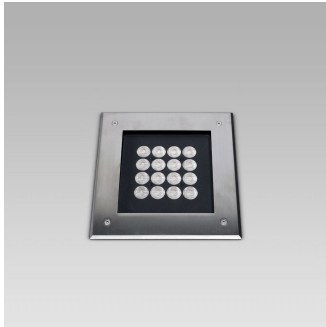
- It complies with standards EN 60598-1 and EN 60598-2-13.

# QUAD200

trim above the ground - recessed deep box



Arcluce Code           **0765010A-840-30**  
Ex Code               **O6581-30 CEI**  
Code EAN             **8054378200540**



## Specifications

The inground recessed luminaire for architectural lighting with a modern design Die-cast aluminium body (EN 47100). AISI 316L stainless steel trim. AISI 316L stainless steel edge for flush with ground versions. Double layer polyester powder paint resistant to corrosion and salt spray fog. Silicone rubber gaskets. AISI 316 stainless steel external screws. PMMA lenses for LEDs. Screen made of 10mm thermal-shock resistant tempered glass. 1000-1500Kg static load capacity. High quality LED sources characterized according to IES TM-30, with high color consistency <3SDCM and long useful life >60000 hours at L80.

It complies with standards EN 60598-1 and EN 60598-2-13.

LED sources available in color temperatures 4000K

High color consistency < 3 SDCM and LED life time > 60000h - L80 - B20 (Ta 25°C).

System effectiveness, minimum 100lm/W

Luminaire in insulation class I.

DRIVER INCLUDED.

Recessed installation. Supplied with galvanized and painted steel recessed installation box. Supplied with power cable (0.7m).

These fittings are suitable for the modern control systems. For the various possibilities, please see section "Controlling the light".

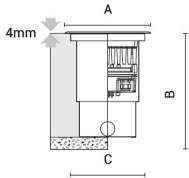
Brand ARCLUCE mod. QUAD200

# QUAD200

trim above the ground - recessed deep box

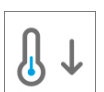
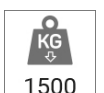
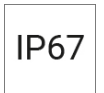


Arcluce Code      **0765013A-840-30**  
 Ex Code          **O6574-30 CEI**  
 Code EAN         **8054378200502**



## Technical information

<b>Light source:</b>	LED, 4000K, CRI>80
<b>Luminaire efficacy:</b>	103lm/W
<b>Luminaire:</b>	37W , 3800lm
<b>LED life time:</b>	> 60000h - L80 - B20 (Ta 25°C)
<b>High colour consistency:</b>	< 3 SDCM
<b>Power supply:</b>	220-240V 50/60Hz
<b>Wiring:</b>	ON/OFF
<b>Optics:</b>	medium 25°
<b>Color:</b>	Stainless Steel - 30
<b>Weight:</b>	6 kg
<b>Size:</b>	A: 230mm B: 284mm C: 202mm



## Appliance

- Die-cast aluminium body (EN 47100).
- AISI 316L stainless steel trim.
- AISI 316L stainless steel edge for flush with ground versions.
- Double layer polyester powder paint resistant to corrosion and salt spray fog.
- Silicone rubber gaskets.
- AISI 316 stainless steel external screws.
- PMMA lenses for LEDs.
- Screen made of 10mm thermal-shock resistant tempered glass.
- 1000-1500Kg static load capacity.
- High quality LED sources characterized according to IES TM-30, with high color consistency <3SDCM and long useful life >60000 hours at L80.

## Installation

- Recessed installation.
- Supplied with galvanized and painted steel recessed installation box.
- Supplied with power cable (0.7m).

## Note

- These fittings are suitable for the modern control systems. For the various possibilities, please see section "Controlling the light".

## Norm

- It complies with standards EN 60598-1 and EN 60598-2-13.

# QUAD200

trim above the ground - recessed deep box



Arcluce Code           **0765013A-840-30**  
Ex Code               **O6574-30 CEI**  
Code EAN              **8054378200502**



## Specifications

The inground recessed luminaire for architectural lighting with a modern design Die-cast aluminium body (EN 47100). AISI 316L stainless steel trim. AISI 316L stainless steel edge for flush with ground versions. Double layer polyester powder paint resistant to corrosion and salt spray fog. Silicone rubber gaskets. AISI 316 stainless steel external screws. PMMA lenses for LEDs. Screen made of 10mm thermal-shock resistant tempered glass. 1000-1500Kg static load capacity. High quality LED sources characterized according to IES TM-30, with high color consistency <3SDCM and long useful life >60000 hours at L80.

It complies with standards EN 60598-1 and EN 60598-2-13.

LED sources available in color temperatures 4000K

High color consistency < 3 SDCM and LED life time > 60000h - L80 - B20 (Ta 25°C).

System effectiveness, minimum 103lm/W

Luminaire in insulation class I.

DRIVER INCLUDED.

Recessed installation. Supplied with galvanized and painted steel recessed installation box. Supplied with power cable (0.7m).

These fittings are suitable for the modern control systems. For the various possibilities, please see section "Controlling the light".

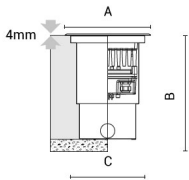
Brand ARCLUCE mod. QUAD200

# QUAD200

trim above the ground - recessed deep box

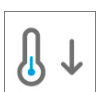
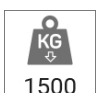
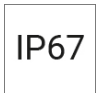


Arcluce Code      **0765017A-840-30**  
 Ex Code            **O6571-30 CEI**  
 Code EAN          **8054378200489**



## Technical information

<b>Light source:</b>	LED, 4000K, CRI>80
<b>Luminaire efficacy:</b>	109lm/W
<b>Luminaire:</b>	37W , 4050lm
<b>LED life time:</b>	> 60000h - L80 - B20 (Ta 25°C)
<b>High colour consistency:</b>	< 3 SDCM
<b>Power supply:</b>	220-240V 50/60Hz
<b>Wiring:</b>	ON/OFF
<b>Optics:</b>	spot 9°
<b>Color:</b>	Stainless Steel - 30
<b>Weight:</b>	6 kg
<b>Size:</b>	A: 230mm B: 284mm C: 202mm



## Appliance

- Die-cast aluminium body (EN 47100).
- AISI 316L stainless steel trim.
- AISI 316L stainless steel edge for flush with ground versions.
- Double layer polyester powder paint resistant to corrosion and salt spray fog.
- Silicone rubber gaskets.
- AISI 316 stainless steel external screws.
- PMMA lenses for LEDs.
- Screen made of 10mm thermal-shock resistant tempered glass.
- 1000-1500Kg static load capacity.
- High quality LED sources characterized according to IES TM-30, with high color consistency <3SDCM and long useful life >60000 hours at L80.

## Installation

- Recessed installation.
- Supplied with galvanized and painted steel recessed installation box.
- Supplied with power cable (0.7m).

## Note

- These fittings are suitable for the modern control systems. For the various possibilities, please see section "Controlling the light".

## Norm

- It complies with standards EN 60598-1 and EN 60598-2-13.

## QUAD200

trim above the ground - recessed deep box



Arcluce Code           **0765017A-840-30**  
Ex Code               **O6571-30 CEI**  
Code EAN              **8054378200489**

---



### Specifications

The inground recessed luminaire for architectural lighting with a modern design Die-cast aluminium body (EN 47100). AISI 316L stainless steel trim. AISI 316L stainless steel edge for flush with ground versions. Double layer polyester powder paint resistant to corrosion and salt spray fog. Silicone rubber gaskets. AISI 316 stainless steel external screws. PMMA lenses for LEDs. Screen made of 10mm thermal-shock resistant tempered glass. 1000-1500Kg static load capacity. High quality LED sources characterized according to IES TM-30, with high color consistency <3SDCM and long useful life >60000 hours at L80.

It complies with standards EN 60598-1 and EN 60598-2-13.

LED sources available in color temperatures 4000K

High color consistency < 3 SDCM and LED life time > 60000h - L80 - B20 (Ta 25°C).

System effectiveness, minimum 109lm/W

Luminaire in insulation class I.

DRIVER INCLUDED.

Recessed installation. Supplied with galvanized and painted steel recessed installation box. Supplied with power cable (0.7m).

These fittings are suitable for the modern control systems. For the various possibilities, please see section "Controlling the light".

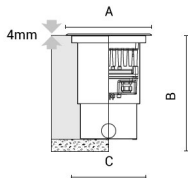
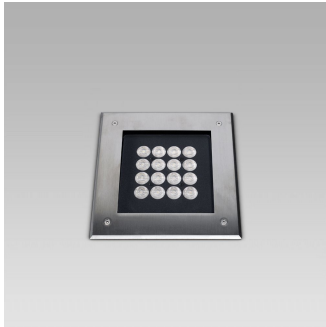
Brand ARCLUCE mod. QUAD200

# QUAD200

trim above the ground - recessed deep box

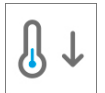


Arcluce Code      **0765019A-840-30**  
 Ex Code            **O6577-30 CEI**  
 Code EAN          **8054378200526**



## Technical information

<b>Light source:</b>	LED, 4000K, CRI>80
<b>Luminaire efficacy:</b>	95lm/W
<b>Luminaire:</b>	37W , 3500lm
<b>LED life time:</b>	> 60000h - L80 - B20 (Ta 25°C)
<b>High colour consistency:</b>	< 3 SDCM
<b>Power supply:</b>	220-240V 50/60Hz
<b>Wiring:</b>	ON/OFF
<b>Optics:</b>	wide flood 47°
<b>Color:</b>	Stainless Steel - 30
<b>Weight:</b>	6 kg
<b>Size:</b>	A: 230mm B: 284mm C: 202mm



## Appliance

- Die-cast aluminium body (EN 47100).
- AISI 316L stainless steel trim.
- AISI 316L stainless steel edge for flush with ground versions.
- Double layer polyester powder paint resistant to corrosion and salt spray fog.
- Silicone rubber gaskets.
- AISI 316 stainless steel external screws.
- PMMA lenses for LEDs.
- Screen made of 10mm thermal-shock resistant tempered glass.
- 1000-1500Kg static load capacity.
- High quality LED sources characterized according to IES TM-30, with high color consistency <3SDCM and long useful life >60000 hours at L80.

## Installation

- Recessed installation.
- Supplied with galvanized and painted steel recessed installation box.
- Supplied with power cable (0.7m).

## Note

- These fittings are suitable for the modern control systems. For the various possibilities, please see section "Controlling the light".

## Norm

- It complies with standards EN 60598-1 and EN 60598-2-13.

# QUAD200

trim above the ground - recessed deep box



Arcluce Code           **0765019A-840-30**  
Ex Code               **O6577-30 CEI**  
Code EAN              **8054378200526**



## Specifications

The inground recessed luminaire for architectural lighting with a modern design Die-cast aluminium body (EN 47100). AISI 316L stainless steel trim. AISI 316L stainless steel edge for flush with ground versions. Double layer polyester powder paint resistant to corrosion and salt spray fog. Silicone rubber gaskets. AISI 316 stainless steel external screws. PMMA lenses for LEDs. Screen made of 10mm thermal-shock resistant tempered glass. 1000-1500Kg static load capacity. High quality LED sources characterized according to IES TM-30, with high color consistency <3SDCM and long useful life >60000 hours at L80.

It complies with standards EN 60598-1 and EN 60598-2-13.

LED sources available in color temperatures 4000K

High color consistency < 3 SDCM and LED life time > 60000h - L80 - B20 (Ta 25°C).

System effectiveness, minimum 95lm/W

Luminaire in insulation class I.

DRIVER INCLUDED.

Recessed installation. Supplied with galvanized and painted steel recessed installation box. Supplied with power cable (0.7m).

These fittings are suitable for the modern control systems. For the various possibilities, please see section "Controlling the light".

Brand ARCLUCE mod. QUAD200



# QUAD200

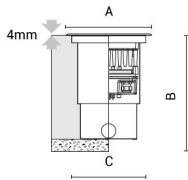
trim above the ground - recessed deep box



Arcluce Code **0765050A-840-30**

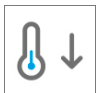
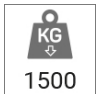
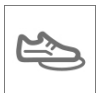
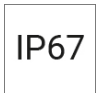
Ex Code

Code EAN **8054378403880**



## Technical information

<b>Light source:</b>	LED, 4000K, CRI>80
<b>Luminaire efficacy:</b>	92lm/W
<b>Luminaire:</b>	37W , 3400lm
<b>LED life time:</b>	> 60000h - L80 - B20 (Ta 25°C)
<b>High colour consistency:</b>	< 3 SDCM
<b>Power supply:</b>	220-240V 50/60Hz
<b>Wiring:</b>	ON/OFF
<b>Optics:</b>	wall washer lmax=19°
<b>Color:</b>	Stainless Steel - 30
<b>Weight:</b>	6 kg
<b>Size:</b>	A: 230mm B: 284mm C: 202mm



## Appliance

- Die-cast aluminium body (EN 47100).
- AISI 316L stainless steel trim.
- AISI 316L stainless steel edge for flush with ground versions.
- Double layer polyester powder paint resistant to corrosion and salt spray fog.
- Silicone rubber gaskets.
- AISI 316 stainless steel external screws.
- PMMA lenses for LEDs.
- Screen made of 10mm thermal-shock resistant tempered glass.
- 1000-1500Kg static load capacity.
- High quality LED sources characterized according to IES TM-30, with high color consistency <3SDCM and long useful life >60000 hours at L80.

## Installation

- Recessed installation.
- Supplied with galvanized and painted steel recessed installation box.
- Supplied with power cable (0.7m).

## Note

- These fittings are suitable for the modern control systems. For the various possibilities, please see section "Controlling the light".

## Norm

- It complies with standards EN 60598-1 and EN 60598-2-13.

# QUAD200

trim above the ground - recessed deep box



Arcluce Code           **0765050A-840-30**

Ex Code

Code EAN               **8054378403880**



## Specifications

The inground recessed luminaire for architectural lighting with a modern design Die-cast aluminium body (EN 47100). AISI 316L stainless steel trim. AISI 316L stainless steel edge for flush with ground versions. Double layer polyester powder paint resistant to corrosion and salt spray fog. Silicone rubber gaskets. AISI 316 stainless steel external screws. PMMA lenses for LEDs. Screen made of 10mm thermal-shock resistant tempered glass. 1000-1500Kg static load capacity. High quality LED sources characterized according to IES TM-30, with high color consistency <3SDCM and long useful life >60000 hours at L80.

It complies with standards EN 60598-1 and EN 60598-2-13.

LED sources available in color temperatures 4000K

High color consistency < 3 SDCM and LED life time > 60000h - L80 - B20 (Ta 25°C).

System effectiveness, minimum 92lm/W

Luminaire in insulation class I.

DRIVER INCLUDED.

Recessed installation. Supplied with galvanized and painted steel recessed installation box. Supplied with power cable (0.7m).

These fittings are suitable for the modern control systems. For the various possibilities, please see section "Controlling the light".

Brand ARCLUCE mod. QUAD200