

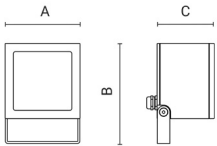
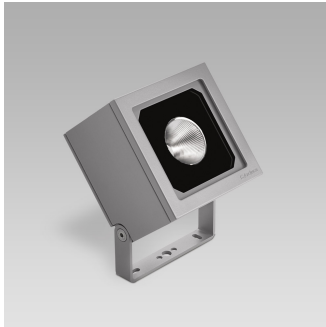
# PIXOL150

performance



Arcluce Code **0655011A-830-21**

Ex Code



## Technical information

<b>Light source:</b>	LED, 3000K, CRI>80
<b>Luminaire efficacy:</b>	100lm/W
<b>Luminaire:</b>	31W , 3100lm
<b>LED life time:</b>	> 60000h - L80 - B20 (Ta 25°C)
<b>High colour consistency:</b>	< 3 SDCM
<b>Power supply:</b>	220-240V 50/60Hz
<b>Wiring:</b>	ON/OFF
<b>Optics:</b>	narrow 15°
<b>Color:</b>	Aluminium - 21
<b>Weight:</b>	2.6 kg
<b>Size:</b>	A: 150mm B: 200mm C: 115mm

CE

IP66

IK08

⊕

0,02m<sup>2</sup>

## Appliance

- Die-cast aluminium body and trim (EN 47100).
- Double layer polyester powder paint resistant to corrosion and salt spray fog.
- Silicone rubber gaskets.
- AISI 316 stainless steel external screws.
- Reflector made of engineering plastic metalized in high-vacuum.
- Screen made of 5mm thermal-shock resistant tempered glass.
- High quality LED sources characterized according to IES TM-30, with high color consistency <3SDCM and long useful life >60000 hours at L80.

## Installation

- Galvanized and painted steel bracket.
- M16 stainless steel cable gland.

## Note

- Available versions with Casambi and other modern control systems, for more information see "Light controls" section.

## Norm

- It complies with standards EN 60598-1 and EN 60598-2-5.

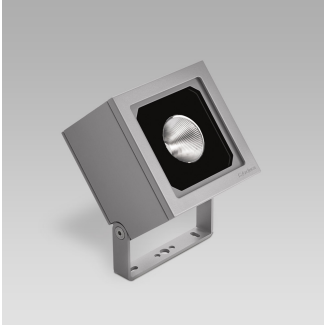
# PIXOL150

performance



Arcluce Code **0655011A-830-21**

Ex Code



## Specifications

Floodlight for outdoor lighting, able to integrate into any architectural context thanks to its clean design and functional and comfortable lighting.

Die-cast aluminium body and trim (EN 47100). Double layer polyester powder paint resistant to corrosion and salt spray fog. Silicone rubber gaskets. AISI 316 stainless steel external screws. Reflector made of engineering plastic metalized in high-vacuum. Screen made of 5mm thermal-shock resistant tempered glass. High quality LED sources characterized according to IES TM-30, with high color consistency <3SDCM and long useful life >60000 hours at L80.

It complies with standards EN 60598-1 and EN 60598-2-5.

LED sources available in color temperatures 3000K

High color consistency < 3 SDCM and LED life time > 60000h - L80 - B20 (Ta 25°C).

System effectiveness, minimum 100lm/W

Luminaire in insulation class I.

DRIVER INCLUDED.

Galvanized and painted steel bracket. M16 stainless steel cable gland.

Available versions with Casambi and other modern control systems, for more information see "Light controls" section.

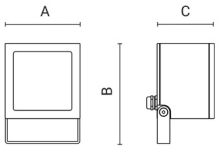
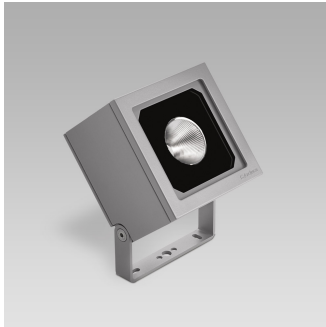
Brand ARCLUCE mod. PIXOL150

# PIXOL150

performance



Arcluce Code      **0655012A-830-21**  
Ex Code



## Technical information

<b>Light source:</b>	LED, 3000K, CRI>80
<b>Luminaire efficacy:</b>	100lm/W
<b>Luminaire:</b>	31W , 3100lm
<b>LED life time:</b>	> 60000h - L80 - B20 (Ta 25°C)
<b>High colour consistency:</b>	< 3 SDCM
<b>Power supply:</b>	220-240V 50/60Hz
<b>Wiring:</b>	ON/OFF
<b>Optics:</b>	flood 26°
<b>Color:</b>	Aluminium - 21
<b>Weight:</b>	2.6 kg
<b>Size:</b>	A: 150mm B: 200mm C: 115mm

CE

IP66

IK08



0,02m<sup>2</sup>

## Appliance

- Die-cast aluminium body and trim (EN 47100).
- Double layer polyester powder paint resistant to corrosion and salt spray fog.
- Silicone rubber gaskets.
- AISI 316 stainless steel external screws.
- Reflector made of engineering plastic metalized in high-vacuum.
- Screen made of 5mm thermal-shock resistant tempered glass.
- High quality LED sources characterized according to IES TM-30, with high color consistency <3SDCM and long useful life >60000 hours at L80.

## Installation

- Galvanized and painted steel bracket.
- M16 stainless steel cable gland.

## Note

- Available versions with Casambi and other modern control systems, for more information see "Light controls" section.

## Norm

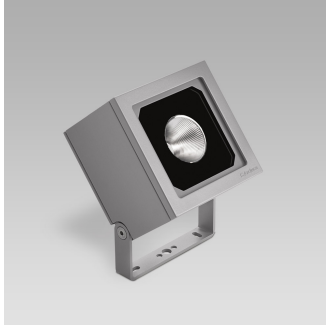
- It complies with standards EN 60598-1 and EN 60598-2-5.

# PIXOL150

performance



Arcluce Code           **0655012A-830-21**  
Ex Code



## Specifications

Floodlight for outdoor lighting, able to integrate into any architectural context thanks to its clean design and functional and comfortable lighting.

Die-cast aluminium body and trim (EN 47100). Double layer polyester powder paint resistant to corrosion and salt spray fog. Silicone rubber gaskets. AISI 316 stainless steel external screws. Reflector made of engineering plastic metalized in high-vacuum. Screen made of 5mm thermal-shock resistant tempered glass. High quality LED sources characterized according to IES TM-30, with high color consistency <3SDCM and long useful life >60000 hours at L80.

It complies with standards EN 60598-1 and EN 60598-2-5.

LED sources available in color temperatures 3000K

High color consistency < 3 SDCM and LED life time > 60000h - L80 - B20 (Ta 25°C).

System effectiveness, minimum 100lm/W

Luminaire in insulation class I.

DRIVER INCLUDED.

Galvanized and painted steel bracket. M16 stainless steel cable gland.

Available versions with Casambi and other modern control systems, for more information see "Light controls" section.

Brand ARCLUCE mod. PIXOL150

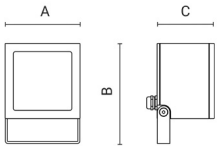
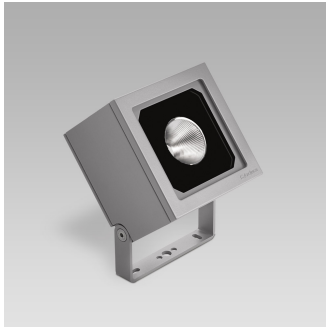
# PIXOL150

performance



Arcluce Code **0655013A-830-21**

Ex Code



## Technical information

<b>Light source:</b>	LED, 3000K, CRI>80
<b>Luminaire efficacy:</b>	100lm/W
<b>Luminaire:</b>	31W , 3100lm
<b>LED life time:</b>	> 60000h - L80 - B20 (Ta 25°C)
<b>High colour consistency:</b>	< 3 SDCM
<b>Power supply:</b>	220-240V 50/60Hz
<b>Wiring:</b>	ON/OFF
<b>Optics:</b>	wide flood 41°
<b>Color:</b>	Aluminium - 21
<b>Weight:</b>	2.6 kg
<b>Size:</b>	A: 150mm B: 200mm C: 115mm

CE

IP66

IK08



0,02m<sup>2</sup>

## Appliance

- Die-cast aluminium body and trim (EN 47100).
- Double layer polyester powder paint resistant to corrosion and salt spray fog.
- Silicone rubber gaskets.
- AISI 316 stainless steel external screws.
- Reflector made of engineering plastic metalized in high-vacuum.
- Screen made of 5mm thermal-shock resistant tempered glass.
- High quality LED sources characterized according to IES TM-30, with high color consistency <3SDCM and long useful life >60000 hours at L80.

## Installation

- Galvanized and painted steel bracket.
- M16 stainless steel cable gland.

## Note

- Available versions with Casambi and other modern control systems, for more information see "Light controls" section.

## Norm

- It complies with standards EN 60598-1 and EN 60598-2-5.

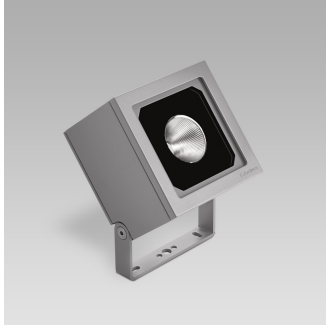
# PIXOL150

performance



Arcluce Code           **0655013A-830-21**

Ex Code



## Specifications

Floodlight for outdoor lighting, able to integrate into any architectural context thanks to its clean design and functional and comfortable lighting.

Die-cast aluminium body and trim (EN 47100). Double layer polyester powder paint resistant to corrosion and salt spray fog. Silicone rubber gaskets. AISI 316 stainless steel external screws. Reflector made of engineering plastic metalized in high-vacuum. Screen made of 5mm thermal-shock resistant tempered glass. High quality LED sources characterized according to IES TM-30, with high color consistency <3SDCM and long useful life >60000 hours at L80.

It complies with standards EN 60598-1 and EN 60598-2-5.

LED sources available in color temperatures 3000K

High color consistency < 3 SDCM and LED life time > 60000h - L80 - B20 (Ta 25°C).

System effectiveness, minimum 100lm/W

Luminaire in insulation class I.

DRIVER INCLUDED.

Galvanized and painted steel bracket. M16 stainless steel cable gland.

Available versions with Casambi and other modern control systems, for more information see "Light controls" section.

Brand ARCLUCE mod. PIXOL150

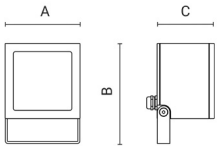
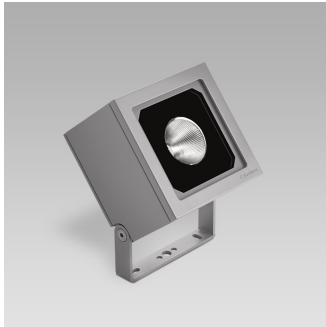
# PIXOL150

performance



Arcluce Code **0655014A-830-21**

Ex Code



## Technical information

<b>Light source:</b>	LED, 3000K, CRI>80
<b>Luminaire efficacy:</b>	98lm/W
<b>Luminaire:</b>	31W , 3050lm
<b>LED life time:</b>	> 60000h - L80 - B20 (Ta 25°C)
<b>High colour consistency:</b>	< 3 SDCM
<b>Power supply:</b>	220-240V 50/60Hz
<b>Wiring:</b>	ON/OFF
<b>Optics:</b>	very wide flood 58°
<b>Color:</b>	Aluminium - 21
<b>Weight:</b>	2.6 kg
<b>Size:</b>	A: 150mm B: 200mm C: 115mm

CE

IP66

IK08

⊕

0,02m<sup>2</sup>

## Appliance

- Die-cast aluminium body and trim (EN 47100).
- Double layer polyester powder paint resistant to corrosion and salt spray fog.
- Silicone rubber gaskets.
- AISI 316 stainless steel external screws.
- Reflector made of engineering plastic metalized in high-vacuum.
- Screen made of 5mm thermal-shock resistant tempered glass.
- High quality LED sources characterized according to IES TM-30, with high color consistency <3SDCM and long useful life >60000 hours at L80.

## Installation

- Galvanized and painted steel bracket.
- M16 stainless steel cable gland.

## Note

- Available versions with Casambi and other modern control systems, for more information see "Light controls" section.

## Norm

- It complies with standards EN 60598-1 and EN 60598-2-5.

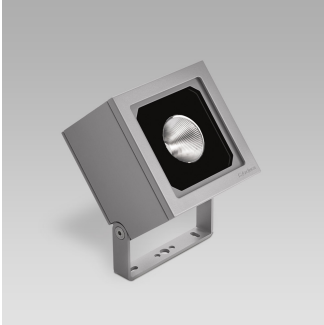
# PIXOL150

performance



Arcluce Code **0655014A-830-21**

Ex Code



## Specifications

Floodlight for outdoor lighting, able to integrate into any architectural context thanks to its clean design and functional and comfortable lighting.

Die-cast aluminium body and trim (EN 47100). Double layer polyester powder paint resistant to corrosion and salt spray fog. Silicone rubber gaskets. AISI 316 stainless steel external screws. Reflector made of engineering plastic metalized in high-vacuum. Screen made of 5mm thermal-shock resistant tempered glass. High quality LED sources characterized according to IES TM-30, with high color consistency <3SDCM and long useful life >60000 hours at L80.

It complies with standards EN 60598-1 and EN 60598-2-5.

LED sources available in color temperatures 3000K

High color consistency < 3 SDCM and LED life time > 60000h - L80 - B20 (Ta 25°C).

System effectiveness, minimum 98lm/W

Luminaire in insulation class I.

DRIVER INCLUDED.

Galvanized and painted steel bracket. M16 stainless steel cable gland.

Available versions with Casambi and other modern control systems, for more information see "Light controls" section.

Brand ARCLUCE mod. PIXOL150