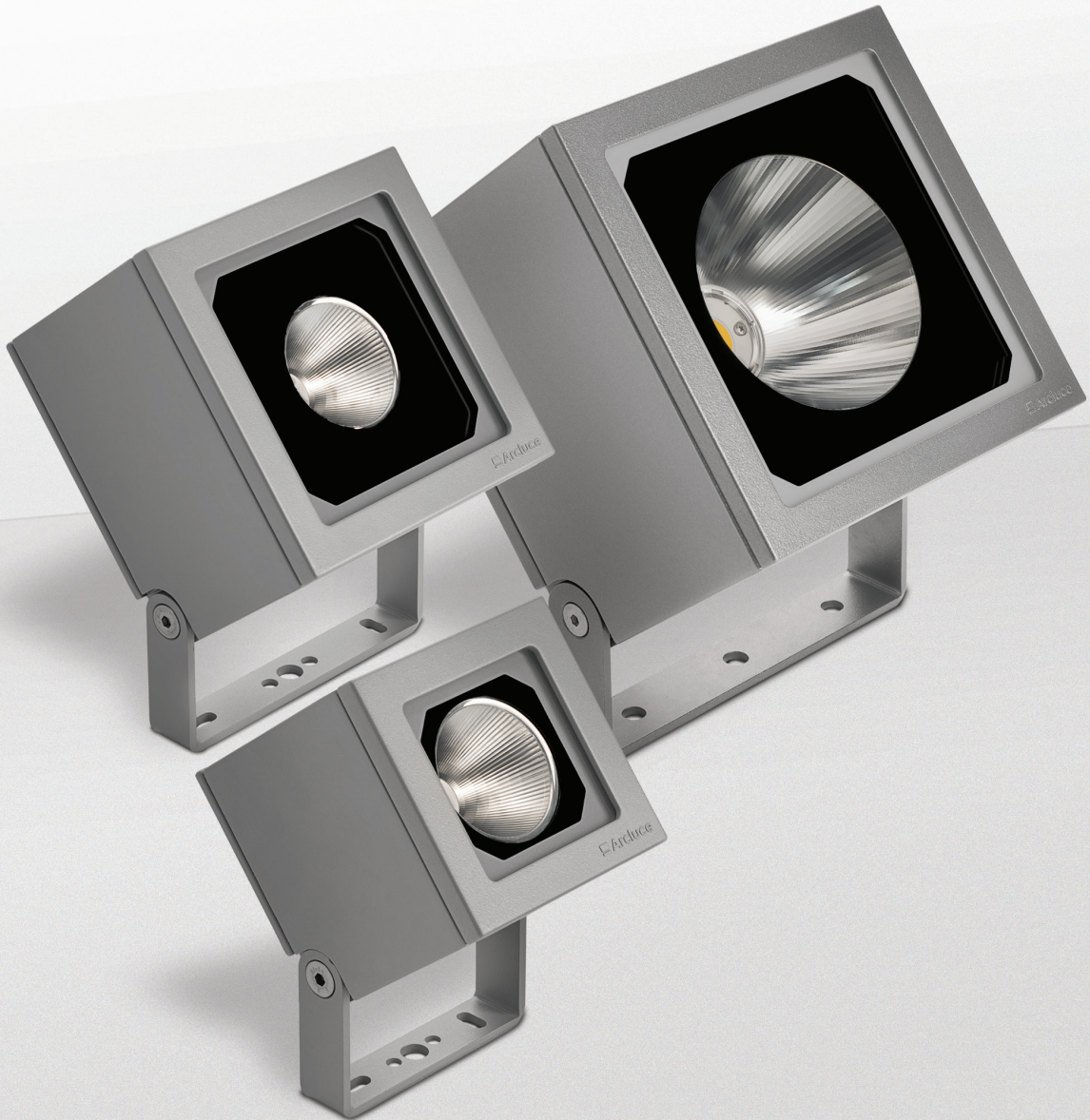


Outdoor floodlights

# PIXOL110/150/200

**NEW**





### LUMINAIRE



- Die-cast aluminium body and trim (EN 47100).
- Double layer polyester powder paint resistant to corrosion and salt spray fog.
- Silicone rubber gaskets.
- AISI 316 stainless steel external screws.
- Reflector made of engineering plastic metalized in high-vacuum.
- Screen made of 5mm thermal-shock resistant tempered glass.
- High quality LED sources characterized according to IES TM-30, with high color consistency <3SDCM and long useful life >60000 hours at L80.
- It complies with standards EN 60598-1 and EN 60598-2-5.

### INSTALLATION

- Galvanized and painted steel bracket.
- Stainless steel cable gland.
- Aiming possibility.

Available versions with Casambi and other modern control systems, for more information see "Light controls" section.

**PIXOL** is part of a series of coordinated products which includes: ceiling luminaires, facade fittings, bollards and outdoor floodlights.

STANDARD PRODUCT		AVAILABLE OPTIONS	
Wiring	ON/OFF (A)	DALI (B)	
CCT	3000K (-830)	4000K (-840)	
Colour	 21	 16	

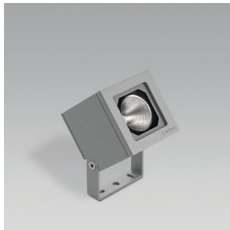


Photorealistic rendering.

Outdoor floodlights

# PIXOL110

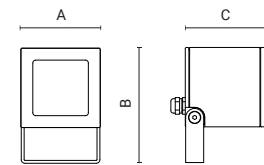
## PIXOL110 - PERFORMANCE







### STANDARD COLOUR

 21

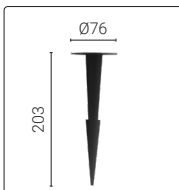

### DIMENSIONS



Code	Optic	Luminaire		CRI	CCT	Class	Wiring	Power Supply	A mm	B mm	C mm
		Watt	Lumen								
0654011A-830-21	 narrow 15°	14W	1600lm	80	3000K	⊕	ON/OFF	220-240V 50/60Hz	110	160	115
0654012A-830-21	 flood 26°	14W	1650lm	80	3000K	⊕	ON/OFF	220-240V 50/60Hz	110	160	115
0654013A-830-21	 wide flood 41°	14W	1600lm	80	3000K	⊕	ON/OFF	220-240V 50/60Hz	110	160	115
0654014A-830-21	 very-wide flood 58°	14W	1600lm	80	3000K	⊕	ON/OFF	220-240V 50/60Hz	110	160	115

The **photo** represents the family product range. You can see the correct image of each product (code) on the website.

## ACCESSORIES



Code	Kg
1099257X	0,05

Thermoplastic material peg.

LED driver included.



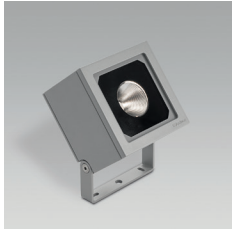
Photorealistic rendering.



Outdoor floodlights

# PIXOL150

## PIXOL150 - PERFORMANCE

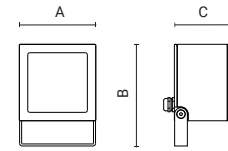






### STANDARD COLOUR

● 21



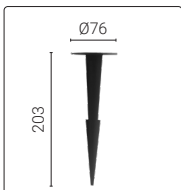
### DIMENSIONS



Code	Optic	Luminaire		CRI	CCT	Class	Wiring	Power Supply	A mm	B mm	C mm
		Watt	Lumen								
0655011A-830-21	 narrow 15°	31W	3100lm	80	3000K	⊕	ON/OFF	220-240V 50/60Hz	150	200	115
0655012A-830-21	 flood 26°	31W	3100lm	80	3000K	⊕	ON/OFF	220-240V 50/60Hz	150	200	115
0655013A-830-21	 wide flood 41°	31W	3100lm	80	3000K	⊕	ON/OFF	220-240V 50/60Hz	150	200	115
0655014A-830-21	 very-wide flood 58°	31W	3050lm	80	3000K	⊕	ON/OFF	220-240V 50/60Hz	150	200	115

The **photo** represents the family product range. You can see the correct image of each product (code) on the website.

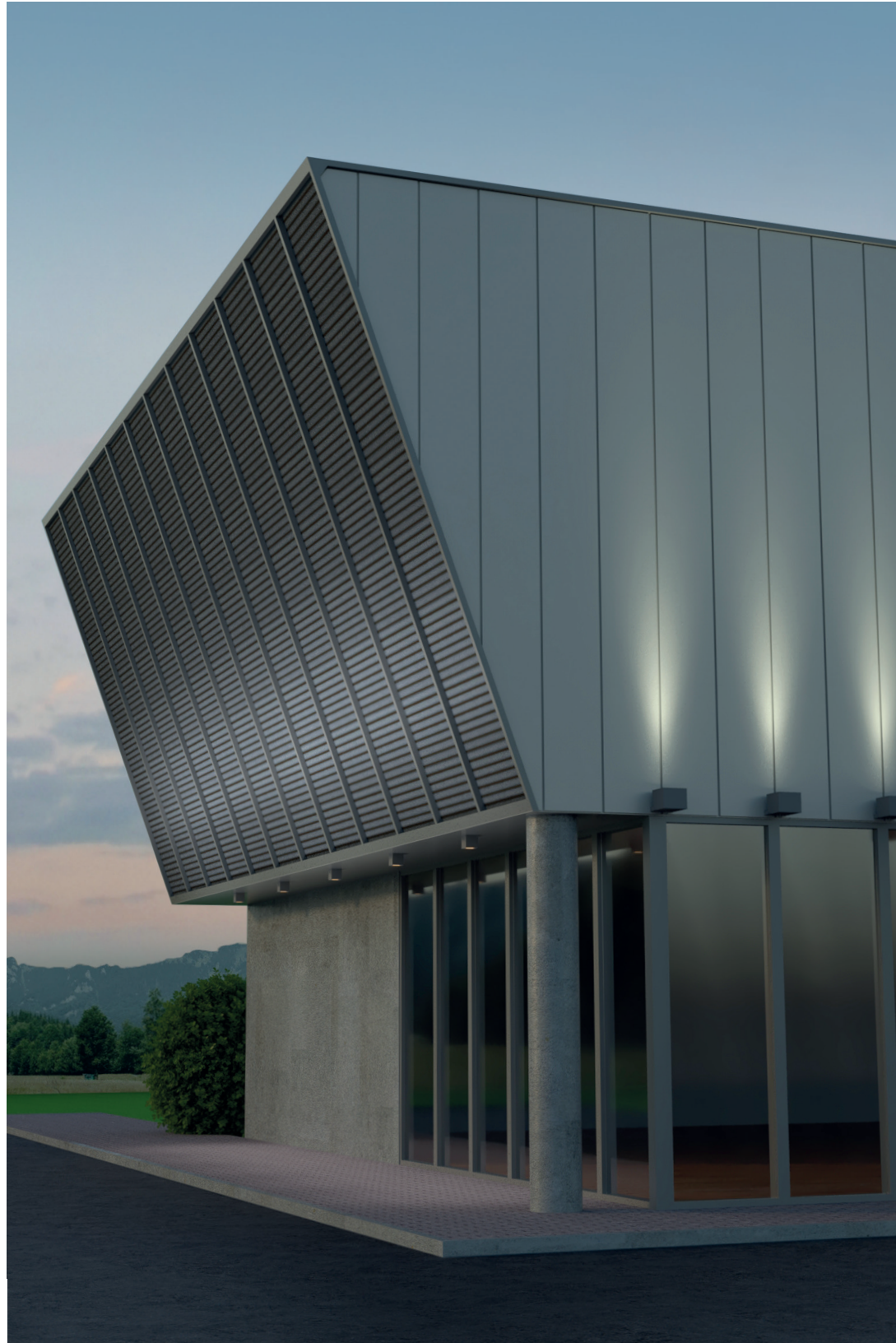
## ACCESSORIES



Code	Kg
1099257X	0,05

Thermoplastic material peg.

LED driver included.



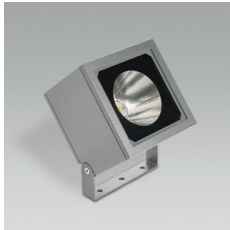
Photorealistic rendering.



Outdoor floodlights

# PIXOL200

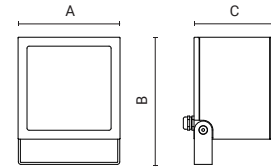
## PIXOL200 - PERFORMANCE




### STANDARD COLOUR

 21

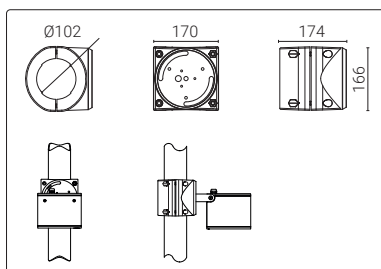

### DIMENSIONS



Code	Optic	Luminaire		CRI	CCT	Class	Wiring	Power Supply	A mm	B mm	C mm
		Watt	Lumen								
0656000A-830-21	 spot 10°	38W	4400lm	80	3000K	⊖	ON/OFF	220-240V 50/60Hz	200	250	160
0656010A-830-21	 narrow 15°	69W	8000lm	80	3000K	⊖	ON/OFF	220-240V 50/60Hz	200	250	160
0656001A-830-21	 flood 37°	38W	3900lm	80	3000K	⊕	ON/OFF	220-240V 50/60Hz	200	250	160
0656011A-830-21	 flood 40°	69W	7150lm	80	3000K	⊕	ON/OFF	220-240V 50/60Hz	200	250	160
0656003A-830-21	 very-wide flood 70°	38W	4300lm	80	3000K	⊖	ON/OFF	220-240V 50/60Hz	200	250	160
0656013A-830-21	 very-wide flood 70°	69W	8000lm	80	3000K	⊖	ON/OFF	220-240V 50/60Hz	200	250	160
0656020F-16	 spot 8°	40W			RGBW	⊖	DMX	220-240V 50/60Hz	200	250	160
0656021F-16	 medium 25°	40W			RGBW	⊕	DMX	220-240V 50/60Hz	200	250	160
0656022F-16	 wide flood 46°	40W			RGBW	⊕	DMX	220-240V 50/60Hz	200	250	160
0656023F-16	 elliptical 12°x54°	40W			RGBW	⊖	DMX	220-240V 50/60Hz	200	250	160
0656024F-16	 elliptical 54°x12°	40W			RGBW	⊖	DMX	220-240V 50/60Hz	200	250	160
0656025F-16	 asymmetric I <sub>max</sub> =19°	40W			RGBW	⊖	DMX	220-240V 50/60Hz	200	250	160

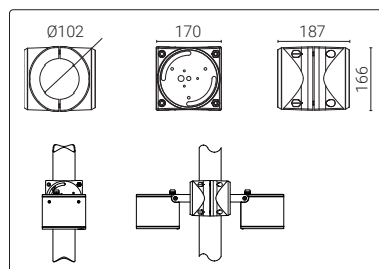
The photo represents the family product range. You can see the correct image of each product (code) on the website.

## ACCESSORIES



Code	Kg
1099472X-21	1,50

Adjustable pole bracket for 1 light fitting for Ø 102 mm pole.



Code	Kg
1099473X-16	1,80

Adjustable pole bracket for 2 light fittings for Ø 102 mm pole.



LED driver included.



Photorealistic rendering.