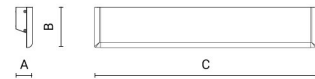
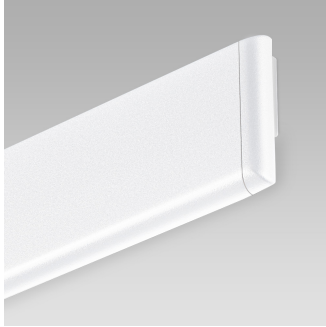


GAP

direct/indirect light



Arcluce Code **0447000A-830-11**
 Ex Code **K4710-11 CEI**
 Code EAN **8054378198755**



Technical information

Light source:	LED, 3000K, CRI>80
Indirect light source:	LED, 3000K, CRI>80
Luminaire efficacy:	28lm/W
Luminaire:	14W , 390lm
LED life time:	> 60000h - L80 - B20 (Ta 25°C)
High colour consistency:	< 3 SDCM
Power supply:	220-240V 50/60Hz
Wiring:	ON/OFF
Optics:	asymmetric lmax=6°
Indirect Optic:	extra wide flood 110°
Color:	White - 11
Weight:	1.5 kg
Size:	A: 42mm B: 100mm C: 550mm

CE

IP20



Appliance

- Extruded aluminium body.
- Die-cast aluminium caps.
- Polyester powder paint resistant to UV rays.
- Double PMMA screen.

Installation

- Wall mounted.

Note

- These fittings are suitable for the modern control systems. For the various possibilities, please see section "Controlling the light".

Norm

- It complies with standards EN 60598-1 and EN 60598-2-1.

GAP

direct/indirect light



Arcluce Code **0447000A-830-11**
Ex Code **K4710-11 CEI**
Code EAN **8054378198755**



Specifications

Extruded aluminium body. Die-cast aluminium caps. Polyester powder paint resistant to UV rays.

Double PMMA screen.

It complies with standards EN 60598-1 and EN 60598-2-1.

LED sources available in color temperatures 3000K, 3000K

High color consistency < 3 SDCM and LED life time > 60000h - L80 - B20 (Ta 25°C).

System effectiveness, minimum 28lm/W

Luminaire in insulation class I.

DRIVER INCLUDED.

Wall mounted.

These fittings are suitable for the modern control systems. For the various possibilities, please see section "Controlling the light".

Brand ARCLUCE mod. GAP

GAP

direct/indirect light



Arcluce Code **0447001T-11**
 Ex Code **K4712-11 BLE**
 Code EAN **8054378198793**

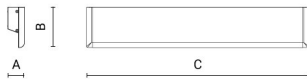


Technical information

Light source:	LED, 11W
Indirect light source:	LED, 11W
Luminaire efficacy:	58lm/W
Luminaire:	25W , 1450lm
LED life time:	> 60000h - L80 - B20 (Ta 25°C)
High colour consistency:	< 3 SDCM
Power supply:	220-240V 50/60Hz
Wiring:	BLE
Optics:	asymmetric lmax=6°
Indirect Optic:	asymmetric 110°
Color:	White - 11
Weight:	1.5 kg
Size:	A: 42mm B: 100mm C: 550mm

CE

IP20



Appliance

- Extruded aluminium body.
- Die-cast aluminium caps.
- Polyester powder paint resistant to UV rays.
- Double PMMA screen.

Installation

- Wall mounted.

Note

- These fittings are suitable for the modern control systems. For the various possibilities, please see section "Controlling the light".

Norm

- It complies with standards EN 60598-1 and EN 60598-2-1.

GAP

direct/indirect light



Arcluce Code **0447001T-11**
Ex Code **K4712-11 BLE**
Code EAN **8054378198793**



Specifications

Extruded aluminium body. Die-cast aluminium caps. Polyester powder paint resistant to UV rays.
Double PMMA screen.

It complies with standards EN 60598-1 and EN 60598-2-1.

LED source in Tunable White version., LED source in Tunable White version.

High color consistency < 3 SDCM and LED life time > 60000h - L80 - B20 (Ta 25°C).

System effectiveness, minimum 58lm/W

Luminaire in insulation class I.

DRIVER INCLUDED.

Wall mounted.

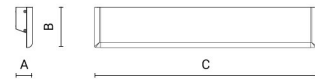
These fittings are suitable for the modern control systems. For the various possibilities, please see section "Controlling the light".

Brand ARCLUCE mod. GAP

GAP

direct/indirect light

Arcluce Code **0447002T-830-11**
Ex Code **K4713-11 BLE**



Technical information

Light source:	LED, 3W, RGBW
Indirect light source:	LED, 3000K, CRI>80, RGBW
Luminaire efficacy:	TBD
Luminaire:	14W, TBD
LED life time:	> 50000h - L80 - B20 (Ta 25°C)
Power supply:	220-240V 50/60Hz
Wiring:	BLE
Optics:	asymmetric lmax=6°
Indirect Optic:	asymmetric 110°
Color:	White - 11
Weight:	1.5 kg
Size:	A: 550mm B: 100mm C: 42mm

CE

IP20



Appliance

- Extruded aluminium body.
- Die-cast aluminium caps.
- Polyester powder paint resistant to UV rays.
- Double PMMA screen.

Installation

- Wall mounted.

Note

- These fittings are suitable for the modern control systems. For the various possibilities, please see section "Controlling the light".

Norm

- It complies with standards EN 60598-1 and EN 60598-2-1.

GAP

direct/indirect light

Arcluce Code **0447002T-830-11**

Ex Code **K4713-11 BLE**



Specifications

Extruded aluminium body. Die-cast aluminium caps. Polyester powder paint resistant to UV rays.

Double PMMA screen.

It complies with standards EN 60598-1 and EN 60598-2-1.

LED source in RGBW version.

System effectiveness, minimum TBD

Luminaire in insulation class I.

DRIVER INCLUDED.

Wall mounted.

These fittings are suitable for the modern control systems. For the various possibilities, please see section "Controlling the light".

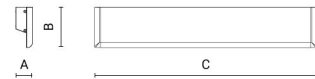
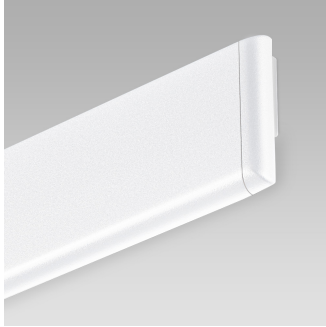
Brand ARCLUCE mod. GAP

GAP

direct/indirect light



Arcluce Code **0447003A-830-11**
 Ex Code **K4720-11 CEI**
 Code EAN **8054378198816**



Technical information

Light source:	LED, 3000K, CRI>80
Indirect light source:	LED, 3000K, CRI>80
Luminaire efficacy:	33lm/W
Luminaire:	24W , 780lm
LED life time:	> 60000h - L80 - B20 (Ta 25°C)
High colour consistency:	< 3 SDCM
Power supply:	220-240V 50/60Hz
Wiring:	ON/OFF
Optics:	asymmetric lmax=6°
Indirect Optic:	extra wide flood 110°
Color:	White - 11
Weight:	3 kg
Size:	A: 42mm B: 100mm C: 1050mm

CE

IP20



Appliance

- Extruded aluminium body.
- Die-cast aluminium caps.
- Polyester powder paint resistant to UV rays.
- Double PMMA screen.

Installation

- Wall mounted.

Note

- These fittings are suitable for the modern control systems. For the various possibilities, please see section "Controlling the light".

Norm

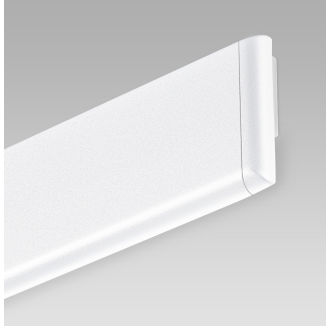
- It complies with standards EN 60598-1 and EN 60598-2-1.

GAP

direct/indirect light



Arcluce Code **0447003A-830-11**
Ex Code **K4720-11 CEI**
Code EAN **8054378198816**



Specifications

Extruded aluminium body. Die-cast aluminium caps. Polyester powder paint resistant to UV rays.

Double PMMA screen.

It complies with standards EN 60598-1 and EN 60598-2-1.

LED sources available in color temperatures 3000K, 3000K

High color consistency < 3 SDCM and LED life time > 60000h - L80 - B20 (Ta 25°C).

System effectiveness, minimum 33lm/W

Luminaire in insulation class I.

DRIVER INCLUDED.

Wall mounted.

These fittings are suitable for the modern control systems. For the various possibilities, please see section "Controlling the light".

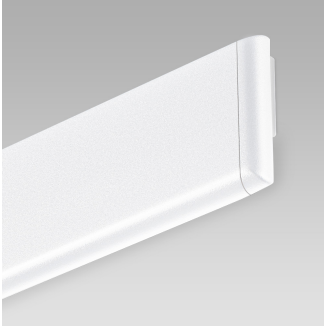
Brand ARCLUCE mod. GAP

GAP

direct/indirect light



Arcluce Code **0447004T-11**
 Ex Code **K4722-11 BLE**
 Code EAN **8054378198854**

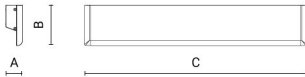


Technical information

Light source:	LED, 22W
Indirect light source:	LED, 22W
Luminaire efficacy:	60lm/W
Luminaire:	48W , 2900lm
LED life time:	> 60000h - L80 - B20 (Ta 25°C)
High colour consistency:	< 3 SDCM
Power supply:	220-240V 50/60Hz
Wiring:	BLE
Optics:	asymmetric lmax=6°
Indirect Optic:	asymmetric 110°
Color:	White - 11
Weight:	3 kg
Size:	A: 42mm B: 100mm C: 1050mm

CE

IP20



Appliance

- Extruded aluminium body.
- Die-cast aluminium caps.
- Polyester powder paint resistant to UV rays.
- Double PMMA screen.

Installation

- Wall mounted.

Note

- These fittings are suitable for the modern control systems. For the various possibilities, please see section "Controlling the light".

Norm

- It complies with standards EN 60598-1 and EN 60598-2-1.

GAP

direct/indirect light



Arcluce Code **0447004T-11**
Ex Code **K4722-11 BLE**
Code EAN **8054378198854**



Specifications

Extruded aluminium body. Die-cast aluminium caps. Polyester powder paint resistant to UV rays.
Double PMMA screen.

It complies with standards EN 60598-1 and EN 60598-2-1.

LED source in Tunable White version., LED source in Tunable White version.

High color consistency < 3 SDCM and LED life time > 60000h - L80 - B20 (Ta 25°C).

System effectiveness, minimum 60lm/W

Luminaire in insulation class I.

DRIVER INCLUDED.

Wall mounted.

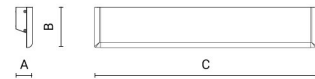
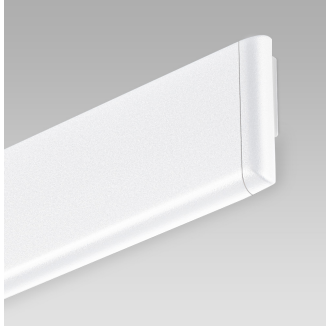
These fittings are suitable for the modern control systems. For the various possibilities, please see section "Controlling the light".

Brand ARCLUCE mod. GAP

GAP

direct/indirect light

Arcluce Code **0447005T-830-11**
Ex Code **K4723-11 BLE**



Technical information

Light source:	LED, 6W, RGBW
Indirect light source:	LED, 3000K, CRI>80, RGBW
Luminaire efficacy:	TBD
Luminaire:	28W , TBD
LED life time:	> 50000h - L80 - B20 (Ta 25°C)
Power supply:	220-240V 50/60Hz
Wiring:	BLE
Optics:	asymmetric lmax=6°
Indirect Optic:	asymmetric 110°
Color:	White - 11
Weight:	3 kg
Size:	A: 1050mm B: 100mm C: 42mm

CE

IP20



Appliance

- Extruded aluminium body.
- Die-cast aluminium caps.
- Polyester powder paint resistant to UV rays.
- Double PMMA screen.

Installation

- Wall mounted.

Note

- These fittings are suitable for the modern control systems. For the various possibilities, please see section "Controlling the light".

Norm

- It complies with standards EN 60598-1 and EN 60598-2-1.

GAP

direct/indirect light

Arcluce Code **0447005T-830-11**

Ex Code **K4723-11 BLE**



Specifications

Extruded aluminium body. Die-cast aluminium caps. Polyester powder paint resistant to UV rays.

Double PMMA screen.

It complies with standards EN 60598-1 and EN 60598-2-1.

LED source in RGBW version.

System effectiveness, minimum TBD

Luminaire in insulation class I.

DRIVER INCLUDED.

Wall mounted.

These fittings are suitable for the modern control systems. For the various possibilities, please see section "Controlling the light".

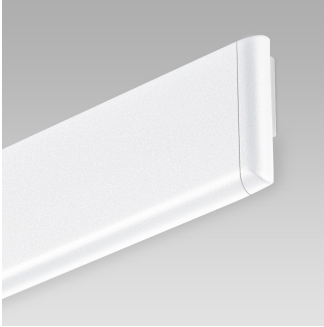
Brand ARCLUCE mod. GAP

GAP

direct/indirect light



Arcluce Code **0447006A-830-11**
 Ex Code **K4730-11 CEI**
 Code EAN **8054378198878**

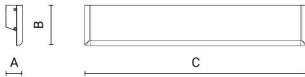


Technical information

Light source:	LED, 3000K, CRI>80
Indirect light source:	LED, 3000K, CRI>80
Luminaire efficacy:	34lm/W
Luminaire:	34W , 1170lm
LED life time:	> 60000h - L80 - B20 (Ta 25°C)
High colour consistency:	< 3 SDCM
Power supply:	220-240V 50/60Hz
Wiring:	ON/OFF
Optics:	asymmetric lmax=6°
Indirect Optic:	extra wide flood 110°
Color:	White - 11
Weight:	4.5 kg
Size:	A: 42mm B: 100mm C: 1550mm

CE

IP20



Appliance

- Extruded aluminium body.
- Die-cast aluminium caps.
- Polyester powder paint resistant to UV rays.
- Double PMMA screen.

Installation

- Wall mounted.

Note

- These fittings are suitable for the modern control systems. For the various possibilities, please see section "Controlling the light".

Norm

- It complies with standards EN 60598-1 and EN 60598-2-1.

GAP

direct/indirect light



Arcluce Code **0447006A-830-11**
Ex Code **K4730-11 CEI**
Code EAN **8054378198878**



Specifications

Extruded aluminium body. Die-cast aluminium caps. Polyester powder paint resistant to UV rays.
Double PMMA screen.

It complies with standards EN 60598-1 and EN 60598-2-1.

LED sources available in color temperatures 3000K, 3000K

High color consistency < 3 SDCM and LED life time > 60000h - L80 - B20 (Ta 25°C).

System effectiveness, minimum 34lm/W

Luminaire in insulation class I.

DRIVER INCLUDED.

Wall mounted.

These fittings are suitable for the modern control systems. For the various possibilities, please see section "Controlling the light".

Brand ARCLUCE mod. GAP

GAP

direct/indirect light



Arcluce Code **0447007T-11**
 Ex Code **K4732-11 BLE**
 Code EAN **8054378198915**

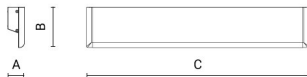


Technical information

Light source:	LED, 33W
Indirect light source:	LED, 33W
Luminaire efficacy:	62lm/W
Luminaire:	70W , 4350lm
LED life time:	> 60000h - L80 - B20 (Ta 25°C)
High colour consistency:	< 3 SDCM
Power supply:	220-240V 50/60Hz
Wiring:	BLE
Optics:	asymmetric lmax=6°
Indirect Optic:	asymmetric 110°
Color:	White - 11
Weight:	4.5 kg
Size:	A: 42mm B: 100mm C: 1550mm

CE

IP20



Appliance

- Extruded aluminium body.
- Die-cast aluminium caps.
- Polyester powder paint resistant to UV rays.
- Double PMMA screen.

Installation

- Wall mounted.

Note

- These fittings are suitable for the modern control systems. For the various possibilities, please see section "Controlling the light".

Norm

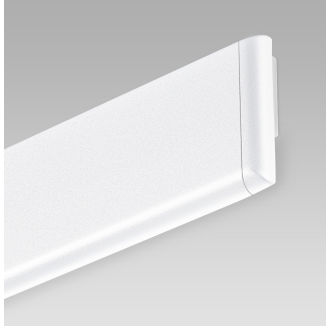
- It complies with standards EN 60598-1 and EN 60598-2-1.

GAP

direct/indirect light



Arcluce Code **0447007T-11**
Ex Code **K4732-11 BLE**
Code EAN **8054378198915**



Specifications

Extruded aluminium body. Die-cast aluminium caps. Polyester powder paint resistant to UV rays.
Double PMMA screen.

It complies with standards EN 60598-1 and EN 60598-2-1.

LED source in Tunable White version., LED source in Tunable White version.

High color consistency < 3 SDCM and LED life time > 60000h - L80 - B20 (Ta 25°C).

System effectiveness, minimum 62lm/W

Luminaire in insulation class I.

DRIVER INCLUDED.

Wall mounted.

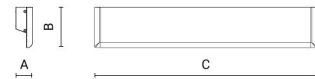
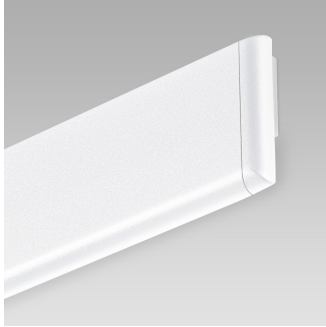
These fittings are suitable for the modern control systems. For the various possibilities, please see section "Controlling the light".

Brand ARCLUCE mod. GAP

GAP

direct/indirect light

Arcluce Code **0447008T-830-11**
Ex Code **K4733-11 BLE**



Technical information

Light source:	LED, 9W, RGBW
Indirect light source:	LED, 27W, RGBW
Luminaire efficacy:	TBD
Luminaire:	40W, TBD
LED life time:	> 50000h - L80 - B20 (Ta 25°C)
Power supply:	220-240V 50/60Hz
Wiring:	BLE
Optics:	asymmetric lmax=6°
Indirect Optic:	asymmetric 110°
Color:	White - 11
Weight:	3 kg
Size:	A: 1550mm B: 100mm C: 42mm

CE

IP20



Appliance

- Extruded aluminium body.
- Die-cast aluminium caps.
- Polyester powder paint resistant to UV rays.
- Double PMMA screen.

Installation

- Wall mounted.

Note

- These fittings are suitable for the modern control systems. For the various possibilities, please see section "Controlling the light".

Norm

- It complies with standards EN 60598-1 and EN 60598-2-1.

GAP

direct/indirect light

Arcluce Code **0447008T-830-11**

Ex Code **K4733-11 BLE**



Specifications

Extruded aluminium body. Die-cast aluminium caps. Polyester powder paint resistant to UV rays.

Double PMMA screen.

It complies with standards EN 60598-1 and EN 60598-2-1.

LED source in RGBW version., LED source in RGBW version.

System effectiveness, minimum TBD

Luminaire in insulation class I.

DRIVER INCLUDED.

Wall mounted.

These fittings are suitable for the modern control systems. For the various possibilities, please see section "Controlling the light".

Brand ARCLUCE mod. GAP